

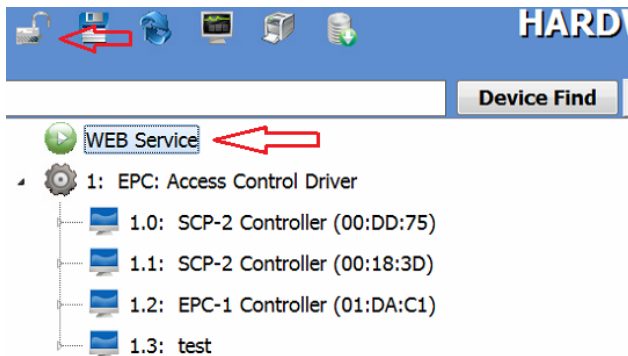
# VIDEOINSIGHT

## Prerequisites

1. A new or existing installation of MonitorCast version 9.1.49 or higher that is currently configured and operational either locally with Video Insight or on another machine.
2. Video insight IP Server 5.5.16.x or higher that is configured and operational.
3. Port number (x) added to the firewall and open between both systems. The port number will vary depending on which port is used during the configuration.


## Configuration - MonitorCast

1. First, let's configure the Web Driver within MonitorCast. The Web Driver contains specific fields that need to be set to allow the Video Insight software to communicate with the MonitorCast software. Below is a screen shot of these fields and what they're used for.




Properties	
Website Port	8080
Website Description	MonitorCast Website
Service UserName	Monitor Cast
Service Password	
Auto Start Web Server	<input type="checkbox"/> False
Windows Services Manager	(Click here for more options) ▾
Website	(Click Here to Connect) ▾
Website Timer	15
SDK Allowed IP Client(s)	10.10.3.25
SDK TCP Port	85

# VIDEOINSIGHT

1. Navigate to the Hardware manager and click on the padlock icon  in the upper left hand corner above the Web Service icon. This allows you to edit the properties of the device selected in the hardware tree.

2. Highlight the Web Service driver to display the properties of the driver.

- **Website Port** - This is the port used to browse to the MonitorCast web client. You can change this port to anything else other than 80 unless you're using a different port for the Video Insight Web Client.
- **Service UserName** - Enter the Windows administrative username so that the service has sufficient rights and privileges.
- **Service Password** - Provide the correct password the administrative user you provided above.
- **SDK Allowed IP Client(s)** - Enter the IP address of the IP Server that is going to be integrated with the MonitorCast software.
- **SDK TCP Port** - Select a port that is available and assign it to this field. This port will need to be opened between both systems in order for the IP Server to connect.

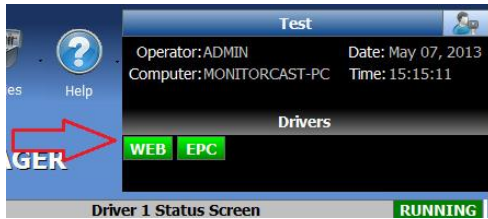
3. Once the information has been entered, click the Floppy Disk Save icon  to save the settings.

4. When everything is configured, right-click on the WEB Service driver and navigate to Driver Commands > Start Driver.



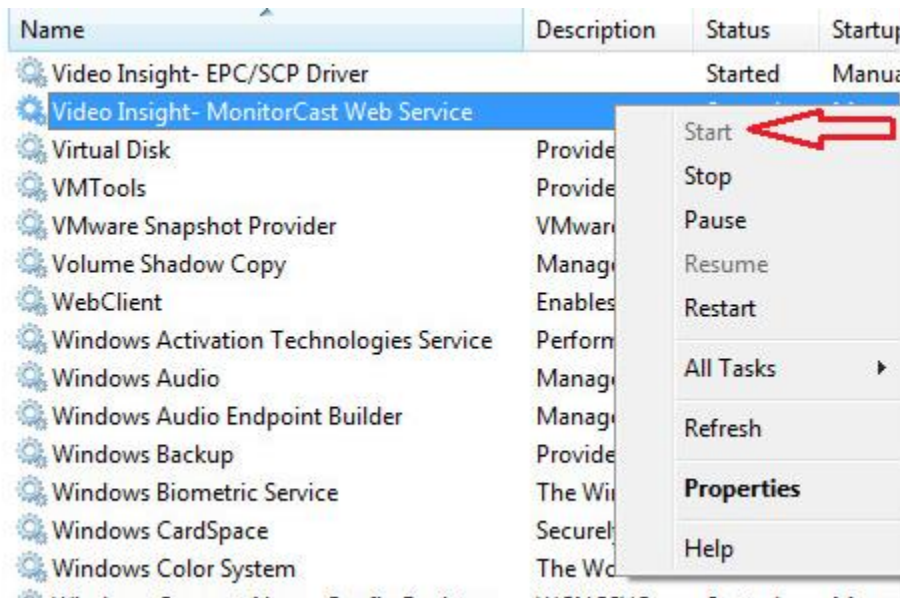
# VIDEOINSIGHT

4. If the login information is added correctly, the driver should start and there should be a green WEB icon in the information window in the upper right hand corner of the software as seen below.



## **\*\* NOTE\*\***

In the event that the server is not starting properly, navigate to the service manager and manually start the driver. To access the Services, click Start and type "Services.msc" in the Search or Run command. Find the service named "Video Insight- MonitorCast Web Service" and right-click on the service and select Start from the menu.

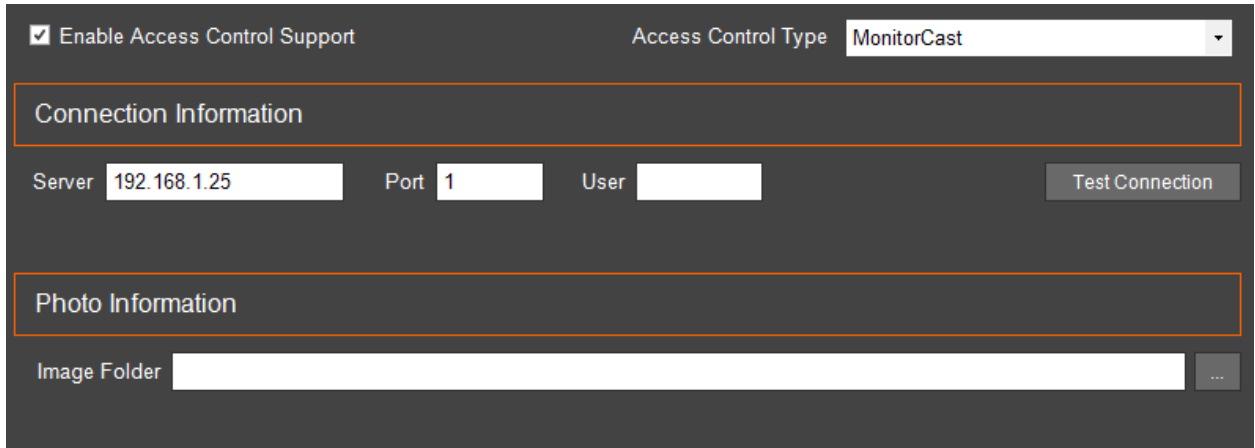


# VIDEOINSIGHT

## Configuration – Video Insight Integration

The access control portion will need to be configured on the Video Insight application. Open the Monitor Station and Administration > Servers and Access Configuration.

From VI Monitor, enable the Access Control Support checkbox and select MonitorCast from the Access Control Type.



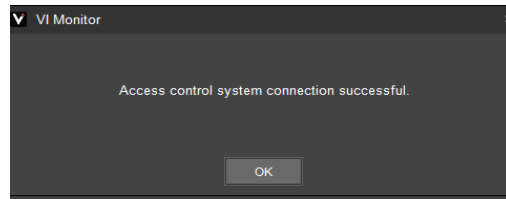
The screenshot shows a configuration window with a dark background. At the top, there is a checkbox labeled "Enable Access Control Support" which is checked. To its right is a dropdown menu labeled "Access Control Type" with "MonitorCast" selected. Below this is a section titled "Connection Information" enclosed in an orange border. It contains three input fields: "Server" with the value "192.168.1.25", "Port" with the value "1", and "User" which is empty. A "Test Connection" button is located to the right of the "User" field. Below the "Connection Information" section is another section titled "Photo Information" also enclosed in an orange border. It contains an "Image Folder" input field which is empty, followed by a button with three dots.

1. Enter the following information into the Connection Information Field:

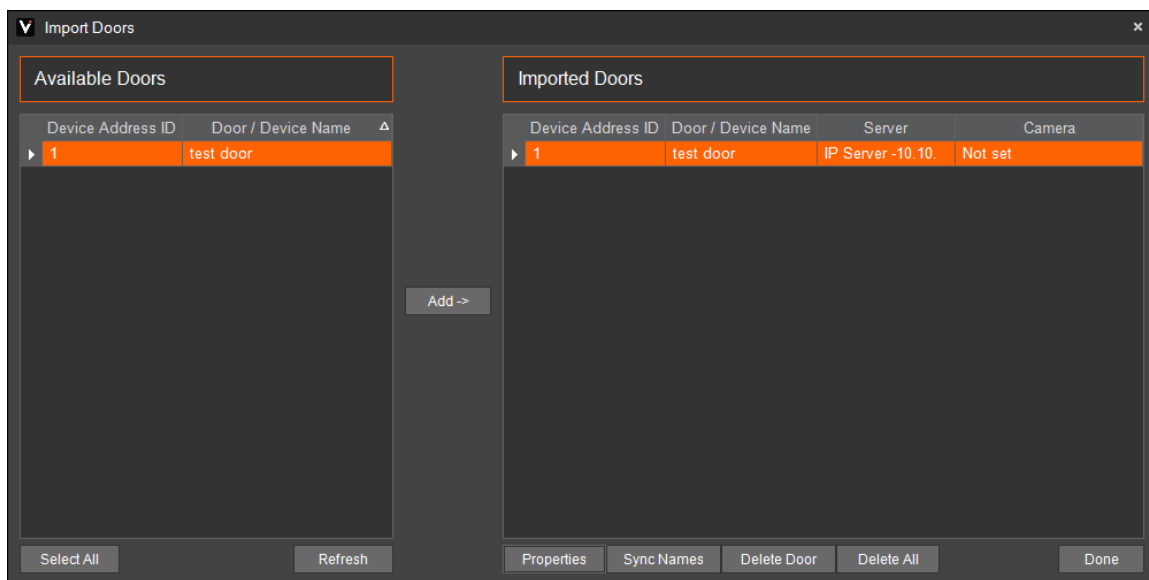
- **Server IP** - Enter the IP address of the MonitorCast server. If the systems are on the same machine, enter the ip address of the system and not the home address.
- **Port** - This is the SDK port that was assigned in the MonitorCast software, enter that here.
- **User Name** - Type in the Operator name of the Admin users of MonitorCast. By default this is set to Admin.
- **Image Folder** – Leave Blank, this section is not used.

2. Click Test Connection to confirm the integration is working. A dialog box will appear stating: Access Control System Connection Successful.

# VIDEOINSIGHT

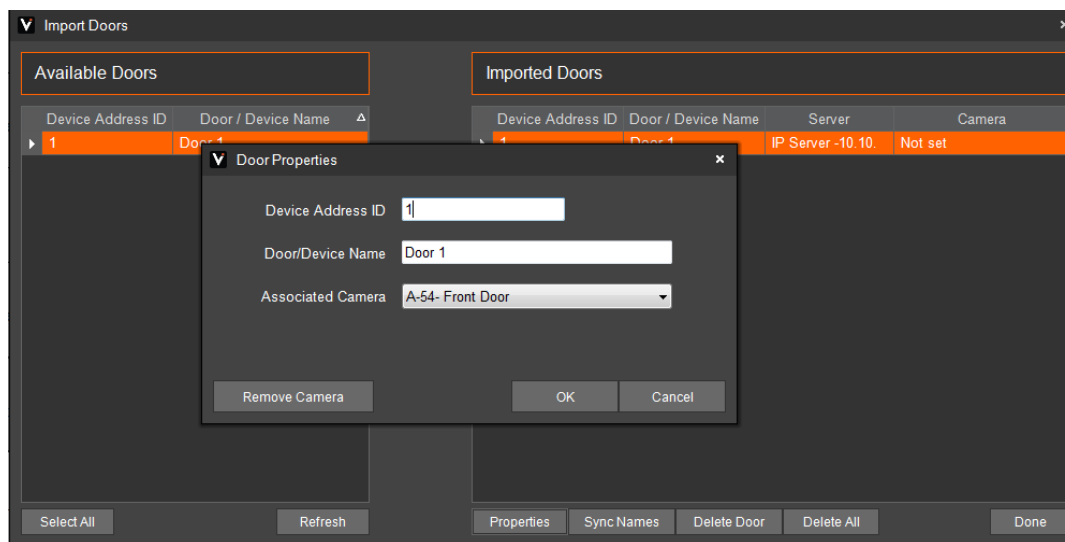


3. Click on "Import Doors" to display the list of doors in the Infinias system.
4. Select the desired doors to add to VI Monitor by selecting a door and clicking the Add-> button.



5. The doors will not be imported or configured completely unless a camera is associated with a door. Select a door and click Properties to associate a Camera. Click OK.

# VIDEOINSIGHT



The installation is now complete.