

Panasonic

AMAG Symmetry

Installation and Setup Guide

Copyright 2018 –Panasonic System Solutions Company of North America

[Subject]

Last updated: 8.13.2018

TABLE OF CONTENTS

- 1. PREREQUISITES..... 2
- 2. INSTALLATION AND SETUP INSTRUCTIONS 2
- 3. VMS MOTION ALARM SETUP AND CONFIGURATION 5

1. PREREQUISITES

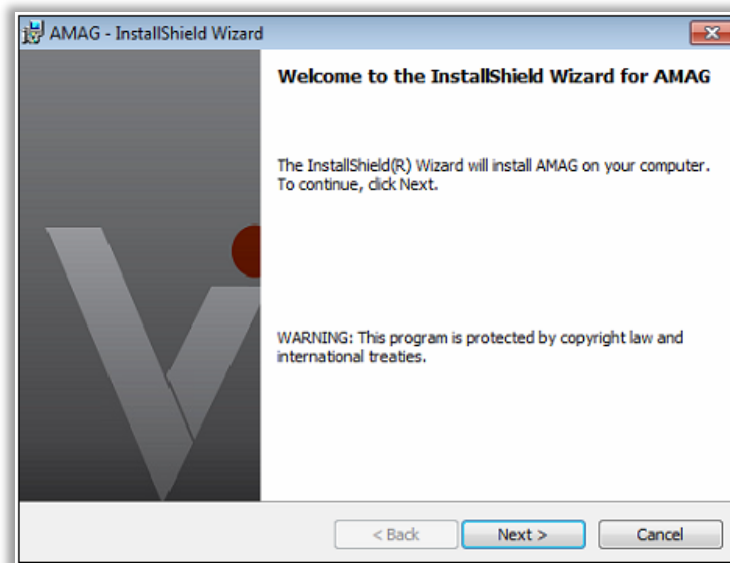
- VI IP Server 7.2.2.26 +
- AMAG Symmetry 9.0.02000.52701 +
- AMAG Integration Installer from www.downloadvi.com
- Port 2055 must be open to receive motion alarms from the VMS

2. INSTALLATION AND SETUP INSTRUCTIONS

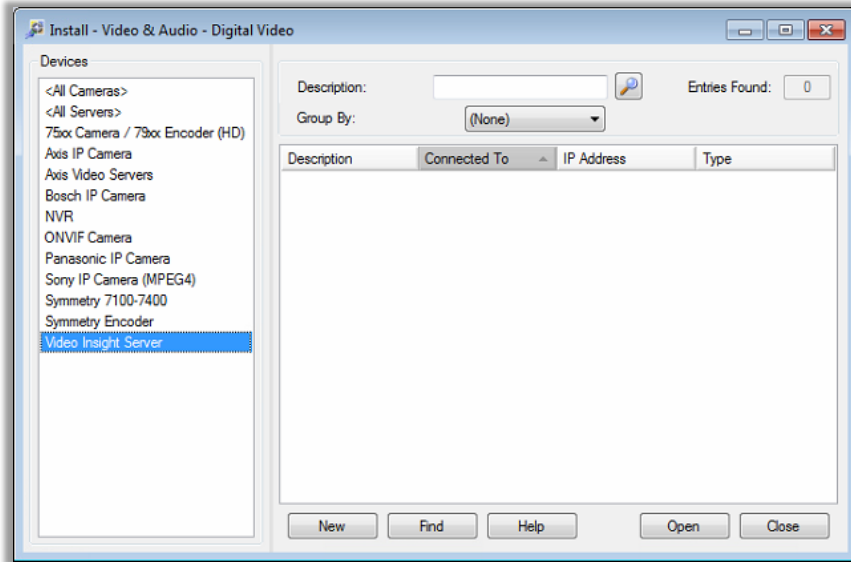
- 1| Download the **AMAG_Integration** installer on to the Symmetry server under the 3rd Party Integration page from www.downloadvi.com

Third Party Integrations ⓘ	
Company	Integration Version
AMAG	9.0.02000.52701 +

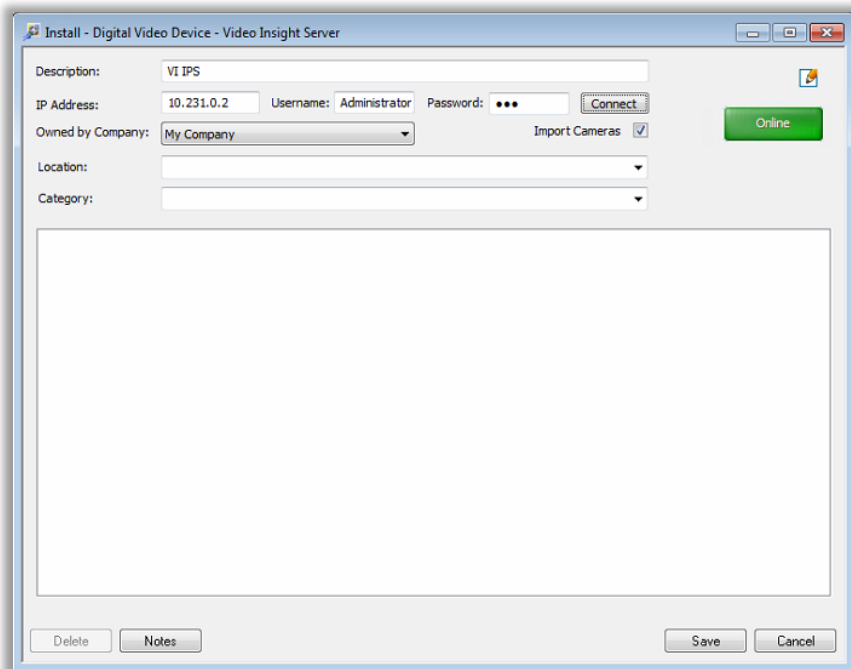
- 2| Run the **AMG_Integration.exe** to begin the integration install process. Click Next, **Agree** to the License Agreement and click Install.



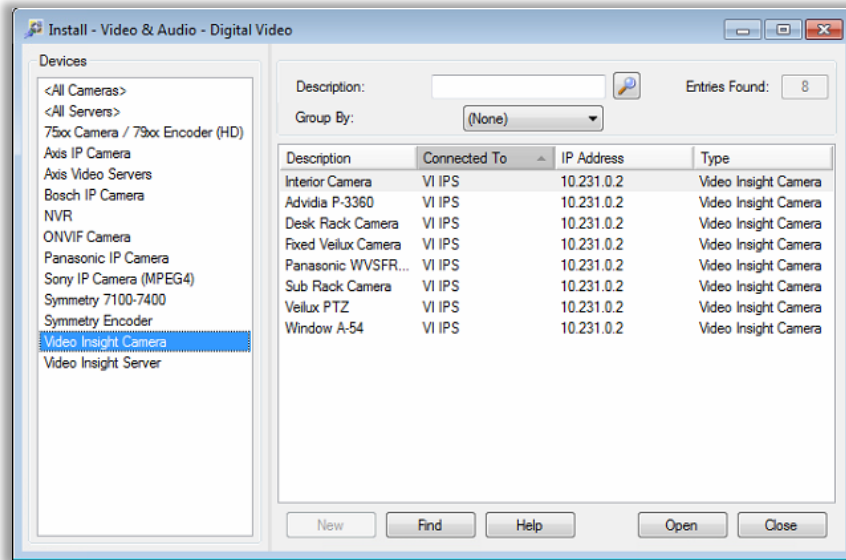
- 3| After the installer has completed, “Video Insight Server” will now be available within the Symmetry software.
To Configure, open the **Symmetry** software and Navigate to Install Digital Video, Select **Video Insight Server** and click **Open**.



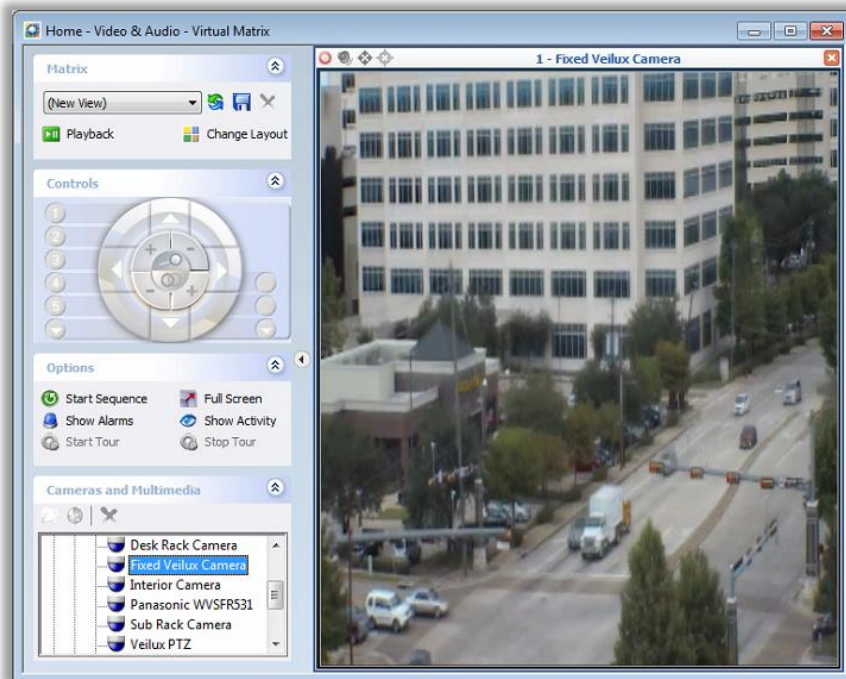
- 4| Enter a **Description** for the VMS, the **IP Address**, **Username** and **Password** for the IP Server. To import the cameras, check the **Import Cameras** box and click **Connect**.
If the server is found, the icon will turn green and show “**Online**”, otherwise it will be red and display “**Offline**”.
If the server shows “**Online**”, be sure to click the **Save** button.



- 5| To ensure the cameras imported properly, from the Digital Video Install screen, select **Video Insight Camera**, which should display a list of the cameras imported from the VMS



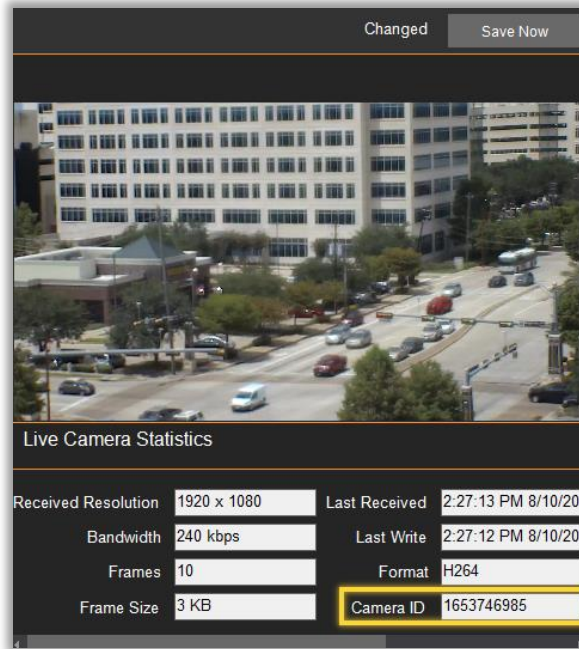
- 6| To test live video, click on **Home** from the Symmetry software and then **Virtual Matrix**. In this window, double-click on a camera from the left tree which will display the live video in the first available cell within the Virtual Matrix.



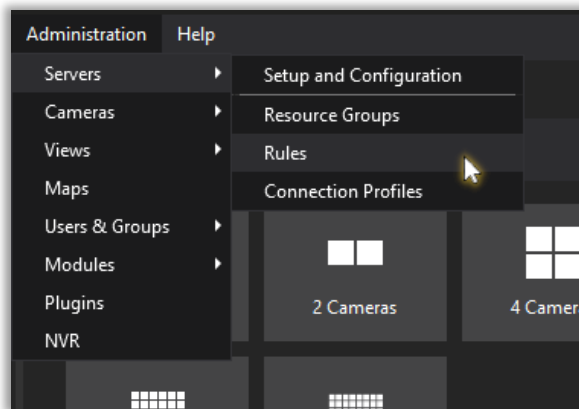
3.VMS MOTION ALARM SETUP AND CONFIGURATION

To receive motion alarms in the Symmetry software from the VMS, a rule needs to be setup for each camera within the VI IPS, which can be done by following the steps below.

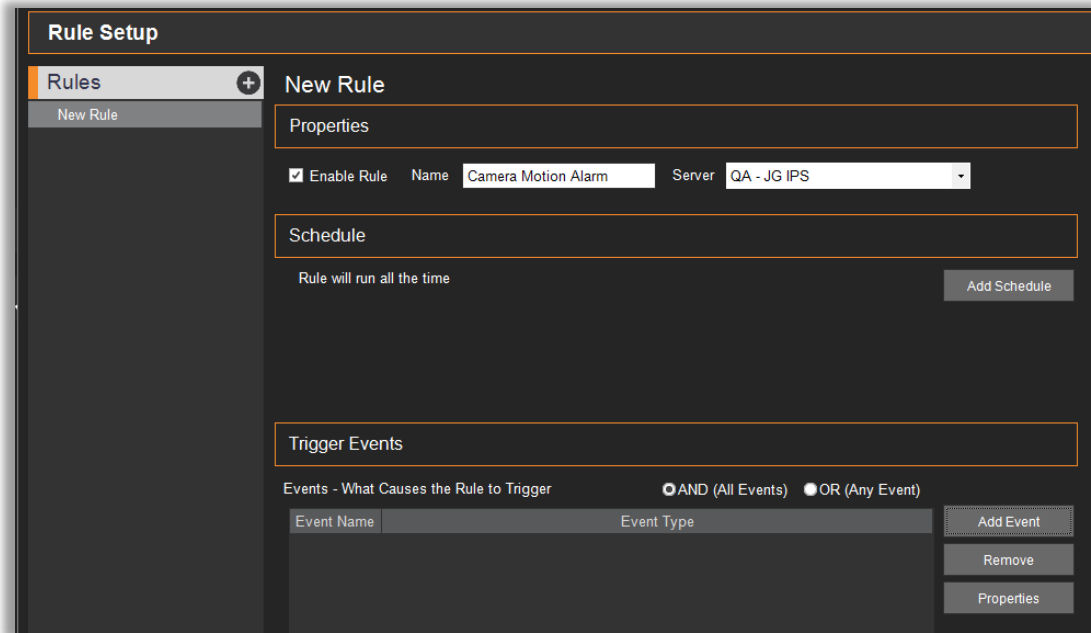
- 1| Before setting up a rule, the **Camera ID** must be specified. For this, **right-click** on a camera, select **Properties** and copy or write down the Camera ID field value on the right side, under the live feed.



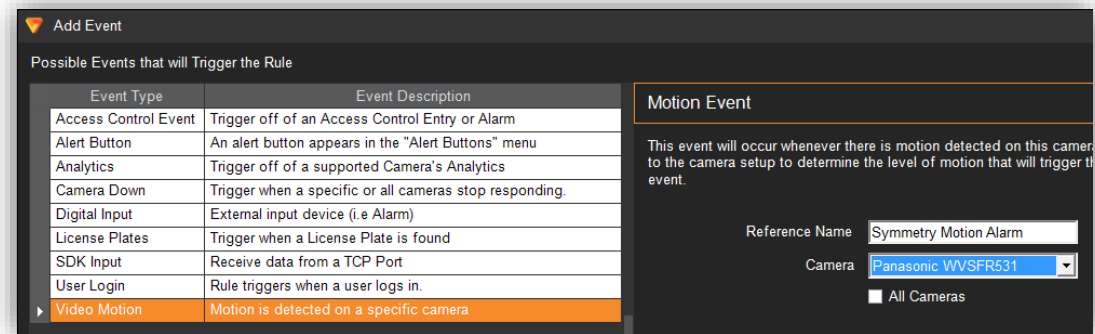
- 2| After the Camera ID has been found, open the **Rules** manager by navigating to **Administration**, **Servers** and then **Rules**.



- 3| In the Rule Setup page, click the + sign next to **Rules** to add a new rule. Provide a name for the rule and click on **Add Event**.



- 4| Select **Video Motion** as the Event, add a **Reference Name** and select the desired camera.



- 5] After adding the Event, click on **Add Action** below the **Trigger Events** section. From the **Add Action** window, select **TCP Message**. Enter a Name (*not required*); IP Address will be the IP address of the **Symmetry software**; the Port must be **2055** and the Message body will be the **Camera ID** which was retrieved previously from the Camera Properties section (*see Step 1 above*). After this information has been entered, click **OK** and **Save Now**.

