

VIDEOINSIGHT

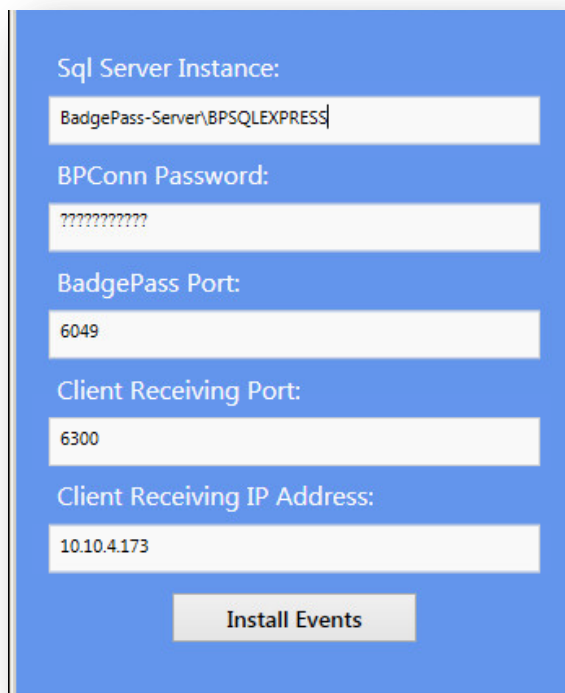
BadgePass Integration – Integration Guide

Prerequisites

1. BadgePass Version 4.0.2
2. [BadgePass Event Loader and VI Access Control Plugin Installer](#) on the Video Insight Server and Video Insight IP Server 5.5.34.5 – 6.0.12.7 or later
3. Ports 6049 and 6300 open between BadgePass and Video Insight

BadgePass Setup and Configuration

1. Download the Video Insight Plugin Installer and the BadgePass event loader in Step 2 of the prerequisites above.
2. Run the BadgePass event loader from the BadgePass system. This needs to be done so that the events can be created within BadgePass and associate them with the IP address of the Video Insight server. This allows the IP Server can receive events from BadgePass.
3. Define the following information to configure the Event Loader:



Sql Server Instance:
BadgePass-Server\BPSQLEXPRESS

BPCConn Password:
??????????

BadgePass Port:
6049

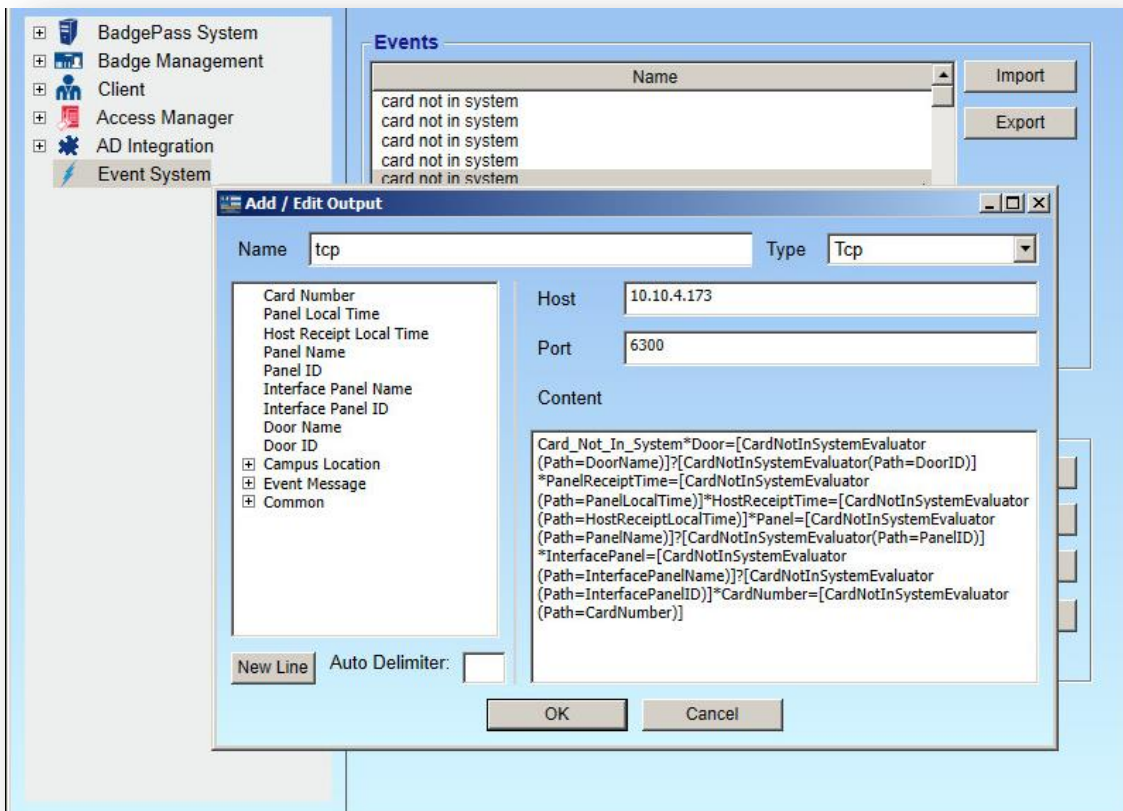
Client Receiving Port:
6300

Client Receiving IP Address:
10.10.4.173

Install Events

VIDEOINSIGHT

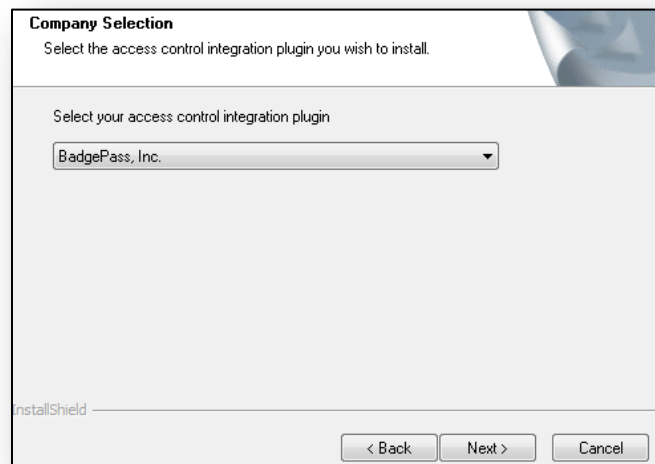
- a) SQL Server Instance – This is the instance name of the BadgePass SQL database. If BadgePass has installed a bootstrapped instance of sql, it's named "computername\BPSQLEXPRESS". If the instance is a default (non-named) instance, then it would be either the computer name or (local). If it's a SQL Express instance, it's often named "computername\sqlexpress"
 - b) BPConn Password – The password given to the BPConn user when the BadgePass System was validated.
 - c) BadgePass Port – The port that BadgePass portion of the VI integration opens up to accept requests.
 - d) Client Receiving Port – The port that the client portion (part hosted by VI) opens up to accept event messages from the BadgePass server.
4. Click Install Events to save.
 5. To ensure the events were loaded within the BadgePass system, the event TCP information can be checked within the Management Console > Event System section. Highlight an event and click "Edit" on the TCP settings of an event to see the IP address associated with it. When viewing the TCP properties, the Host field will display which IP address is being used for that particular event.



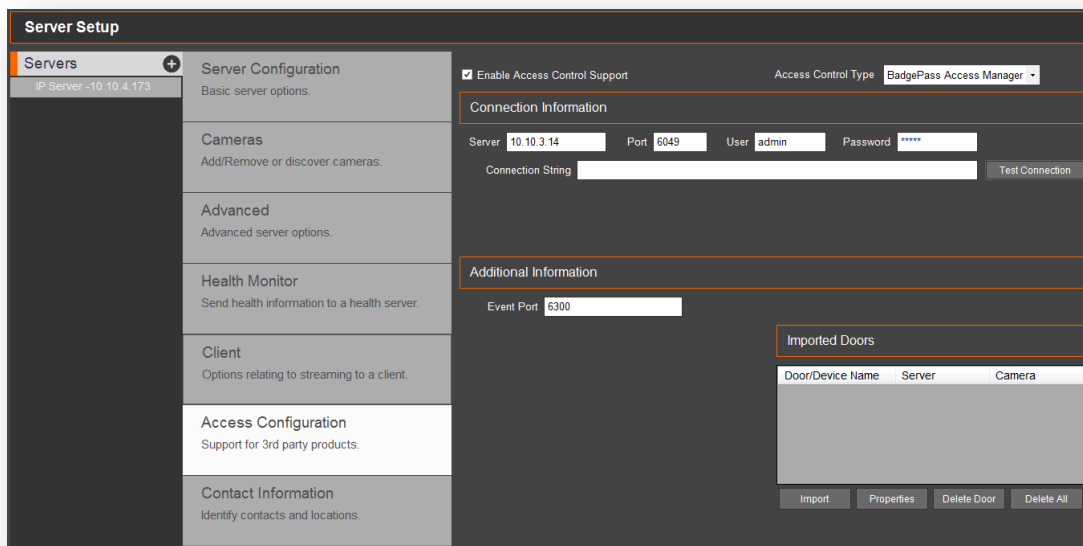
VIDEOINSIGHT

Integration Setup and Configuration within Video Insight

1. Run the Video Insight Plugin installer and select BadgePass from the drop down. Once the installer is complete, make sure to restart VI Monitor/Monitor Station and the IP Service.



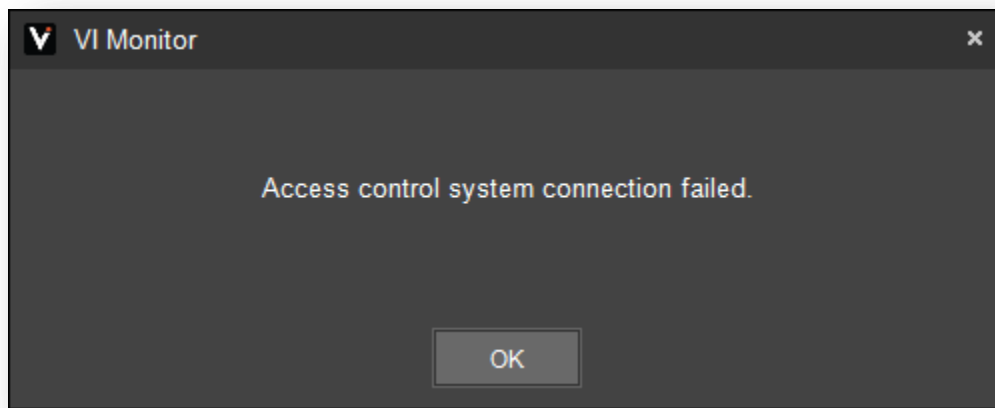
2. Launch VI Monitor and navigate to Administration > Servers > Access Configuration.
3. From VI Monitor, enable the Access Control Support checkbox and select Badge Pass Access Manager.
4. Enter the following information into the Connection Information Fields.



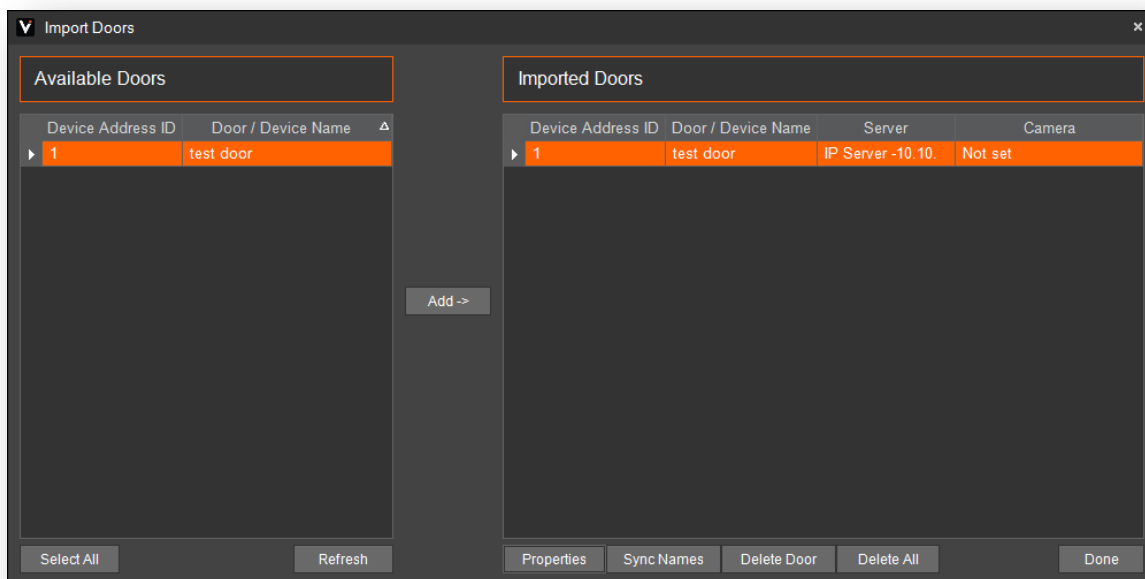
- a. Server – Server IP address of the BadgePass System

VIDEOINSIGHT

- b. Port – Server port is 6049 (as specified with the event loader)
 - c. User – BadgePass Management Studio user name
 - d. Password – BadgePass Management Studio password
 - e. Connection String – Not used
 - f. Event Port – Event port is 6300 (as specified with the event loader)
5. Click Test Connection to confirm the integration is working. A dialog box will appear stating:
Access Control System Connection Successful



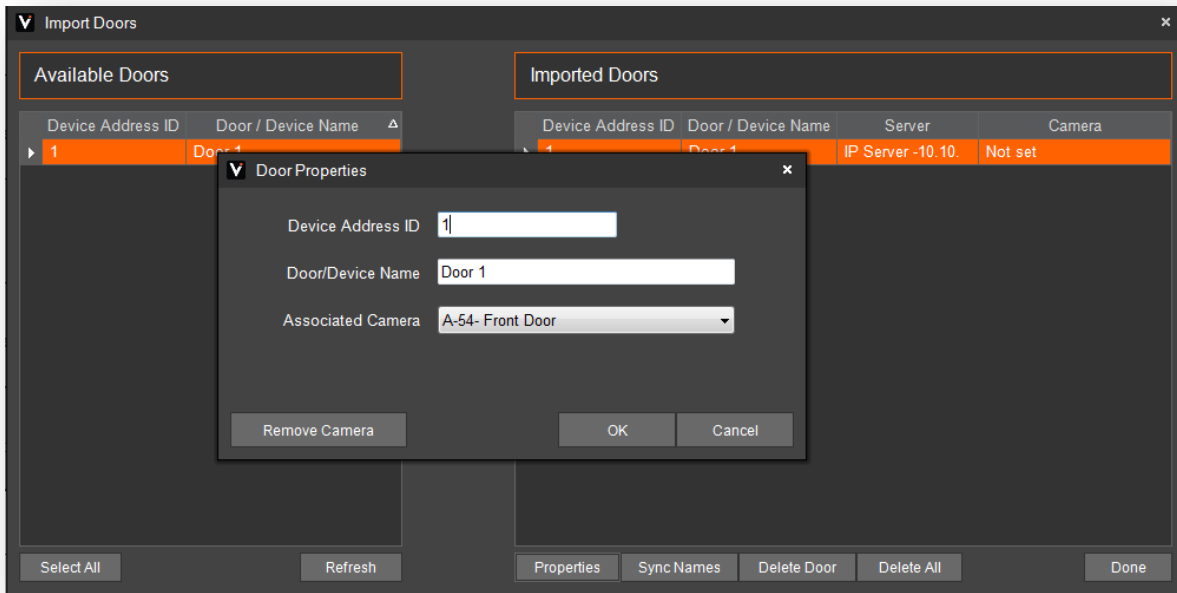
6. Click on "Import Doors" to display the list of doors in the BadgePass system.
7. Select the desired doors to add to VI Monitor by selecting a door and clicking the Add-> button.



8. The doors will not be imported or configured completely unless a camera is associated with a

VIDEOINSIGHT

door. Select a door and click Properties to associate a camera. Click OK.



The installation is completed.