

# VIDEOINSIGHT

## Blackboard Integration – Integration Guide

### Prerequisites

1. Installation of Oracle 12c
2. Video Insight IP Server 5.5.34.5 or later
3. Transact Version 3.11.1.0 (Version certified and tested)
4. Port 1521 open between Video Insight and Blackboard
5. Secondary hard drive installed locally

### Oracle Installation Setup and Configuration

1. Download a copy of Oracle 12c from the Video Insight Download Page located at [www.downloadvi.com](http://www.downloadvi.com).
2. Once downloaded, run the installer and click Next and when prompted to select a product to install. Install “Oracle Data Access Components for Oracle Client 12.1.0.1.0 as shown below.



# VIDEOINSIGHT

- Use the default settings for the Install Location however be sure to install to a secondary HDD, not the local C: drive. In the example below, the installation is going to Drive F:.

**ORACLE DATABASE 12<sup>c</sup>**

### Install Location

Specify a base location for storing all Oracle software and configuration-related files. This location is the Oracle Base directory. Create one Oracle Base for each operating system user. By default, software and configuration files are installed by version and database name in the Oracle Base directory

Oracle Base:

### Software Location

Specify a base location for storing Oracle software files separate from database configuration files in the Oracle Base directory. This software directory is the Oracle Home directory. Change the defaults below either to specify an alternative location, or to select an existing Oracle Home

Name:

Path:

- Accept all defaults on Available Product Components. Do not change anything on this screen.

**ORACLE DATABASE 12<sup>c</sup>**

### Available Product Components

#### Oracle Data Access Components for Oracle Client

The following are components that you can install as part of Oracle Data Access Components for Oracle Client. Which of these components do you want to install?

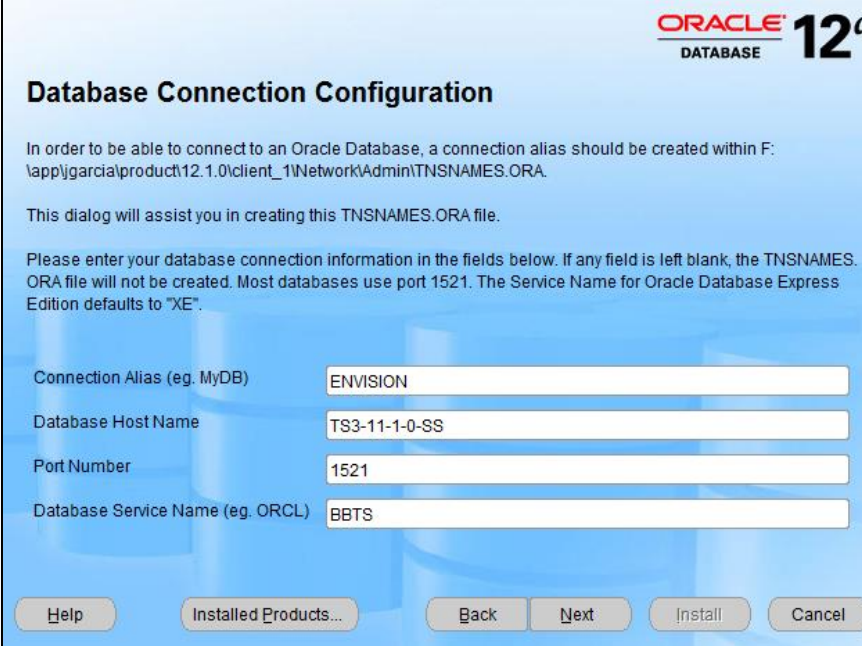
Components	Install Status
<input type="checkbox"/> Optional Dependencies	
<input checked="" type="checkbox"/> Oracle Data Provider for .NET 12.1.0.1.0	New Install
<input checked="" type="checkbox"/> Oracle Providers for ASP.NET 12.1.0.1.0	New Install
<input checked="" type="checkbox"/> Oracle Provider for OLE DB 12.1.0.1.0	New Install
<input checked="" type="checkbox"/> Oracle Services For Microsoft Transaction Server 12.1.0.1.0	New Install
<input type="checkbox"/> Oracle Data Access Components Samples 12.1.0.1.0	Not Installed
<input checked="" type="checkbox"/> Oracle Data Access Components Documentation for Visual Studi...	New Install
<input type="checkbox"/> Oracle Client Dependency (Choose at least one)	

Show all components, including required dependencies.

# VIDEOINSIGHT

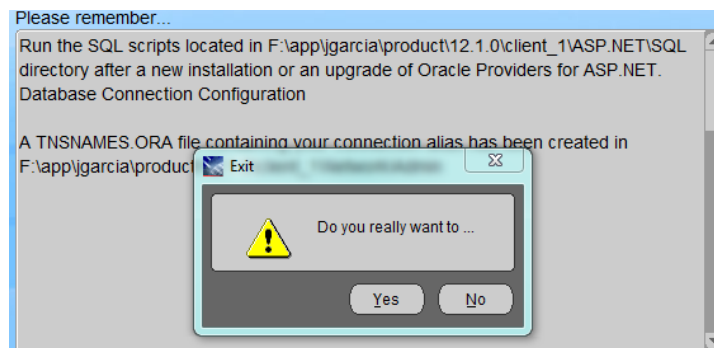
5. The next window will display the database connection information that will provide information for the data connection string within Video Insight.
  - a. **Connection Alias** – Connection name that will be used to communicate with Blackboard.
  - b. **Data Host Name** – Host Name of the Transact System.
  - c. **Port Number** – Communication port between Transact and Video Insight.
  - d. **Database Service Name** – Database Name.

Click Install.



The screenshot shows the 'Database Connection Configuration' dialog box for Oracle Database 12c. The title bar includes the Oracle logo and '12c DATABASE'. The main heading is 'Database Connection Configuration'. Below the heading, there is explanatory text: 'In order to be able to connect to an Oracle Database, a connection alias should be created within F:\app\jgarcia\product\12.1.0\client\_1\Network\Admin\TNSNAMES.ORA. This dialog will assist you in creating this TNSNAMES.ORA file. Please enter your database connection information in the fields below. If any field is left blank, the TNSNAMES.ORA file will not be created. Most databases use port 1521. The Service Name for Oracle Database Express Edition defaults to "XE".' Below this text are four input fields: 'Connection Alias (eg. MyDB)' with the value 'ENVISION', 'Database Host Name' with 'TS3-11-1-0-SS', 'Port Number' with '1521', and 'Database Service Name (eg. ORCL)' with 'BBTS'. At the bottom, there are buttons for 'Help', 'Installed Products...', 'Back', 'Next', 'Install', and 'Cancel'.

6. Once the installation is complete, click Exit and click Yes when asked if you want to quit.

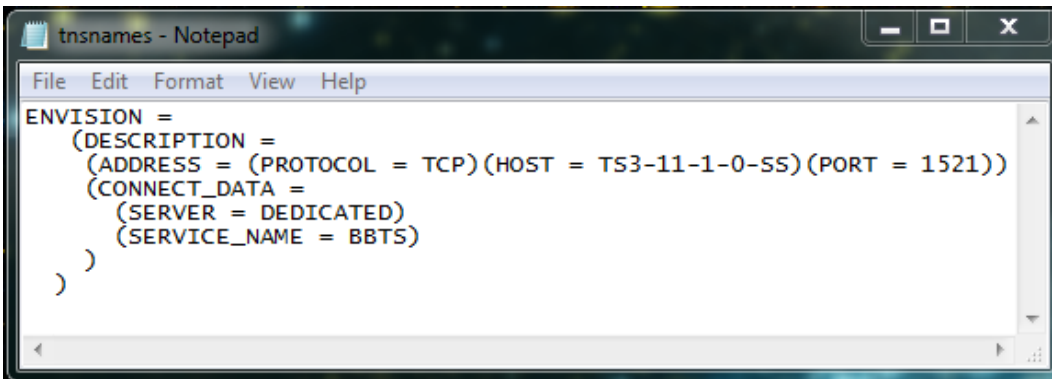
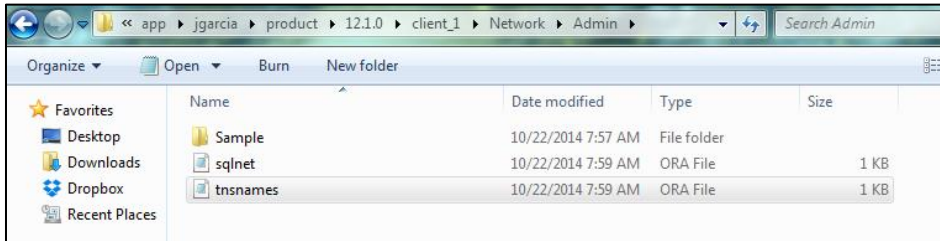


# VIDEOINSIGHT

7. The tnsnames.ORA file needs to be checked for proper configuration which can be found in the Admin folder of the installation on the storage drive.

An example path is shown below along with a screenshot. Be sure to match the host address with either the Transact computer name or IP address.

**For example: F:\app\jgarcia\product\12.1.0\client\_1\Network\Admin**



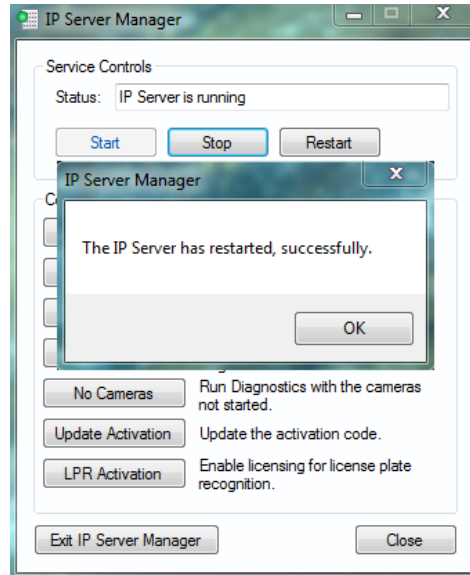
**\*\*NOTE\*\***

No additional information is required and the ORA file should resemble the image above, other than the HOST = being different, to match the Transact System.

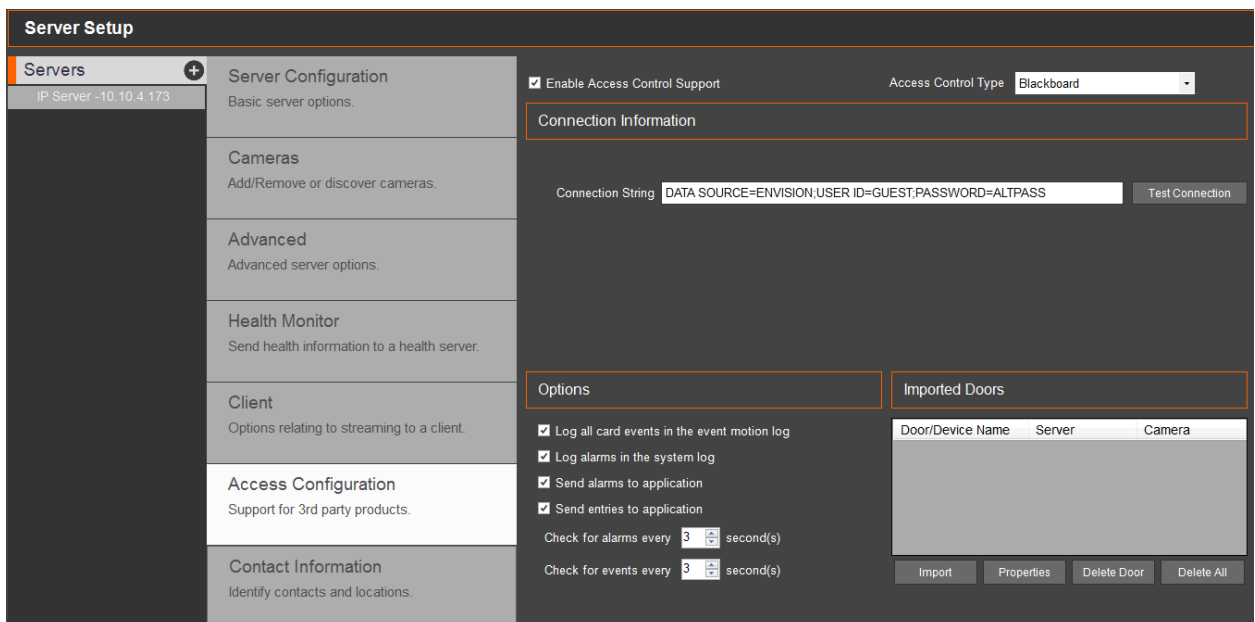
# VIDEOINSIGHT

## Integration Setup and Configuration within Video Insight

1. After Oracle has been installed and configured, restart the IP Service.



2. Launch VI Monitor and navigate to Administration > Servers > Access Configuration.
3. From VI Monitor, enable the Access Control Support checkbox and select Blackboard from the Access Control Type field.



# VIDEOINSIGHT

4. Enter the Connection String with the correct Transact information.

Enable Access Control Support  Access Control Type: Blackboard

Connection Information

Connection String: DATA SOURCE=ENVISION USER ID=GUEST PASSWORD=ALTPASS

Test Connection

Labels: Connection Alias, Transact User Name, Transact Password

**\*\*NOTE\*\*** The connection string should be in the format shown below using database credentials

**DATA SOURCE=ENVISION;USER ID=GUEST;PASSWORD=ALTPASS**

5. Once the correct string has been entered, click Test Connection to verify the integration is working. You will receive a dialog box that reads : Access control system connection successful

Enable Access Control Support  Access Control Type: Blackboard

Connection Information

Connection String: DATA SOURCE=ENVISION USER ID=GUEST PASSWORD=ALTPASS

Test Connection

VI Monitor

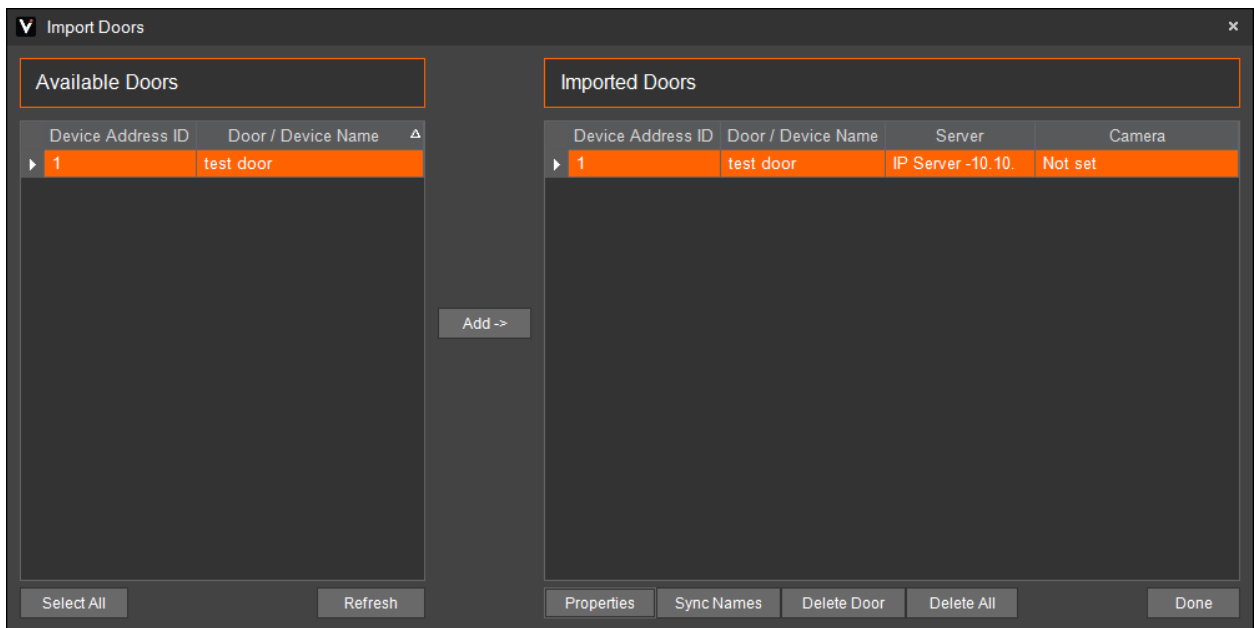
Access control system connection successful.

OK

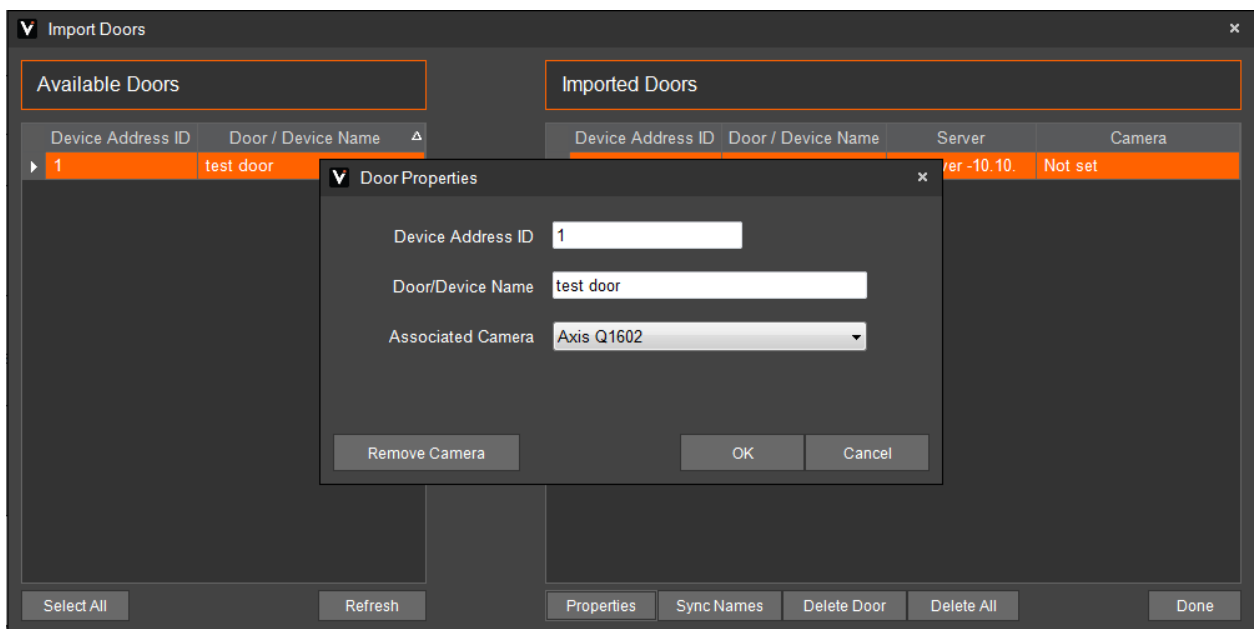
Options Imported Doors

6. Click on "Import Doors" to display the list of doors in the Transact System.
7. Select the desired doors to add to VI Monitor by selecting a door and clicking the Add -> button.

# VIDEOINSIGHT



8. The doors will not be imported or configured completely unless a camera is associated with a door. Select a door and click Properties to associate a camera. Click OK.



The installation is now completed.