

VIDEOINSIGHT

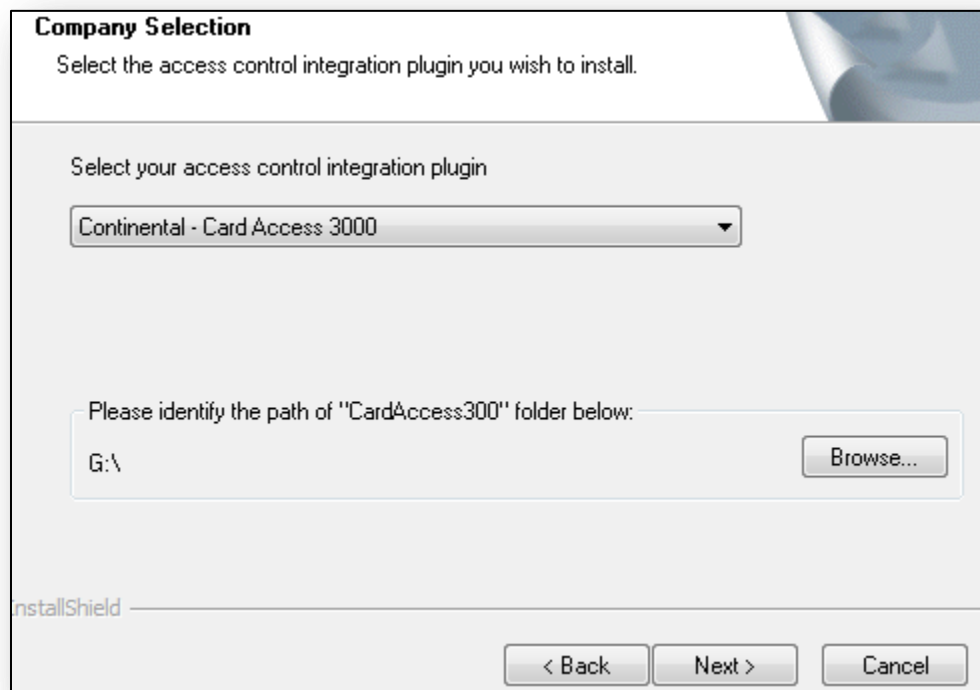
Continental Card Access 3000 Integration Guide

Prerequisites

1. An existing installation of Continental CA3000 2.9.53 or later including an API License.
2. Video Insight 5.5.32.4 or later.
3. Port 9090 needs to be open between CA3000 and IP Server.
4. Ability to install listener to CA3000 client via network path from Video Insight Plugin on IP Server.
5. Video Insight Plugin for Access Control Installer from www.downloadvi.com.
6. Mapped drive on the IP Server pointing to the CardAccess3000 folder.

VI Plugin Setup and Configuration with CardAccess3000

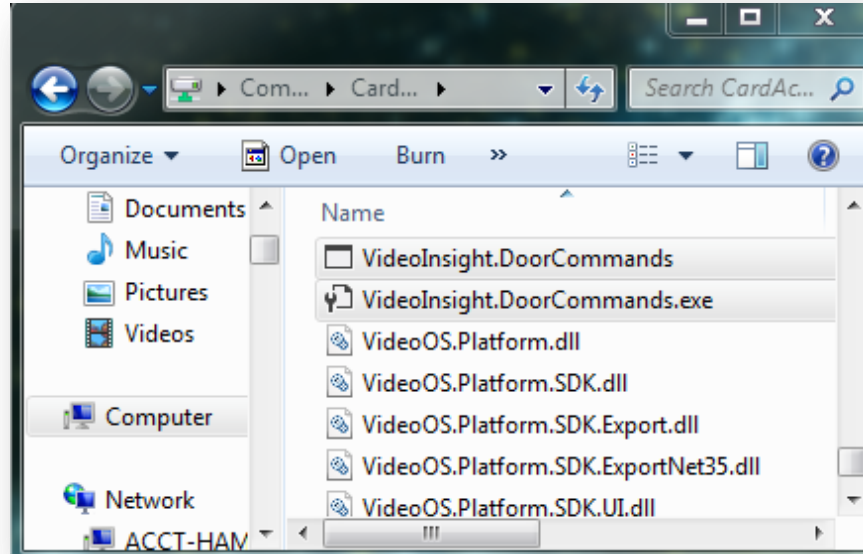
1. After downloading the Video Insight Plugin Installer, run the Video Insight Plugin and select **Continental– Card Access 3000** from the drop down.



2. Browse to the mapped drive of the CardAccess3000 folder, in this case, we have selected drive G:\.

VIDEOINSIGHT

3. After the installation has completed, check the CardAccess3000 folder for the following files.
 - VideoInsight.DoorCommands (Application)
 - VideoInsight.DoorCommands.EXE (XML Configuration File)

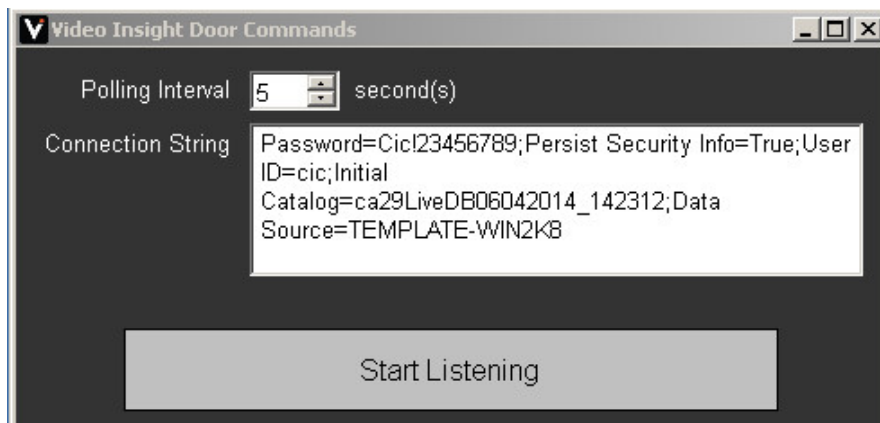


****NOTE****

These files are needed for Door Control from Video Insight Server

4. Run the VideoInsight.DoorCommand application after installing the DLL so that the listener can be assigned the needed connection string. Below is an example of the connection string.

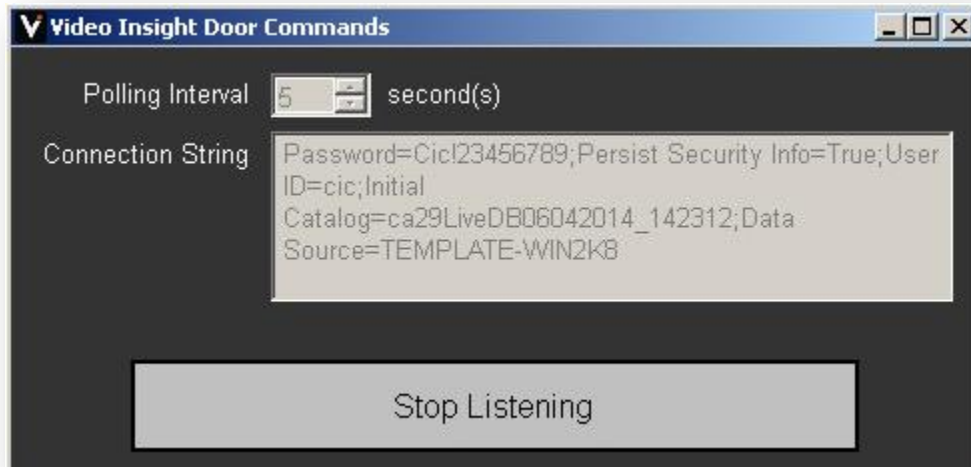
**Password=SQLPASS;Persist Security Info=True;User ID=SQLUSER
Catalog=SQLDATABASENAME;Data Source=HOSTNAMEORIP**



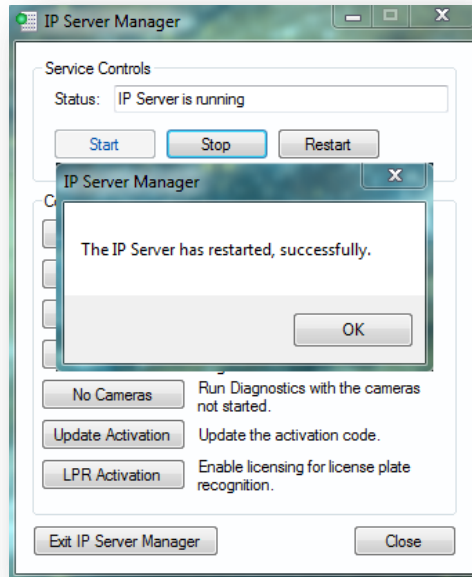
VIDEOINSIGHT

Integration Setup and Configuration within Video Insight

1. Start the Video Insight Door Command listener and click Start Listening.



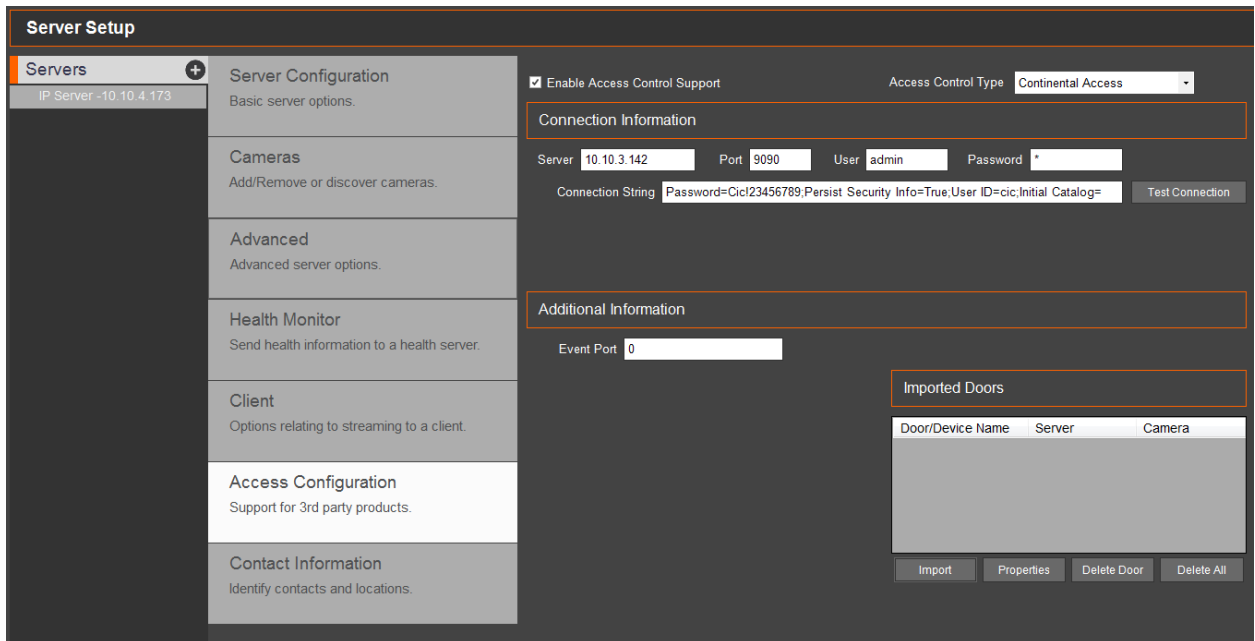
2. After the listener has started, restart the IP service.



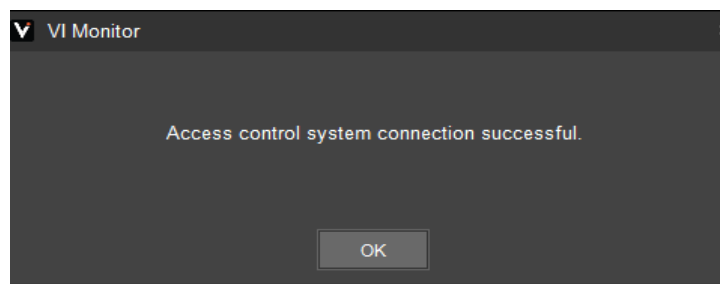
3. Launch VI Monitor and navigate to Administration > Servers and Access Configuration.

VIDEOINSIGHT

- From VI Monitor, enable the Access Control Support checkbox and select Continental Access from the Access Control Type.

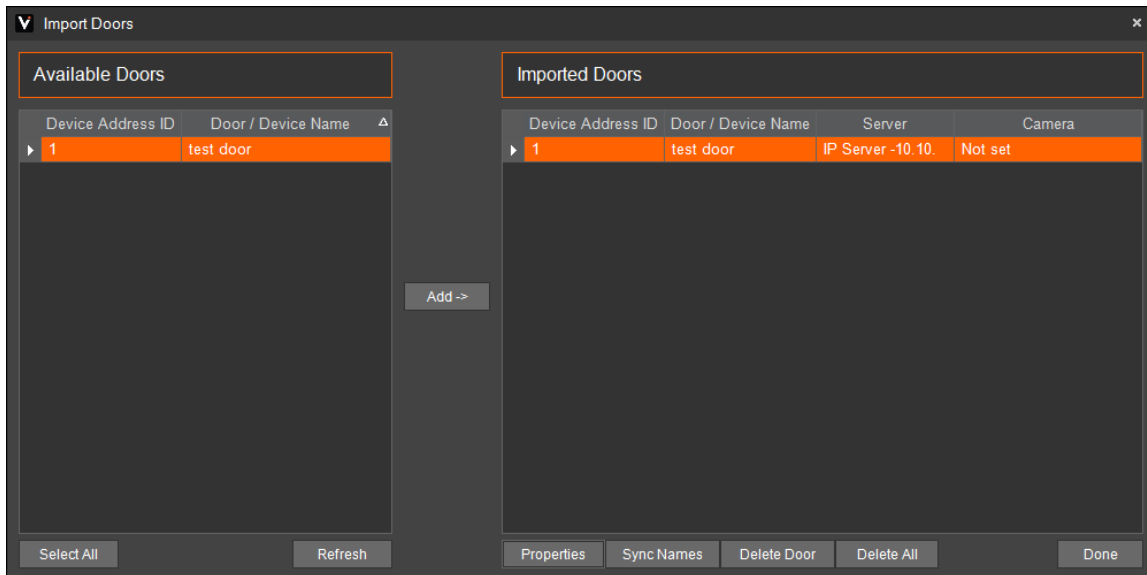


- Enter the following information into the Connection Information Fields
 - Server – Server IP address of the CardAccess3000 System
 - Port – Server port is 9090
 - User – CardAccess 3000 username
 - Password – CardAccess 3000 password
 - Connection string – Use the same string that was used in Video Insight Door Command
- Click Test Connection to confirm the integration is working. A dialog box will appear stating: Access Control System Connection Successful.

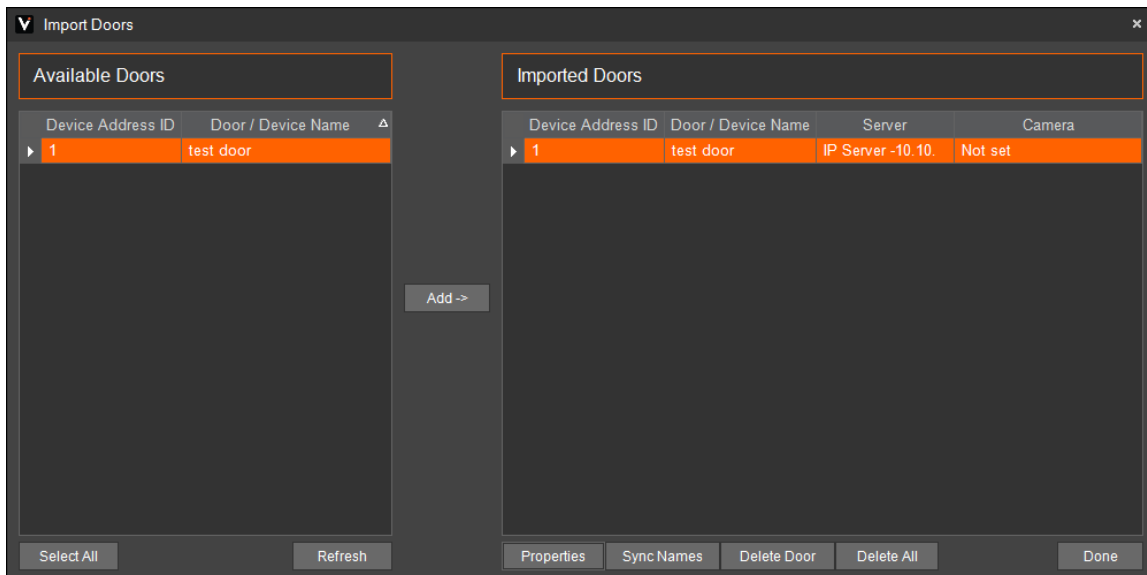


- Click on "Import Doors" to display the list of doors in the CA3000 system.
- Select the desired doors to add to VI Monitor by selecting a door and clicking the Add-> button.

VIDEOINSIGHT



9. The doors will not be imported or configured completely unless a camera is associated with a door. Select a door and click Properties to associate a Camera. Click OK.



The installation is now complete.