

VIDEOINSIGHT

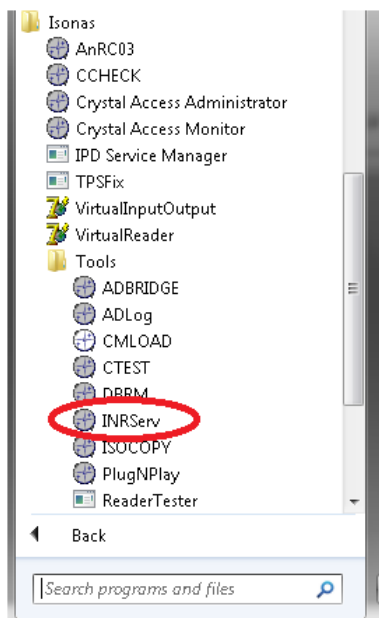
Isonas Integration Guide

Prerequisites

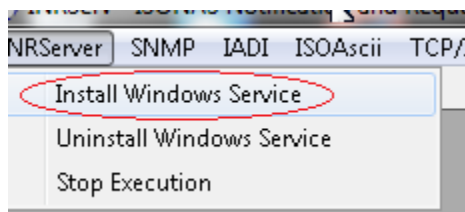
1. An existing installation of Isonas Version 12.22.19 or later currently configured and operational either locally or on another machine.
2. Video insight IP Server Version 5.0.30.4 or later (subject to change based on release)
3. Windows Firewall either turned off or ports 7101/7102 added to the exceptions list.
4. Video Insight Plugin for Access Control Installer from www.downloadvi.com.

Configuration - Isonas

1. First, Isonas TCP/IP will need to be configured in Isonas. To do this, click on Start > All Programs > Isonas > Tools > INRServ. Here is where the server information is configured for communication with Video Insight.

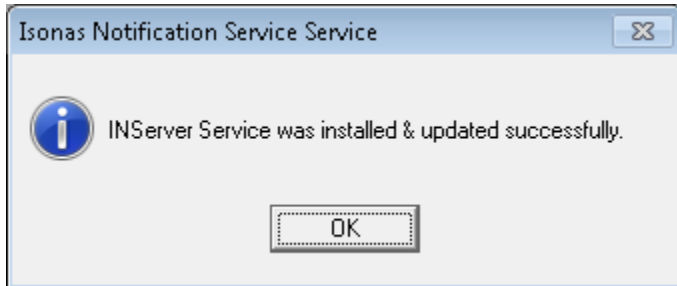


2. **The INRServ Service must be running** in order for Isonas and Video Insight to communicate. In the upper left hand corner, click on INRServ and select "Install Windows Service".

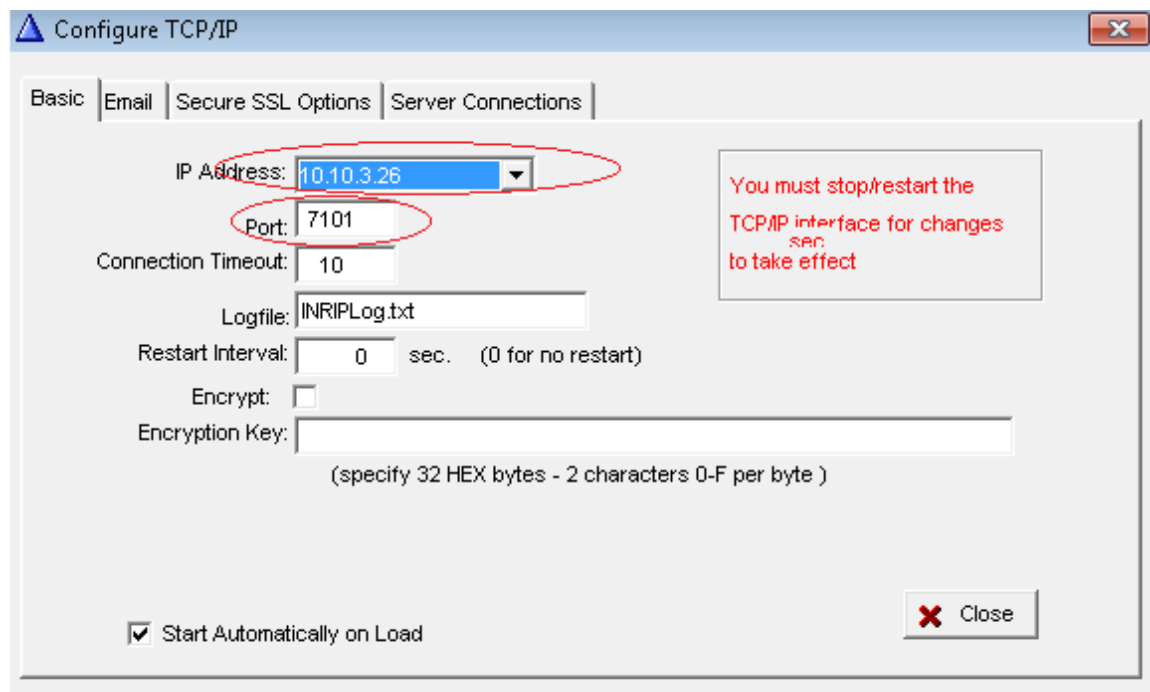


VIDEOINSIGHT

3. Once the service is installed, you should see an Isonas notification stating that the service was successfully installed.



4. After the service has been installed, click on the TCP/IP in the toolbar and then select "Configure". Under the Basic tab, make sure the IP address section has the IP address of the Isonas machine selected and the port number is listed as "7101". Set the Connection Timeout to 0 instead of 10 and the Log file should be "INRIPLog.txt". The Restart interval should be set to 0 as well.

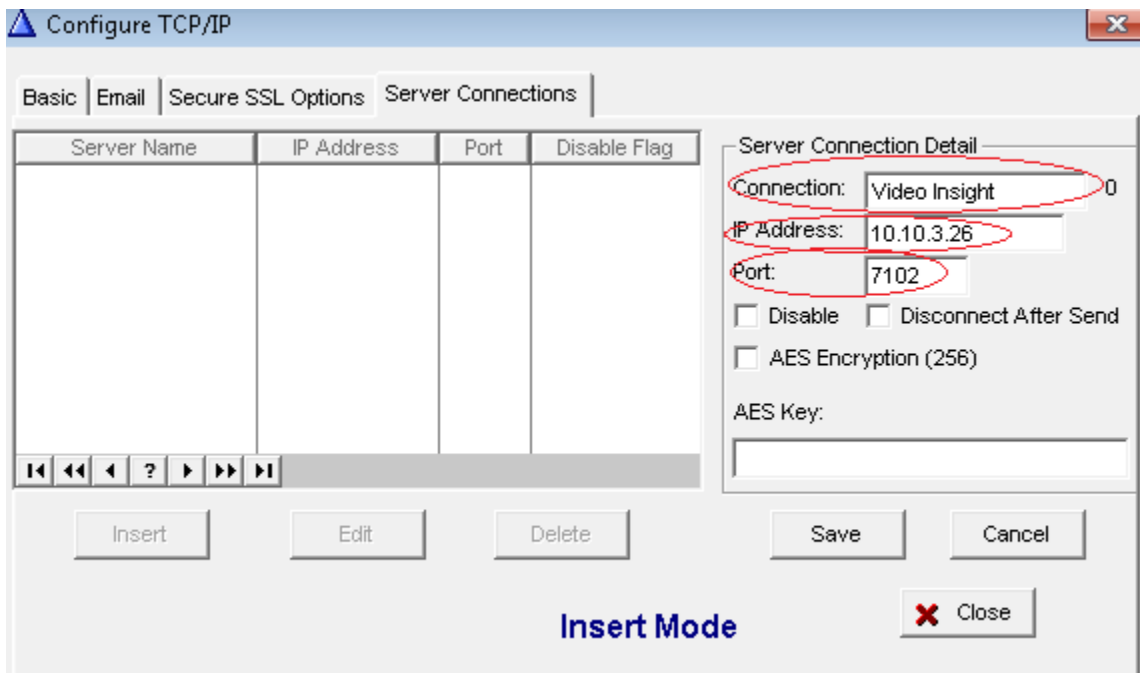


5. Select the Server Connections tab, and then click Insert to enter the Server Connection Detail Information.

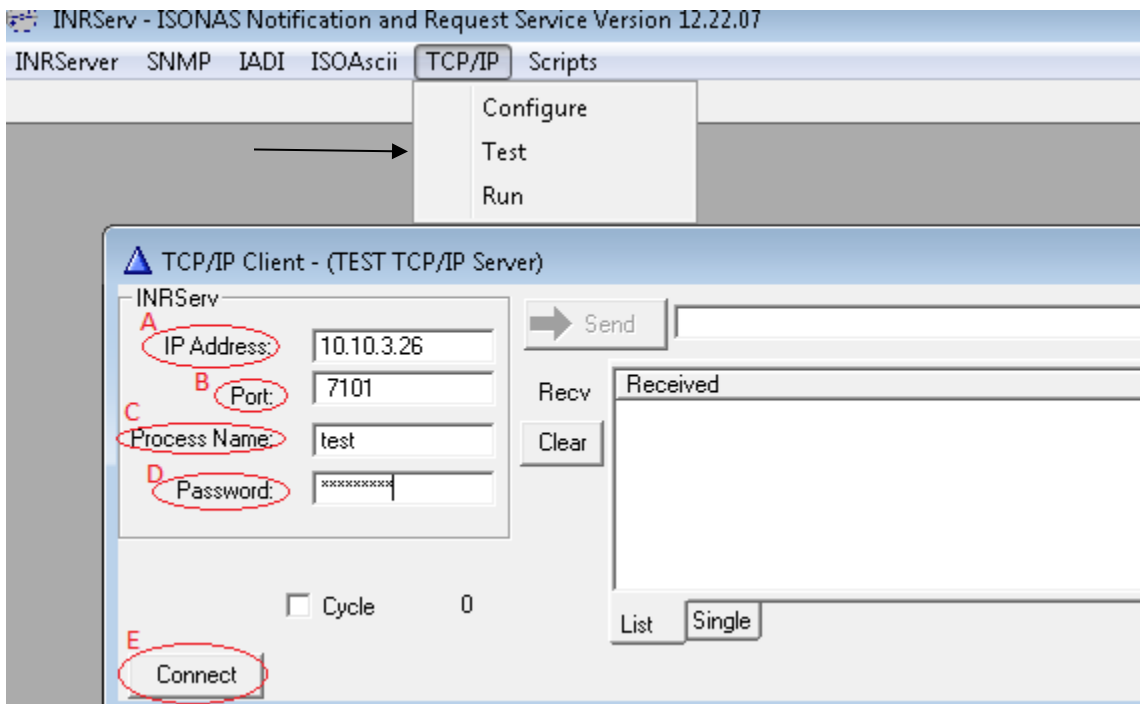
6. List the Server Name as "Connection", and provide the IP Address of the NVR. The port will be listed as 7102.

7. Once this information has been entered, click Save and then Close.

VIDEOINSIGHT



6. Once everything has been configured, you'll need to test the connection. To do this, click on the TCP/IP menu on the tools bar and select Test.

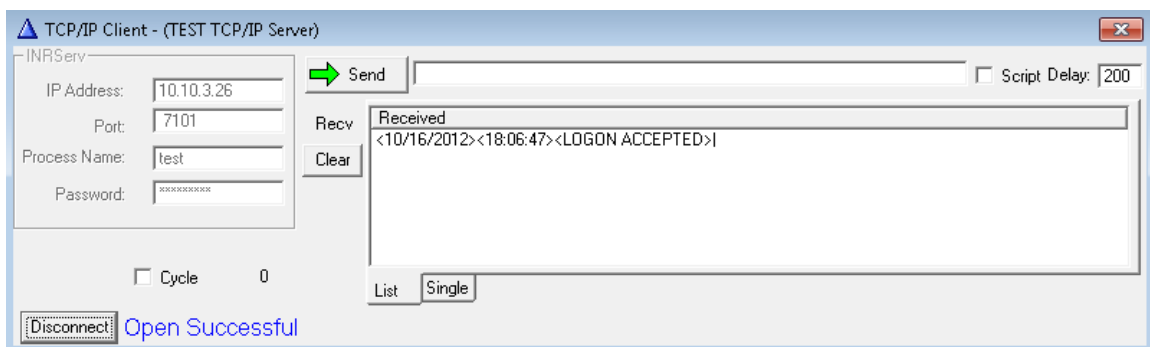


VIDEOINSIGHT

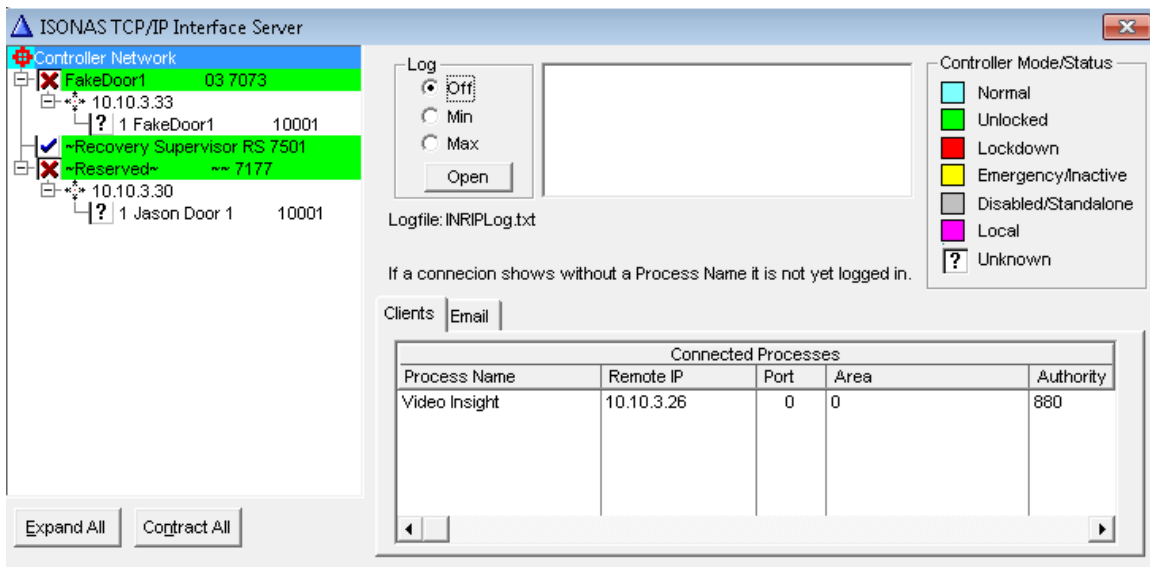
On the TCP/IP Client screen, enter the following fields below:

- **IP Address** - Enter the IP address of the Isonas server.
- **Port** - Enter the Isonas port, which is 7101 by default.
- **Process Name**- This can be anything you choose, in this case we have titled it test.
- **Password** -The password in this field is in the Isonas password, which by default is “apassword”.

7. After this information has been entered, click Connect. This will establish a TCP connection to Isonas and will display <LOGON ACCEPTED> if the connection was successful.



8. Once this has all been completed, restart INRServ and the TCP/IP interface should automatically launch, making a connection which will look like the image below.



****NOTE****

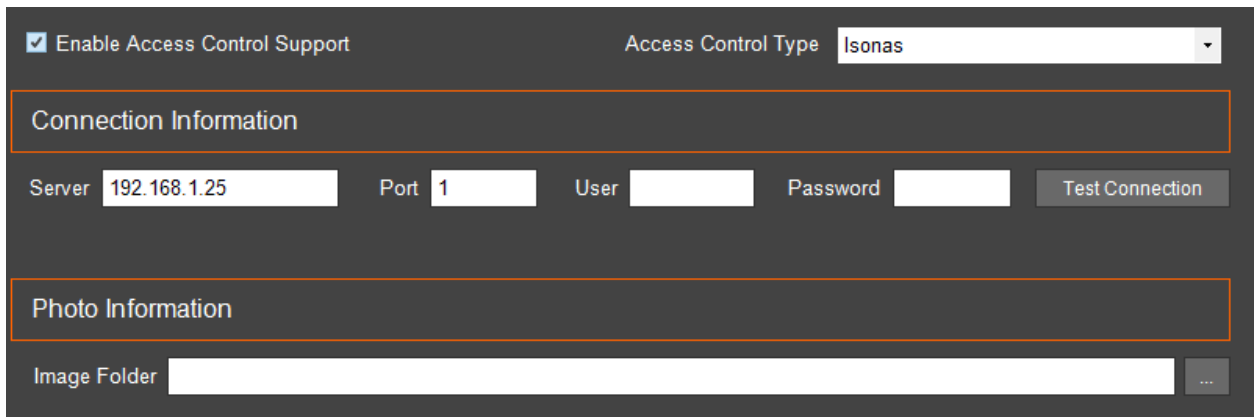
You don't have to open this configuration each time. Remember, this now runs as a Windows service.

VIDEOINSIGHT

Configuration – Video Insight Integration

The access control portion will need to be configured on the Video Insight application. Open the Monitor Station and Administration > Servers and Access Configuration.

From VI Monitor, enable the Access Control Support checkbox and select Isonas from the Access Control Type.

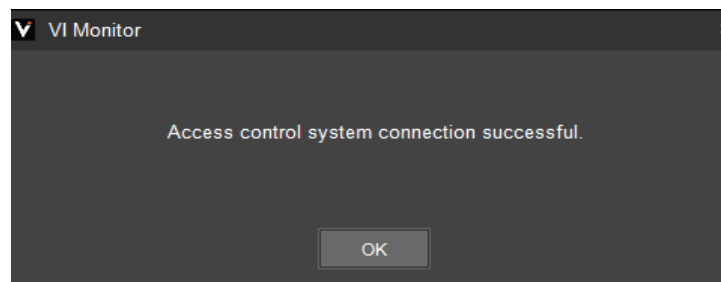


The screenshot shows the configuration interface for Video Insight. At the top, there is a checkbox labeled "Enable Access Control Support" which is checked. To its right is a dropdown menu for "Access Control Type" with "Isonas" selected. Below this is a section titled "Connection Information" which contains four input fields: "Server" with the value "192.168.1.25", "Port" with the value "1", "User" (empty), and "Password" (empty). A "Test Connection" button is located to the right of the password field. Below the "Connection Information" section is a section titled "Photo Information" which contains an "Image Folder" input field with a browse button (three dots) to its right.

1. Enter the following information into the Connection Information Field:

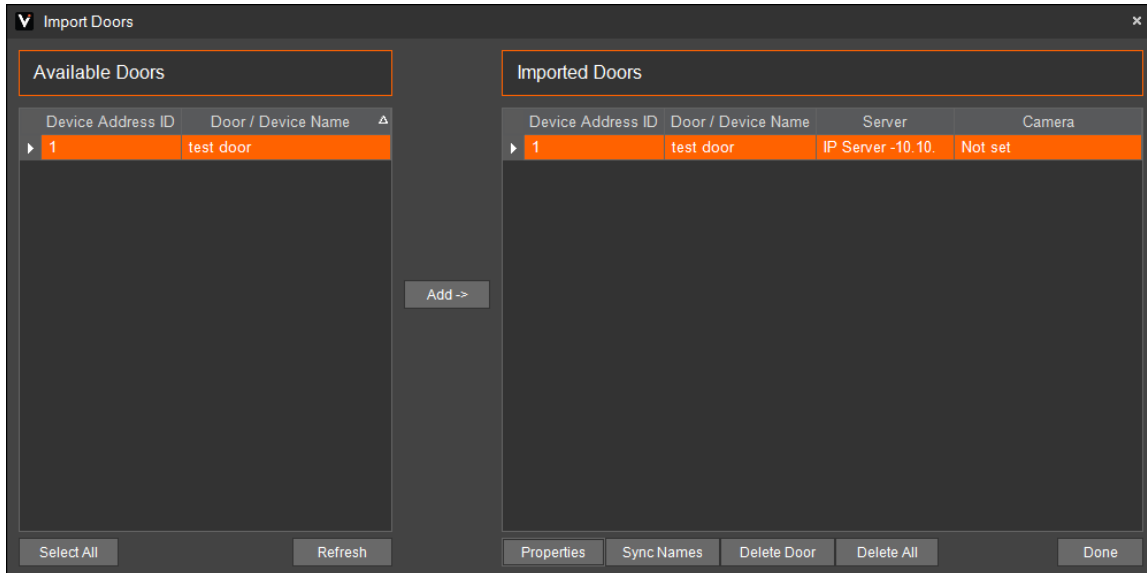
- **IP Address** - Enter the IP address of the Isonas System.
- **Port** - The listening port for Isonas is "7101".
- **User** - The operator name should be Admin by default.
- **Password** - "apassword" is the default password for the Isonas system.
- **Image Folder**- Image Folder should contain the path designated by Isonas for the pictures assigned to the users. By default it's "C:\APPS\ISONAS\Images\".

2. Click Test Connection to confirm the integration is working. A dialog box will appear stating: Access Control System Connection Successful.

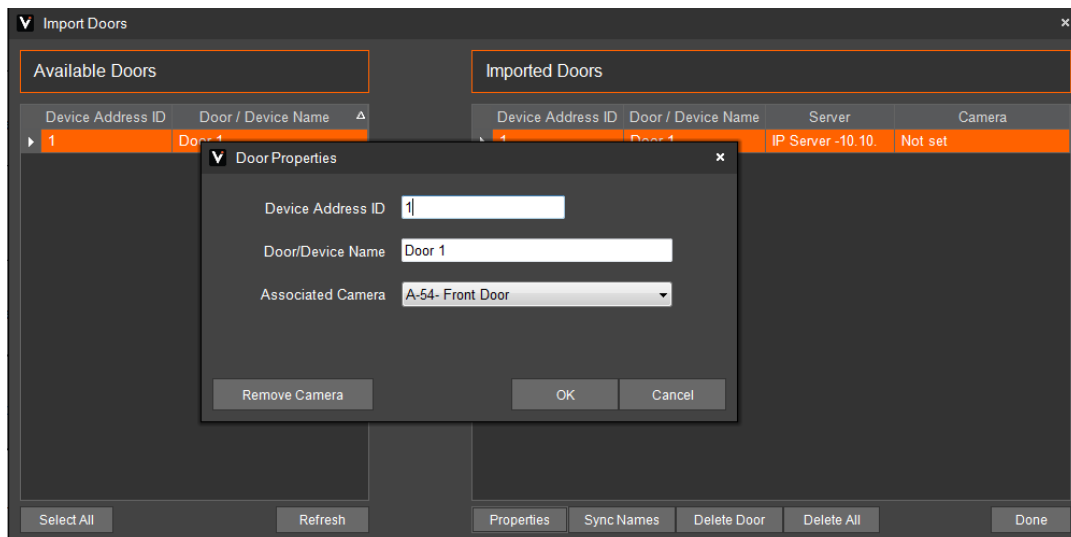


VIDEOINSIGHT

3. Click on “Import Doors” to display the list of doors in the Infinias system.
4. Select the desired doors to add to VI Monitor by selecting a door and clicking the Add-> button.



5. The doors will not be imported or configured completely unless a camera is associated with a door. Select a door and click Properties to associate a Camera. Click OK.



The installation is now complete.