

VIDEOINSIGHT

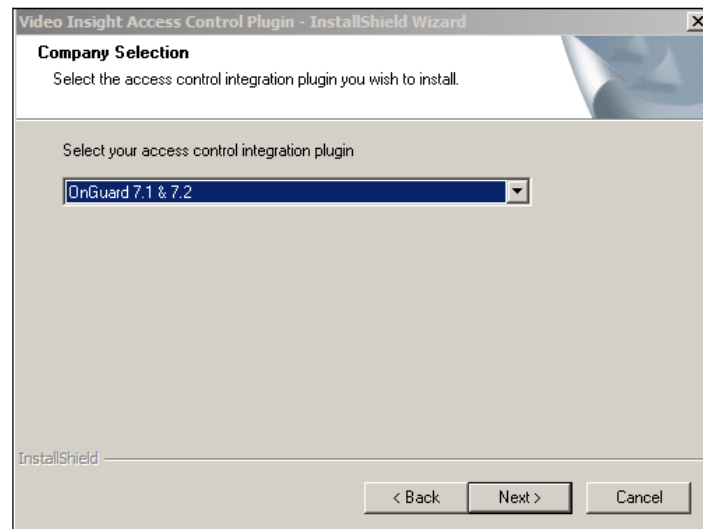
Lenel OnGuard Data Conduit Integration – Integration Guide

Prerequisites

1. Installation of Video Insight IP Server 6.2.16.8 or later
2. Lenel OnGuard 7.1 or 7.2
3. Download the Video Insight Access Control Installer from www.downloadvi.com

Configuration – Video Insight Integration

First, run the Video Insight Plugin installer and select **OnGuard** from the drop down. Once the installer is complete, make sure to restart VI Monitor/Monitor Station and the IP Service.



The access control portion will need to be configured on the Video Insight application. Open the VI Monitor and click on Server Setup. Select the correct server and select Access Configuration. Enable the Access Control Support checkbox and select **OnGuard** from the Access Control Type.

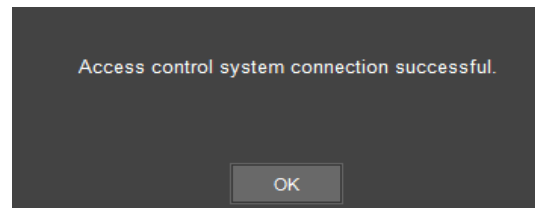
VIDEOINSIGHT

The screenshot shows a configuration window for 'Access Control Support'. At the top, there is a checked checkbox for 'Enable Access Control Support' and a dropdown menu for 'Access Control Type' set to 'Lenel OnGuard'. Below this is a section titled 'Connection Information' containing several input fields: 'Server' (10.231.0.2), 'Port' (0), 'User' (Administrator), and 'Password' (masked with asterisks). There is also a 'Connection String' field and a 'Test Connection' button. Below the 'Connection Information' section is an 'Additional Information' section with an 'Event Port' field set to 0.

1. Enter the following information into the Connection Information Field:

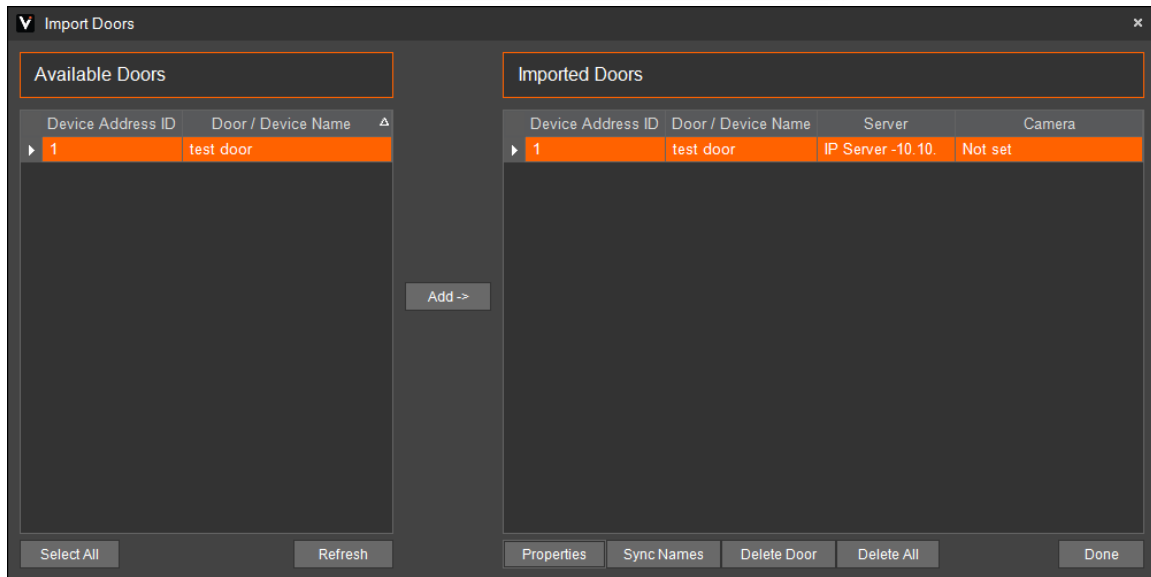
- **IP Address** - Enter the IP address of the Lenel OnGuard System.
- **Port** – The default port should be “0”.
- **User** – This will be the username of the Lenel OnGuard software.
- **Password** – This will be the password of the Lenel OnGuard software.
- **Event Port** – The event port should be listed as “0”.

2. Click Test Connection to confirm the integration is working. A dialog box will appear stating: **Access Control System Connection Successful.**

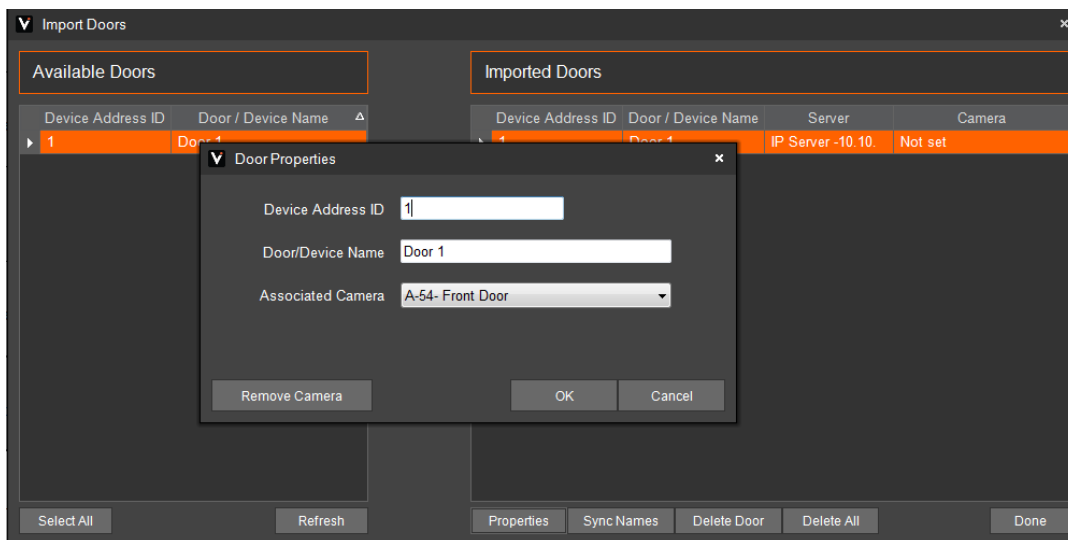


3. Click on “Import Doors” to display the list of doors in the OnGuard system.
4. Select the desired doors to add to VI Monitor by selecting a door and clicking the Add-> button.

VIDEOINSIGHT



5. The doors will not be imported or configured completely unless a camera is associated with a door. Select a door and click Properties to associate a Camera. Click OK.



6. The installation is now complete.