

VIDEOINSIGHT

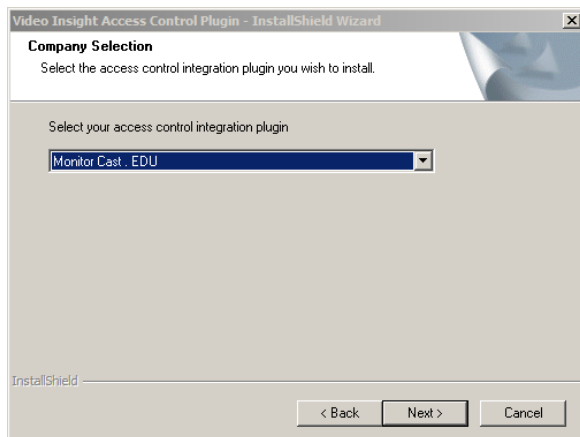
MonitorCast.EDU Integration – Integration Guide

Prerequisites

1. Installation of Video Insight IP Server 5.5.34.5 or later
2. Download the Video Insight Access Control Installer from www.downloadvi.com

Configuration – Video Insight Integration

First, run the Video Insight Plugin installer and select **MonitorCast.EDU** from the drop down. Once the installer is complete, make sure to restart VI Monitor/Monitor Station and the IP Service.



The access control portion will need to be configured on the Video Insight application. Open the VI Monitor and click on Server Setup. Select the correct server and select Access Configuration. Enable the Access Control Support checkbox and select **VI MonitorCast EDU** from the Access Control Type.

Enable Access Control Support Access Control Type: VI MonitorCast EDU

Connection Information

Server: 10.10.5.206 Port: 4020 User: admin Password: ****

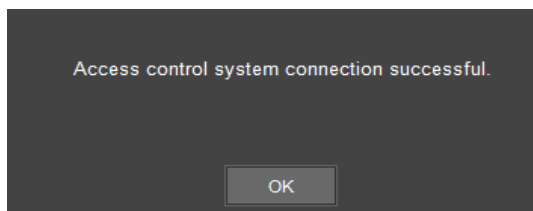
Connection String: _____ Test Connection

VIDEOINSIGHT

1. Enter the following information into the Connection Information Field:

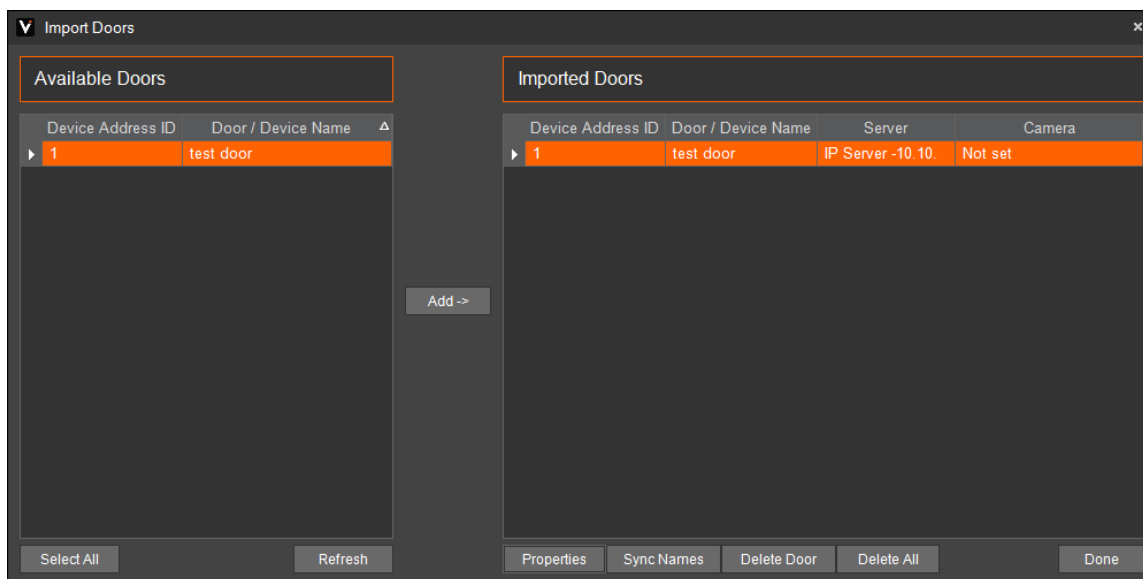
- **IP Address** - Enter the IP address of the MonitorCast.EDU System.
- **Port** – The default port should be “4020”.
- **User** – The default username should be “admin”.
- **Password** – The default password should be “1234”.
- **Event Port** – The event port should be listed as “0”.

2. Click Test Connection to confirm the integration is working. A dialog box will appear stating: **Access Control System Connection Successful.**



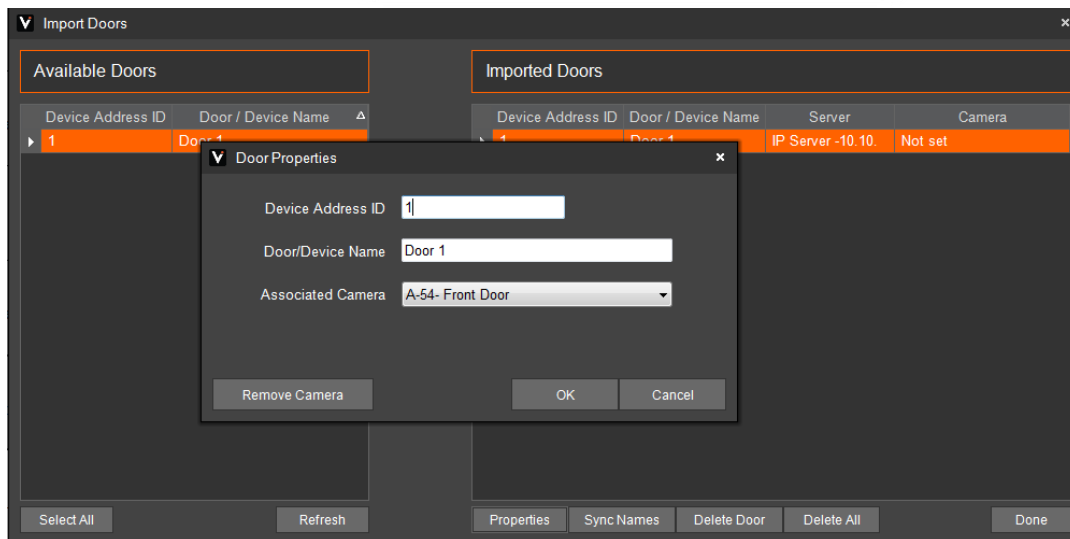
3. Click on “Import Doors” to display the list of doors in the MonitorCast.EDU system.

4. Select the desired doors to add to VI Monitor by selecting a door and clicking the Add-> button.



5. The doors will not be imported or configured completely unless a camera is associated with a door. Select a door and click Properties to associate a Camera. Click OK.

VIDEOINSIGHT



6. The installation is now complete.