

VIDEOINSIGHT

OVID Server
Setup and Configuration Guide

VIDEO INSIGHT, INC.
3 RIVERWAY, SUITE 700
HOUSTON, TX 77056

Table of Contents

| | |
|-------------------------------------|----|
| A. Overview..... | 3 |
| B. Installation..... | 3 |
| 1. Pre-Requisites | 3 |
| 2. Installing the Ovid Server | 3 |
| C. Configuration | 6 |
| 1. Control Panel | 8 |
| 2. Options..... | 9 |
| Add a Server | 10 |
| Remove a Server | 10 |
| Modify a Server | 11 |
| 3. Additional Options..... | 12 |
| 4. Database Details..... | 13 |
| Add a Database Record..... | 13 |
| Remove a Database Record | 14 |
| Modify a Server | 14 |

A. Overview

The OVID Server is a middle tier utility that once installed will make the communication between the S2 client and the Video Insight's server communication possible. To learn how to configure and install the OVID Server, use this manual. Use the separate Comprehensive Administrator Manual to learn how to configure the Video Insight software.

B. Installation

1. Pre-Requisites

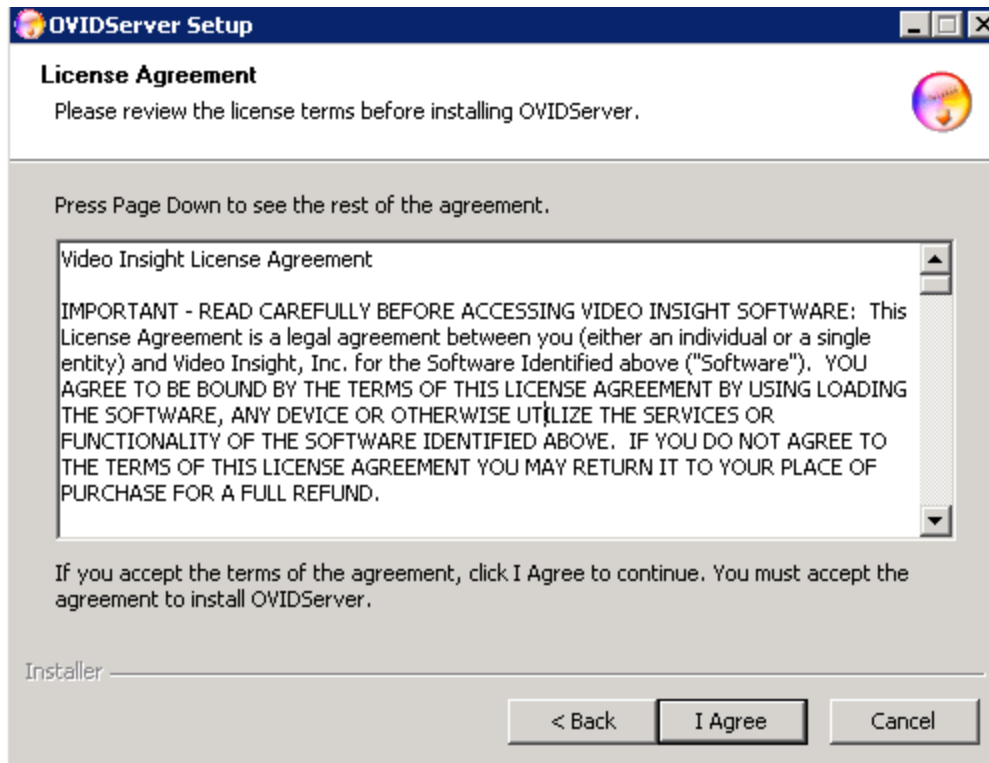
- An existing working IP Service installation
- The Monitor Station client is able to view the desired cameras
- A working S2 installation

2. Installing the Ovid Server

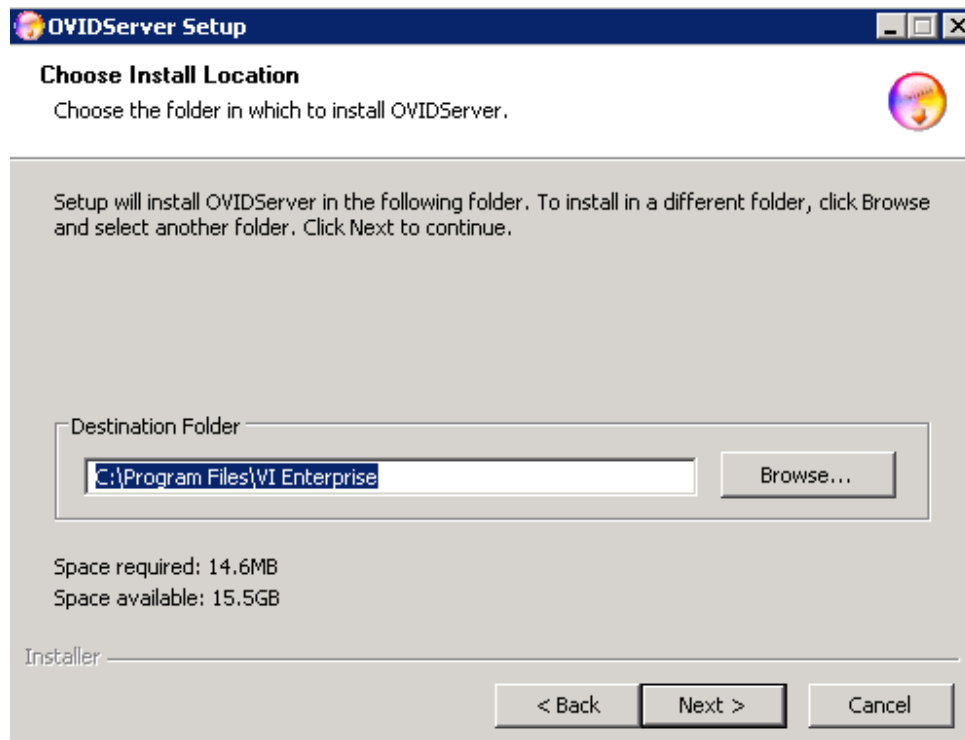
1. Double click the Ovidsetup.exe



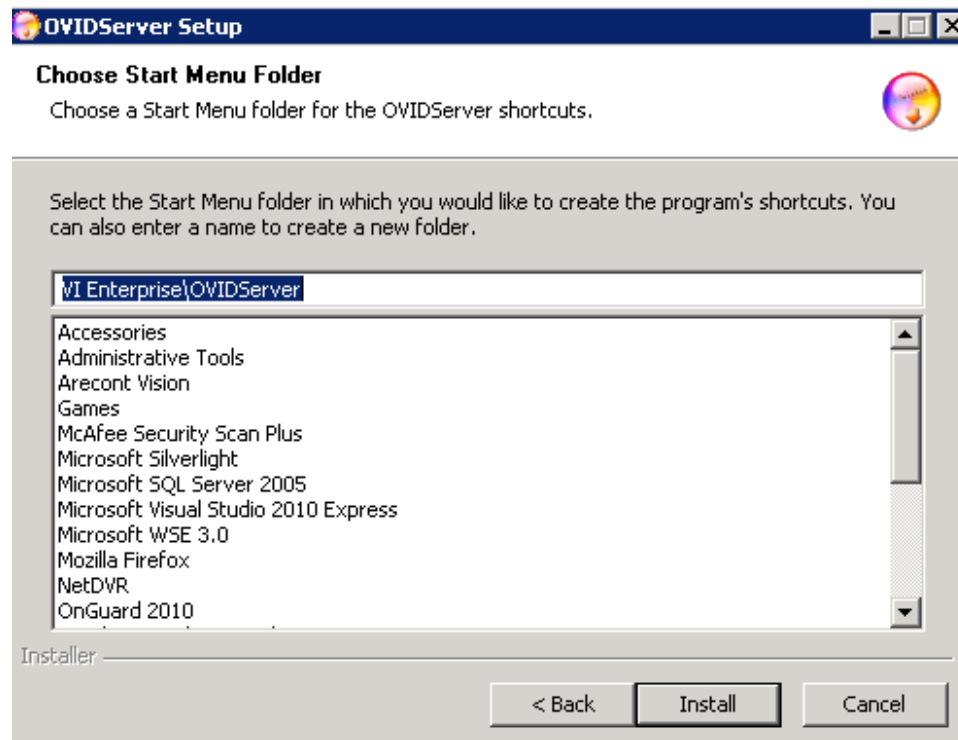
2. Click Next



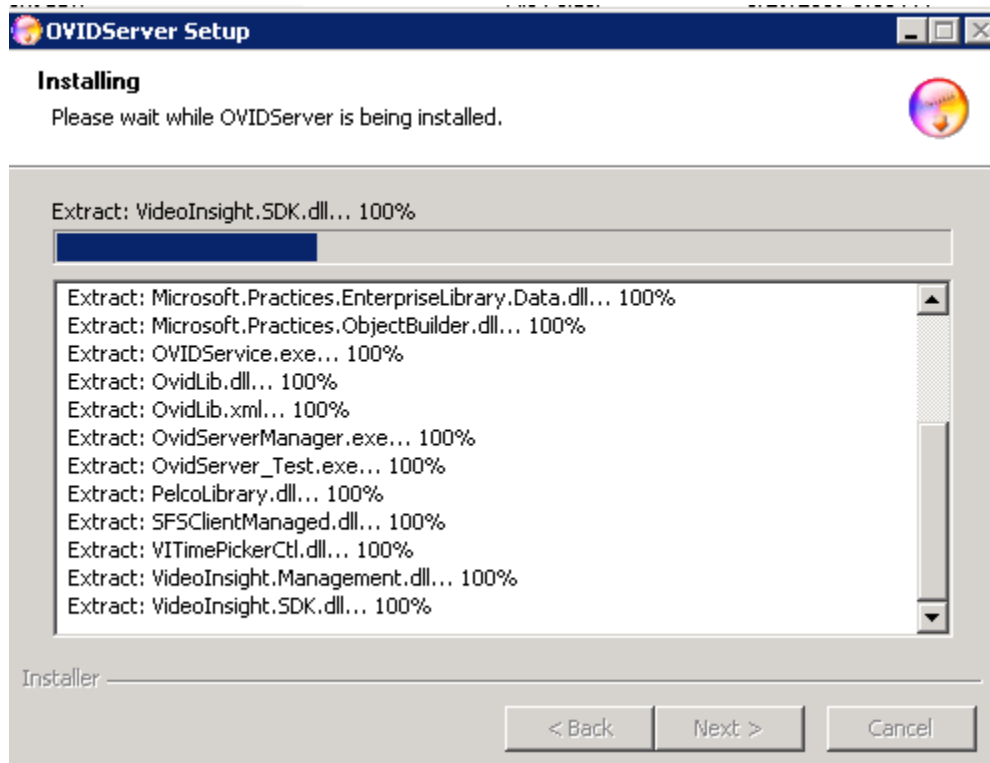
3. Click *I Agree* or press *Cancel* to abort the installation.



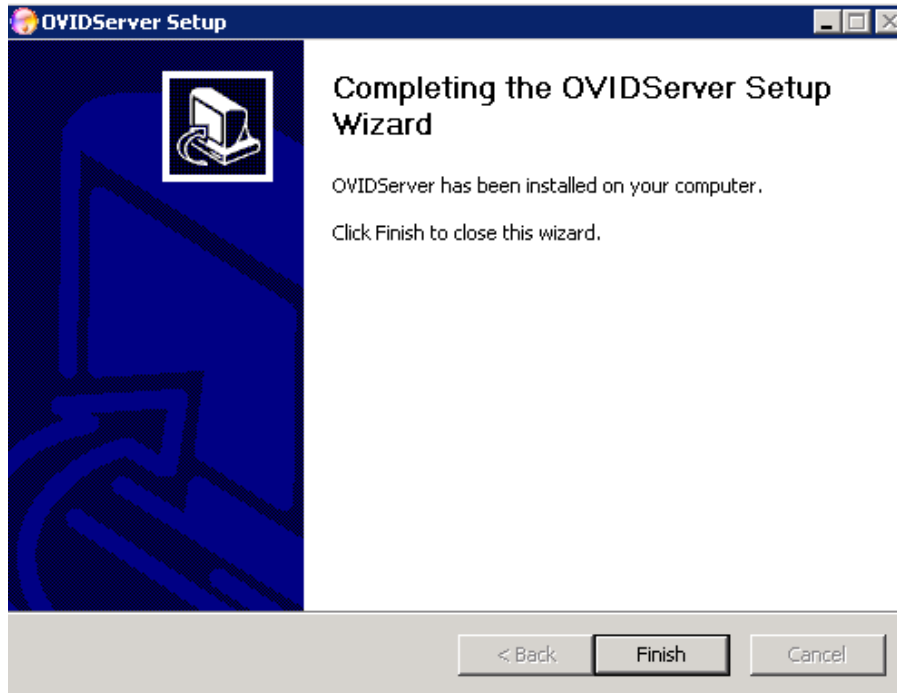
4. Choose your desired install location
5. Click Next



6. Click *Install* to accept the default Start menu as a shortcut location or simply change the path here.



7. Installation will begin, when complete press Finish




Installation is now complete. Refer to the next section for details regarding proper configuration.

C. Configuration

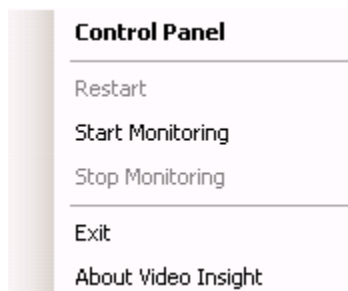
1. Launch the *Ovid Server* application utility by double clicking the newly created Ovid Server Desktop Icon.
2. A new icon will appear in System Tray:

There are two states to this System Tray icon:

 = Service is not started

 = Service is started and running

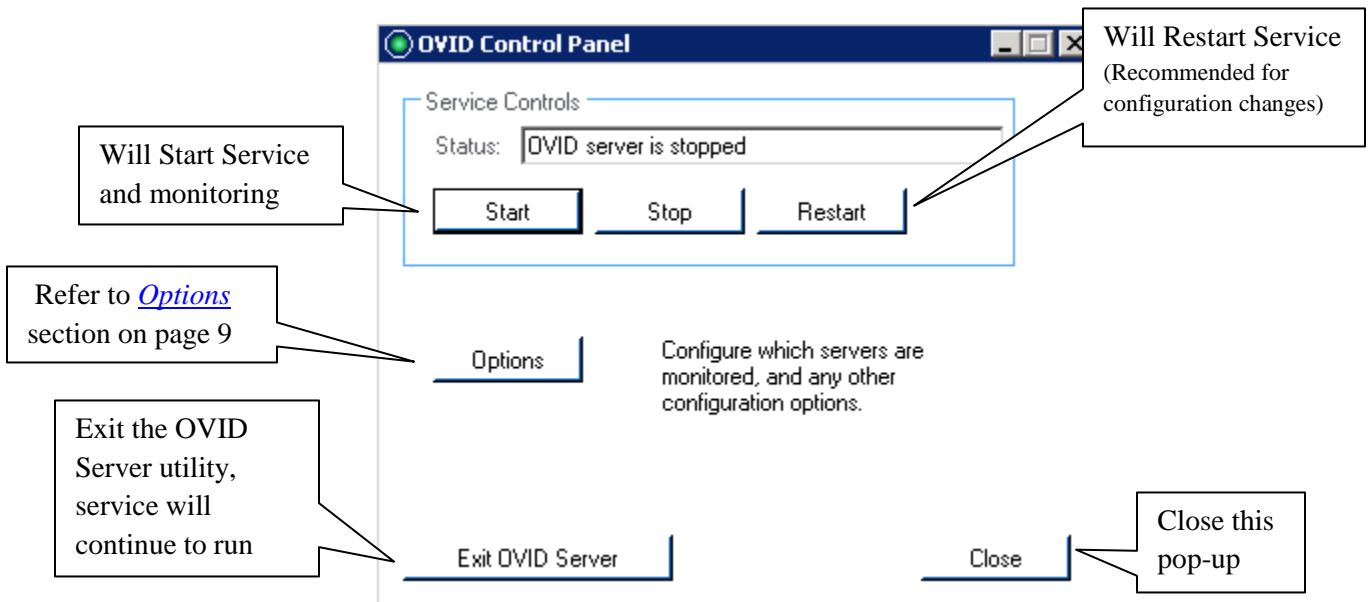
3. Right click the icon, the following menu will appear:



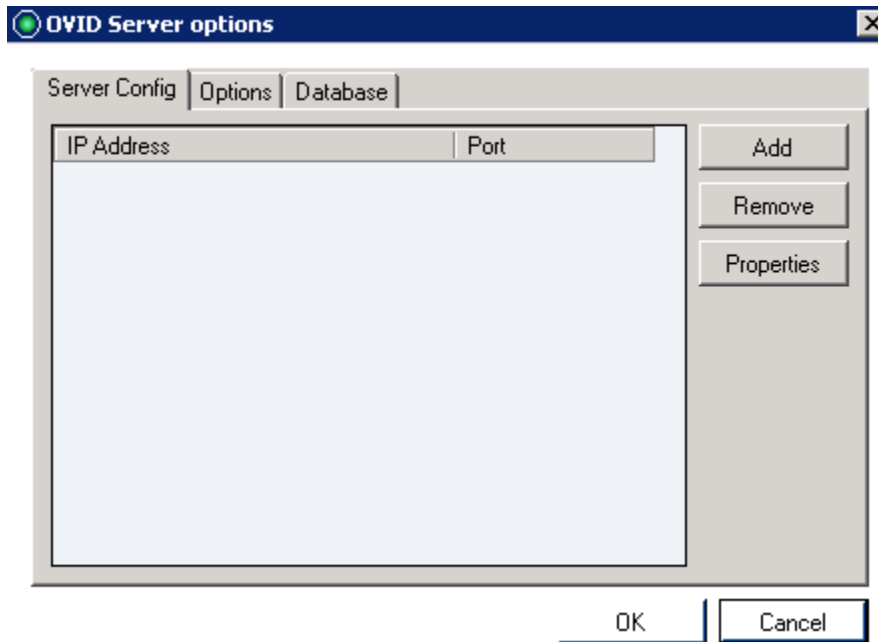
4. The following options are available:
 - a. **Control Panel:** offers a slew of server configuration options discussed below.
 - b. **Restart:** a shortcut to restart the service upon demand, may also be done using Task Manager; service name is OVIDService.exe
 - c. **Start Monitoring:** will be enabled when service is stopped; allows for a shortcut to start service
 - d. **Stop Monitoring:** will be disabled when service is stopped; allows for a shortcut to stop service
 - e. **Exit:** once clicked will exit the OVID Server utility and the OVID Server icon will be removed from System Tray (Service will still run)
 - f. **About Video Insight:** will display information regarding version, Tech Support information and legal verbiage

1. Control Panel

1. Once Control Panel is selected the following will appear:



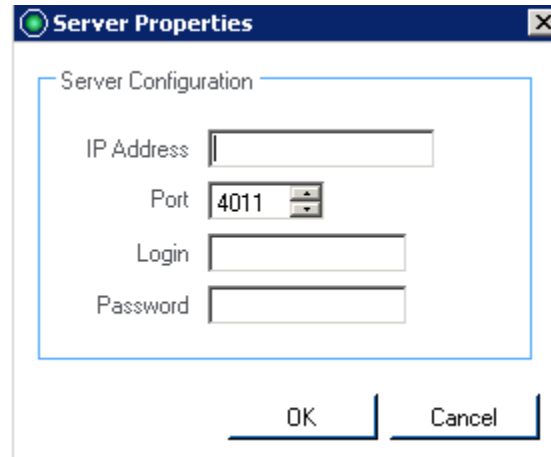
2. Options



Server Config: this tab is used to add, remove, and modify IP Server information.

Add a Server

1. Click Add

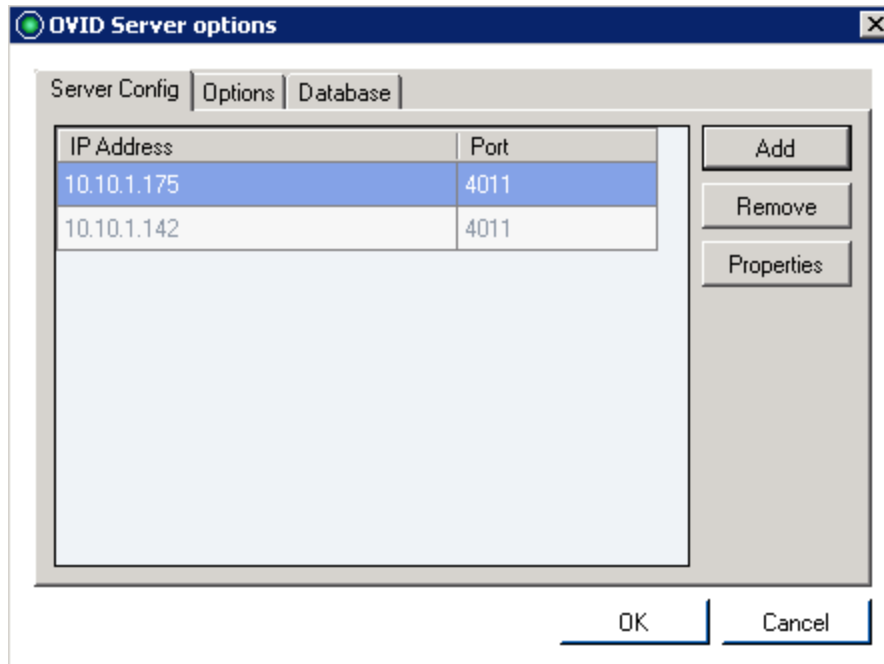


The screenshot shows a 'Server Properties' dialog box. It has a title bar with a green icon and a close button. The main area is titled 'Server Configuration' and contains four input fields: 'IP Address' (text box), 'Port' (spin box with '4011' selected), 'Login' (text box), and 'Password' (text box). At the bottom are 'OK' and 'Cancel' buttons.

2. Enter IP Address of the Video Insight server
3. Specify port if different than default 4011
4. Enter the credentials of a valid administrative user if Security is turned on. To learn how to manage users (page 174) and activate Security (page 38) reference the Comprehensive Administrator Guide.
5. Click OK

Remove a Server

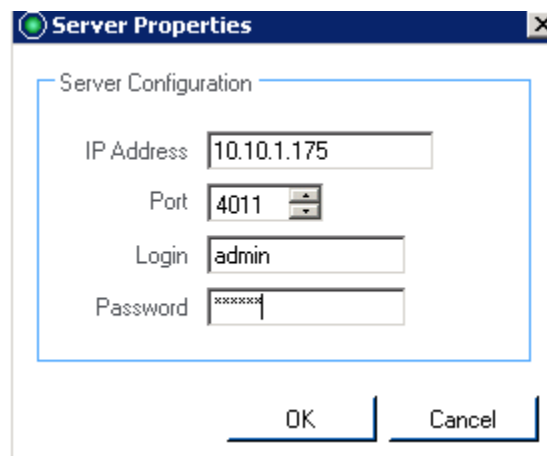
1. Access the *OVID Server Options* pop-up



2. Highlight the server to remove
3. Click Remove (no confirmation will appear)

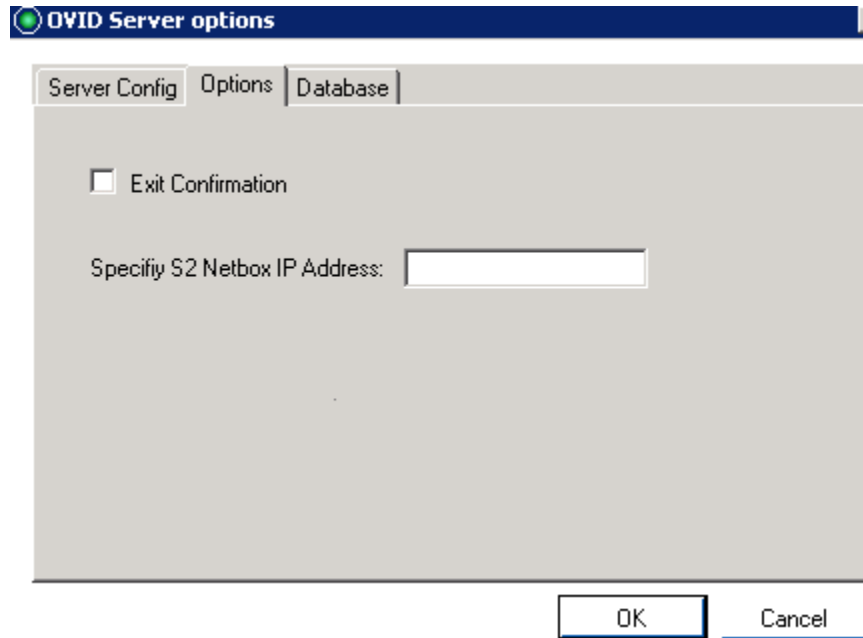
Modify a Server

1. Access the *OVID Server Options* pop-up
2. Highlight the server to modify
3. Click Properties

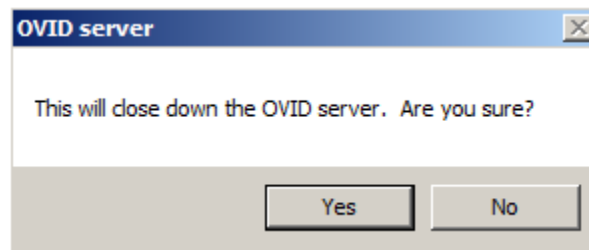


4. Modify applicable fields
5. Click OK

3. Additional Options

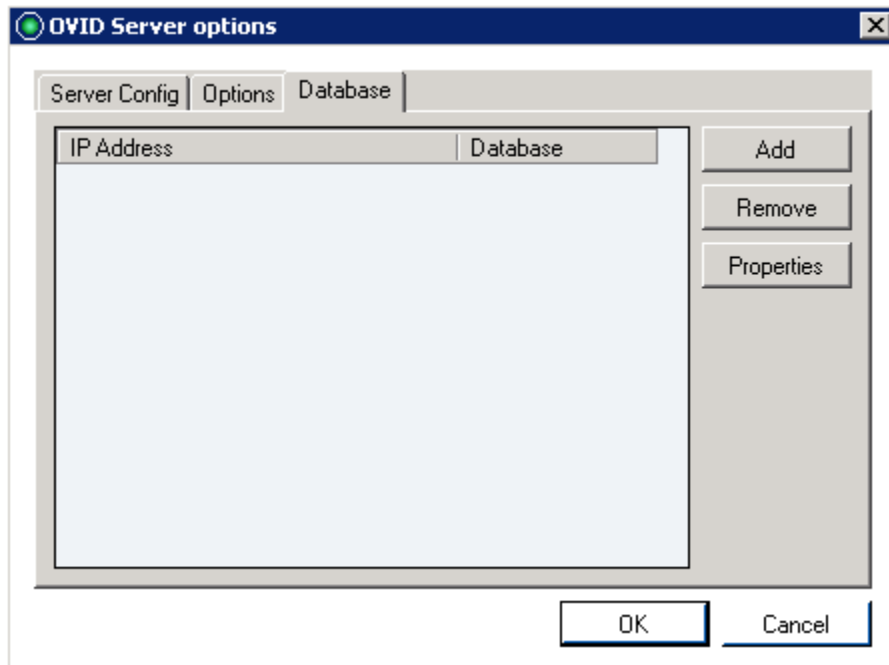


Exit Confirmation: default is checked. When checked and the OVID Application utility is closed the following will appear:



Specify S2 Netbox IP Address: Enter the IP Address where S2 is installed

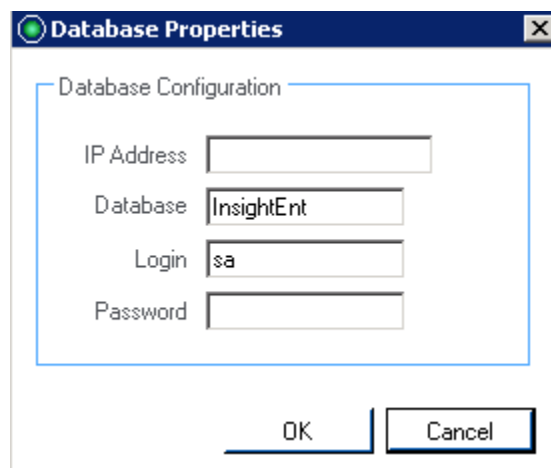
4. Database Details



Database: this tab is used to add, remove, and modify IP Server database information.

Add a Database Record

6. Click Add

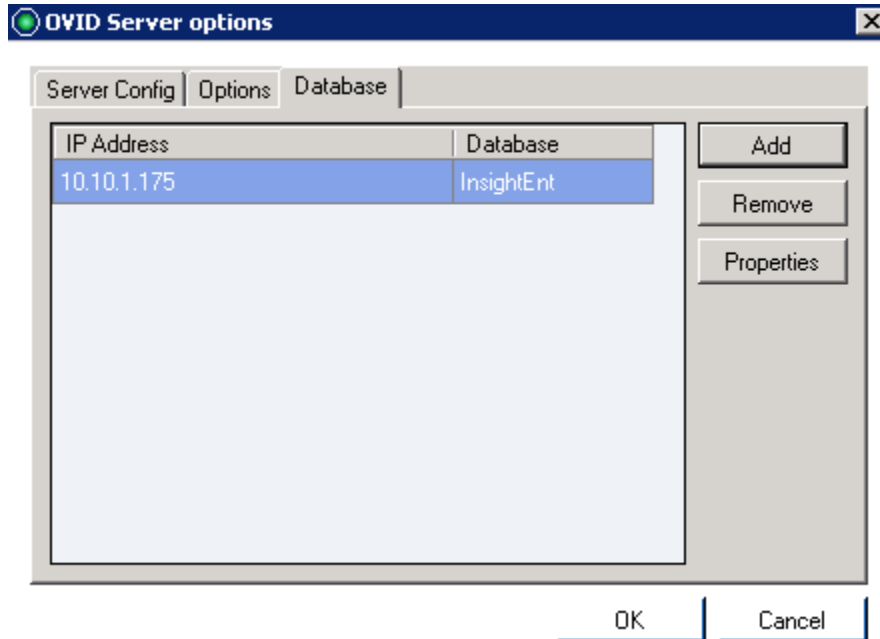


7. Enter IP Address of the Video Insight database server
8. The default Database name should remain InsightEnt

9. Enter database credentials if different than the default VI DB credentials of sa/V4in\$ight
10. Click OK

Remove a Database Record

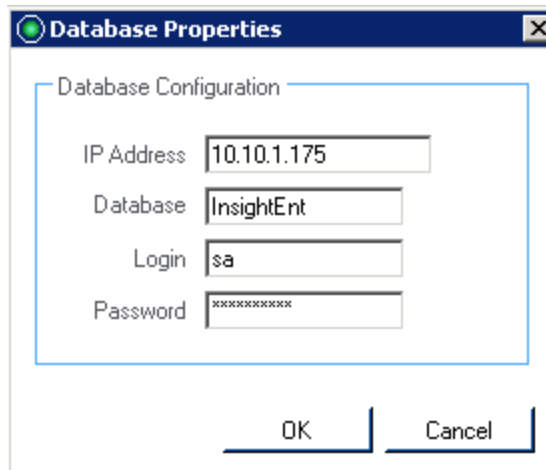
1. Highlight the record to remove



2. Click Remove (no confirmation will appear)
3. Click OK

Modify a Server

1. Highlight the server to modify
2. Click Properties



Database Properties

Database Configuration

IP Address: 10.10.1.175

Database: InsightEnt

Login: sa

Password: *****

OK Cancel

3. Modify applicable fields
4. Click OK



PTZ Capabilities and Presets may or may not be available depending on the camera type and its available features as well as the camera's firmware.