

VIDEOINSIGHT

Open Options (DNA Fusion) Integration Guide

Prerequisites

1. An existing installation of DNA Fusion Build Number 6.2.2.7
2. Video insight IP Server Version 5.5.20.5 or later
3. Configure Binding in the Flex API Utility for DNA and forward the port or disable firewall

Enabling Access Control Support

1. From VI Monitor, enable the Access Control Support checkbox and select Open Options from the Access Control Type.

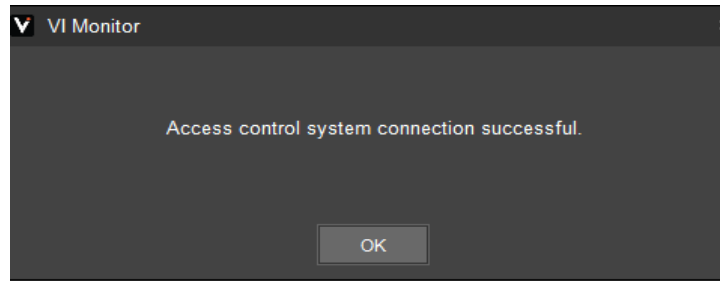
The screenshot displays the 'Server Setup' interface for a 'Garcia - IP Server'. The left sidebar contains a 'Servers' menu with a plus icon and a list of configuration sections: 'Server Configuration' (Basic server options), 'Cameras' (Add/Remove or discover cameras), 'Advanced' (Advanced server options), 'Health Monitor' (Send health information to a health server), 'Client' (Options relating to streaming to a client), 'Access Configuration' (Support for 3rd party products), and 'Contact Information' (Identify contacts and locations). The main content area is titled 'Server Configuration' and includes the following sections:

- Enable Access Control Support:** A checked checkbox. To its right, 'Access Control Type' is set to 'Open Options' in a dropdown menu.
- Connection Information:** A section with input fields for 'Server' (10.10.4.18) and 'Port' (8099), and a 'Test Connection' button.
- Additional Information:** A section with input fields for 'Site ID' (1) and 'API Key' (65309981-d3cf-4d2d-8d5b-091f3).
- Options:** A section with four checked checkboxes: 'Log all card events in the event motion log', 'Log alarms in the system log', 'Send alarms to application', and 'Send entries to application'. Below these are two input fields for 'Check for alarms every' and 'Check for events every', both set to '3' seconds.
- Imported Doors:** A table with columns 'Door/Device Name', 'Server', and 'Camera'. It contains three rows: '2nd 1501 R1', 'Reader 1', and 'Reader 2', all associated with 'Garcia - IP Server' and 'A34'. Below the table are buttons for 'Import', 'Properties', 'Delete Door', and 'Delete All'.

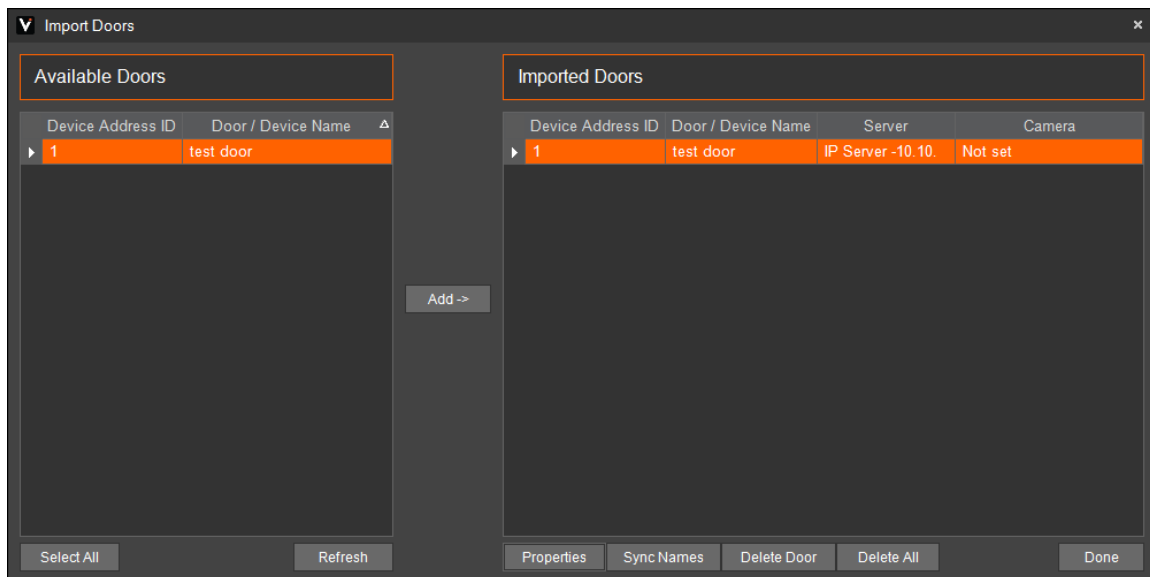
2. Enter the following information into the Connection Information Fields
 - a. **Server** – Server IP address of the DNA Fusion System
 - b. **Port** – Server port is 8099 which was configured in the Flex API Bindings
 - c. **Site ID** – Enter the Site ID of the DNA system
 - d. **API Key** – This is a key that will be provided by Open Options

VIDEOINSIGHT

3. Click **Test Connection** to confirm the integration is working. A dialog box will appear stating: Access Control System Connection Successful.

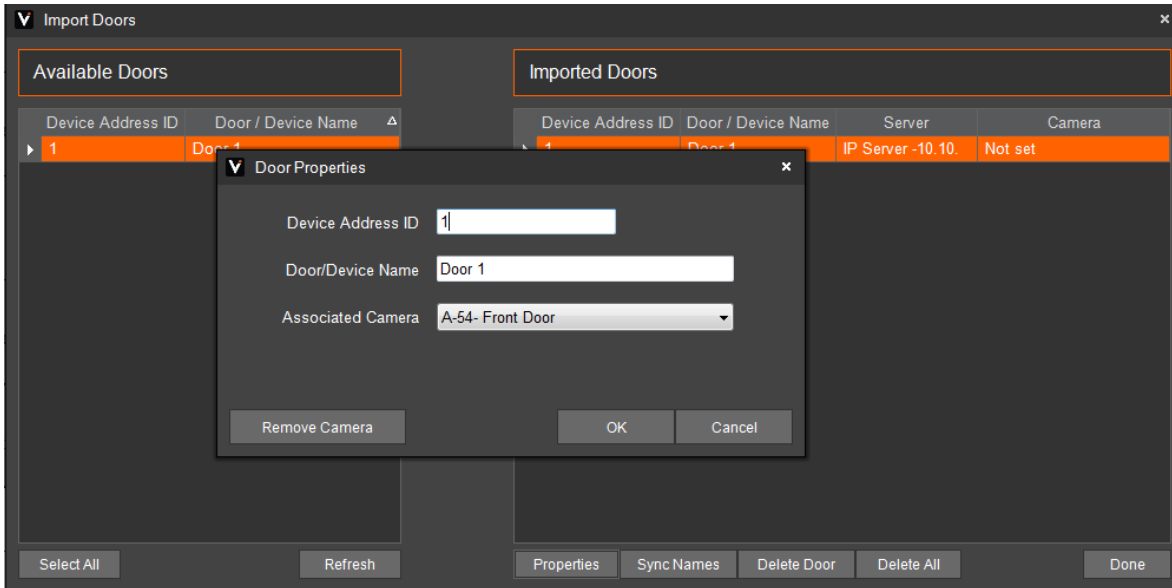


4. Click on **"Import Doors"** to display the list of doors in the DNA Fusion system.
5. Select the desired doors to add to VI Monitor by selecting a door and click the Add > button.



VIDEOINSIGHT

- The doors will not be imported or configured completely unless a camera is associated with a door. Select a door and click Properties to associate a camera. Click OK to finish.



The installation is now complete.