

VIDEOINSIGHT

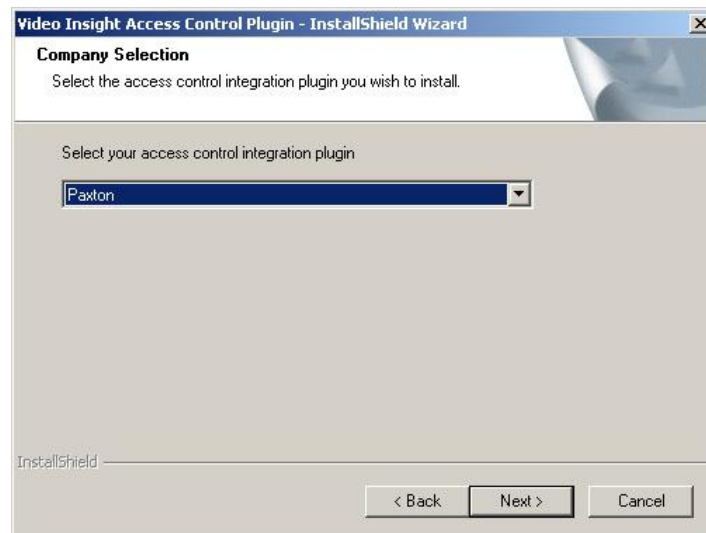
Paxton Integration – Integration Guide

Prerequisites

If using a version of Video Insight IP Server earlier than 6.3.0.12, use the built-in integration found in the IP client. For IP Server versions 6.3.0.12 or higher, use the VIAC plug-in installer found on www.downloadvi.com.

Configuration – Video Insight Integration

First, run the Video Insight Plugin installer and select **Paxton** from the drop down. Once the installer is complete, make sure to restart VI Monitor/Monitor Station and the IP Service.



The access control portion will need to be configured on the Video Insight application. Open the VI Monitor and click on Server Setup. Select the correct server and select Access Configuration. Enable the Access Control Support checkbox and select **Paxton Net2** from the Access Control Type.

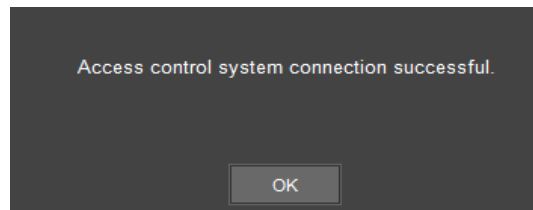
VIDEOINSIGHT

The screenshot shows a configuration window for Paxton Net2. At the top, there is a checkbox for "Enable Access Control Support" which is checked, and a dropdown menu for "Access Control Type" set to "Paxton Net2". Below this is a section titled "Connection Information" containing fields for "Server" (10.231.2.238), "Port" (8025), "User" (System engin), and "Password" (****). There is also a "Connection String" field and a "Test Connection" button. Below the "Connection Information" section is an "Additional Information" section with an "Event Port" field set to 0. At the bottom is an "Imported Doors" section.

1. Enter the following information into the Connection Information Field:

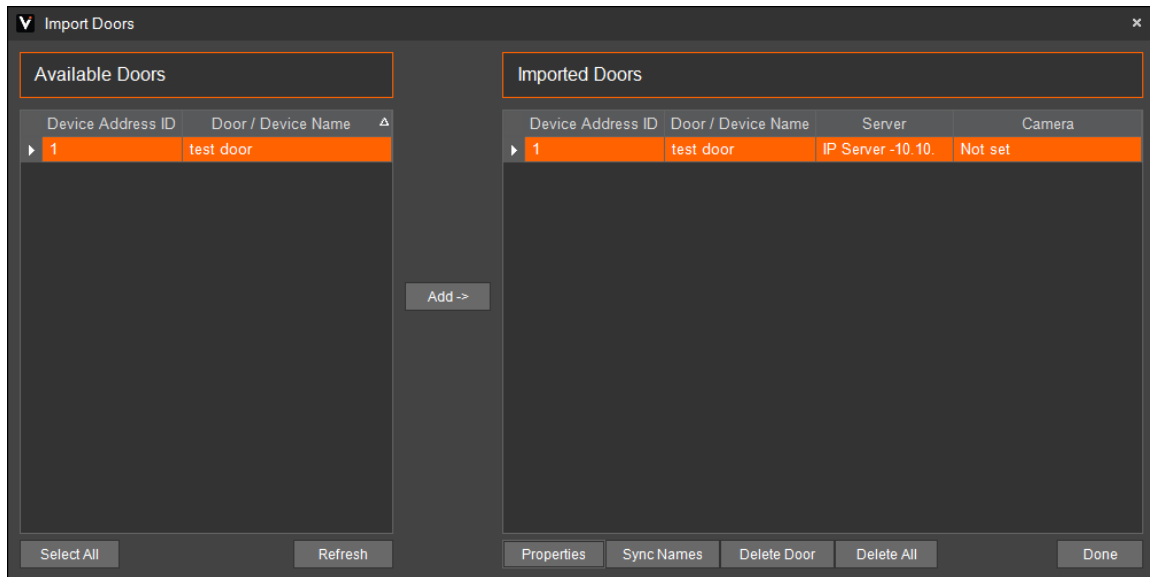
- **IP Address** - Enter the IP address of the **Paxton** system.
- **Port** – The default port should be “8025”.
- **User** – The default username should be “System engineer”.
- **Password** – The default password should be “net2”.
- **Event Port** – The event port should be listed as “0”.

2. Click Test Connection to confirm the integration is working. A dialog box will appear stating: **Access Control System Connection Successful.**

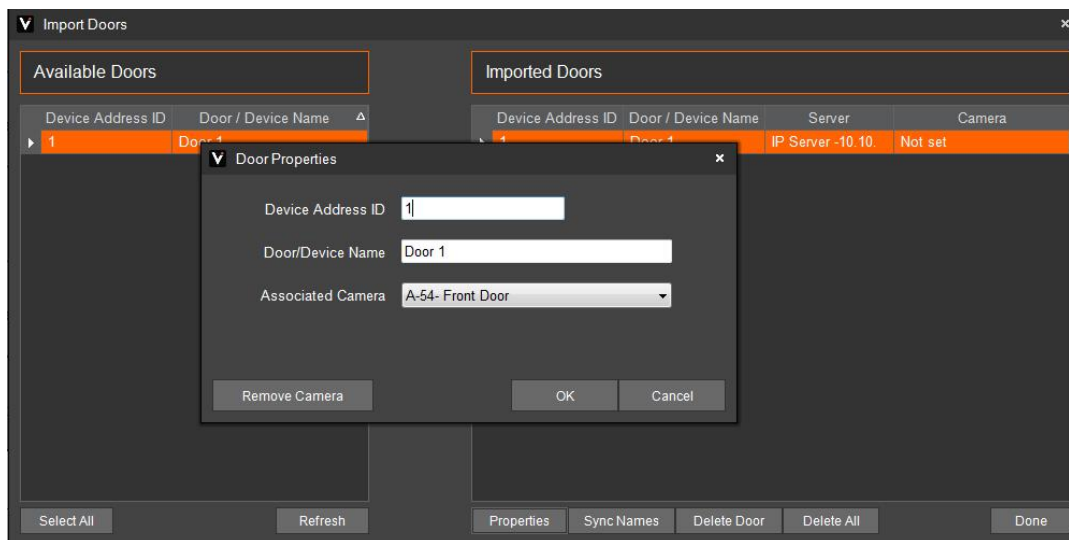


3. Click on “Import Doors” to display the list of doors in the **Paxton** system.
4. Select the desired doors to add to VI Monitor by selecting a door and clicking the Add-> button.

VIDEOINSIGHT



5. The doors will not be imported or configured completely unless a camera is associated with a door. Select a door and click Properties to associate a Camera. Click OK.



6. The installation is now complete.