

IP Enterprise version 5.0.0.18 Release Notes**Table of Contents**

A.	New Camera Integrations and Updates.....	2
B.	Video Communication Systems (VCS) Integration.....	7
C.	Camera probing using Ping.....	8
D.	Ability to Export Camera List.....	9
E.	Server Statistics: New Camera IP Address field.....	10
G.	Added a Tooltip to the Synchronized Player's Clip Option	12
H.	Importing Cameras from IP Version 3.x Option Has Been Removed	12
I.	Option to Start Monitor Station with Paused Video	12
J.	Snapshot Feature Added to Recorded Video	13
K.	Label Options Added to Snapshot Feature.....	14
L.	Non-Admin Users May View Limited Camera Properties	15
M.	Non-Admin Users to Lock Down PTZ Controls	16
N.	SDK Input Rule.....	17
O.	Two Way Audio Feature.....	18

IP Enterprise version 5.0.0.18 Release Notes

Continuing with Video Insight's commitment to iterative development and continuous product improvements version 5.0.0.18 is ready for use.

A. New Camera Integrations and Updates

Camera Mfg.	Models		Supported Features	Notes
VCS Cameras	Generation 1 - MPEG4/MJPEG	Generation 2 - H264/MPEG4/MJPEG	Please refer to summary of VCS camera integration for details in this guide on page 5.	
Lilin iMEGAPRO	IPG01ESX IPD112S IPD112ESX IPR312SX IPR614 IPR414 IPR712S IPR31EMX IPR418	IPR712M IPG022ESX IPD2122S IPD220ES IPR320ESX IPR722S IPR7424 IPR434 IPR733	H264 and MJPEG video capture Audio Capture Motion Detection 1x DI Capture 1x DO Trigger Auto-Discovery	
Bosch	VideoJet		20x MPEG4 decoding improvement	
FlexWATCH	FW1170 FW1173 FW1174 FW1175	FW1176 FW1177 FW1178 FW1179	H264 and JPEG Video Capture Motion Detection Set Resolution Set Compression Set Codec Set FPS Auto-Discovery	
ACTi	TCM-1111		H264, MPEG4, and JPEG Video Capture Motion Detection Motion Window Show Clock Set Resolution Set Compression Set Codec Set FPS Flip	
Arlotto	AR1200 AR1500 AR2200 AR2210 AR2500	AR2510 AR3210 AR3510 AR4200 AR4500	H264, DIVX, and JPEG Audio Capture Motion Detection Set Compression Set FPS Flip 1x DI Capture 1x DO Trigger Auto-Discovery	WebClient JPEG Snapshots not supported by mfg sdk.

Camera Mfg.	Models		Supported Features	Notes
IQeye	IQeye761 IQeye762 IQeye763 IQeye765	IQeye861 IQeye862 IQeye863 IQeye865	H264 and JPEG Video Audio Capture Motion Detection ShowClock Set Resolution Set Compression Set FPS Flip 1x DI Capture 1x DO Trigger Auto-Discovery	
Trendnet	TV-IP612		H264, MPEG4, and JPEG Video Capture Audio Capture Motion Detection Set Resolution Set Compression Set Codec Set FPS Flip Pan/Tilt/Zoom Preset Set, Recall, Delete 2x DI Capture 1x DO Trigger	
Sony	sonysncch120 sonysncch140 sonysncch160 sonysncch180 sonysncch220 sonysncch240 sonysncch260 sonysncch280	sonysncdh120 sonysncdh140 sonysncdh160 sonysncdh180 sonysncdh220 sonysncdh240 sonysncdh260 sonysncdh280	Added "Magic Focus" support	
LevelOne	FCS-0030 FCS-0031 FCS-1121	FCS-1122 FCS-3061 FCS-5041	H264, MPEG4, and JPEG video Capture Audio Capture Motion Detection Show Clock Set Resolution Set Compression Set Codec Set FPS Flip 1xDI Capture 1xDO Trigger	

Camera Mfg.	Models		Supported Features	Notes
LevelOne	FCS-3091		H264 and JPEG video capture Audio Capture ShowClock Set Resolution Set Compression Set Codec Set FPS 4xDI Capture 1xDO Trigger	
LevelOne	FCS-1131 FCS-1141 FCS-3071	FCS-3081 FCS-5051	H264 and JPEG video capture Audio Capture Motion Detection Show Clock Set Compression Set FPS Flip 1xDI Capture 1xDO Trigger	
LevelOne	FCS-1151		H264, MPEG4, and JPEG Capture Audio Capture Motion Detection Showclock Set Resolution Set Compression Set FPS Flip Set Contrast Set Saturation Set Brightness Set Sharpness 1xDI Capture 1xDO Trigger	
VCS	VideoJet		MPEG4 and JPEG Video Capture Motion Detection ShowClock Set Resolution Set Compression Set FPS 1x DI Capture 1x DO Trigger Pan, Tilt, Zoom, Focus, Iris Preset, Set, Add, Delete Auto-Discovery	Audio not currently supported.

Camera Mfg.	Models		Supported Features	Notes
ONVIF	All ONVIF supported cameras		Updated ONVIF support: Video Capture Audio Capture WebClient JPEG Auto-Discovery	*Only ONVIF version 1.02 is currently supported * Added ability to select different streams via the Camera Number
Ubiquiti	airCam airCam Mini	airCam Dome	H264 and JPEG Video Capture Audio Capture Webclient JPEGs Auto-Discovery	
DVTel	CF-1101 CF-3111 CF-4121 CM-2101 CM-3211 CM-4221 CP-2101	CF-2101 CF-3200 CM-1101 CM-3111 CM-4021 CP-1101	H264 and JPEG Video Audio Capture Video Timestamp Set Quality Set FPS Flip 1x DI Capture 1x DO Trigger Pan/Tilt/Zoom/Focus/Iris Preset Recall/Add/Delete	
XTS	XTS-BC1.3 XTS-BC5MP XTS-BCVGA XTS-BU2MP XTS-BU540 XTS-BUVGA XTS-MDI1.3 XTS-MDIVGA XTS-MDVP1.3 XTS-MDVP2MP XTS-MDVP5MP XTS-MDVP540 XTS-SD10X XTS-SD18X	XTS-BC2MP XTS-BC600 XTS-BU1.3 XTS-P1800 XTS-P2600 XTS-P3600 XTS-PTZ1800 XTS-PTZ2600 XTS-PTZ3600 XTS-NVS-1 XTS- NVS-11 XTS- NVS-11A XTS-SD26X XTS-SD36X	H264, MPEG4, and MJPEG Video Capture Audio Capture Motion Detection 1x Digital Input Capture 1x Digital Output Trigger Pan/Tilt/Zoom/Focus Preset Recall/Set/Delete Auto-Discovery	No support for Codec, Resolution, Quality, or FPS changes due to XTS SDK crashing issues. The encoders and ptz cameras may need to be manually set to stream Video over RTSP.
Vivotek	2000 Series		MJPEG Video Capture Motion Detection Set Resolution Set Quality Set FPS 1x DI Capture 1x DO Trigger Pan/Tilt/Zoom/Focus Preset Set/Recall/Delete	

Camera Mfg.	Models	Supported Features	Notes	
Panasonic	WV-SC384 WV-SC386 WV-SF132 WV-SF135 WV-SP508 WV-SP509 WV-ST162 WV-ST165, WV-SW152	WV-SW155 WV-SW172 WV-SW175 WV-SW314 WV-SW316 WV-SW395 WV-SW396 WV-SW558 WV-SW559	H264 and JPEG video Audio Capture Motion Detection Show Clock Set Resolution Set Quality Set FPS Flip 3x DI Capture 1x DO Trigger Pan/Tilt/Zoom/Focus/Iris Preset Set, Recall, Delete Auto-Discovery WebClient JPEG	
General	RTSP session timeout fix	The RTSP/RTP-over-TCP Session Timeout mechanism was failing in cases where the session timeout was greater than 60 seconds (rare).		

B. Video Communication Systems (VCS) Integration

There are two generations of VCS Cameras/Encoders:

I) Generation 1 - MPEG4/MJPEG

Cameras included are Pelco NET300T and NET350T, DVTel 9501, and all Bosch cameras and encoders with firmware less than 3.50. In our software this generation is supported by the Pelco NET300T and NET350T, DVTel 9501, Bosch Legacy, and VCS MPEG4 camera models.

These cameras use the Bosch PTZ Protocol for all Bosch branded cameras, and the Pelco-P Protocol for all non-Bosch branded cameras.

II) Generation 2 - H264/MPEG4/MJPEG

This generation consists only of Bosch cameras and encoders with firmware greater than or equal to 3.50. In our software this generation is supported by all of the Bosch models, except Bosch Legacy, and the VCS H264 camera model.

These cameras use the Bosch PTZ Protocol for all Bosch branded cameras, and the Pelco-D Protocol for the VCS H264 camera model.

PTZ Addresses for VCS cameras:

If you have a Bosch encoder and you would like to use a Pelco PTZ protocol, then you may select the VCS MPEG4 model to use the Pelco-P protocol, or the VCS H264 model to select the Pelco-D protocol. Also all of the Non-Bosch Generation 1 cameras use the Pelco-P protocol. To configure the Pelco-P or Pelco-D PTZ addresses please refer to the following table of camera numbers:

Camera Number	Video Input Number	Video Stream Number	PelcoPTZ Address
1	1	1	D = 0 P = 1
2	2	1	D = 0 P = 1
3	3	1	D = 0 P = 1
4	4	1	D = 0 P = 1
5	1	2	D = 0 P = 1
6	2	2	D = 0 P = 1
7	3	2	D = 0 P = 1
8	4	2	D = 0 P = 1
9	1	1	D = 1 P = 2
10	2	1	D = 1 P = 2
11	3	1	D = 1 P = 2
12	4	1	D = 1 P = 2
13	1	2	D = 1 P = 2
14	2	2	D = 1 P = 2

15	3	2	D = 1 P = 2
16	4	2	D = 1 P = 2
17	1	1	D = 2 P = 3
18	2	1	D = 2 P = 3
19	3	1	D = 2 P = 3
20	4	1	D = 2 P = 3
21	1	2	D = 2 P = 3
22	2	2	D = 2 P = 3
23	3	2	D = 2 P = 3
24	4	2	D = 2 P = 3
25	1	1	D = 3 P = 4
26	2	1	D = 3 P = 4
27	3	1	D = 3 P = 4
28	4	1	D = 3 P = 4
29	1	2	D = 3 P = 4
30	2	2	D = 3 P = 4
31	3	2	D = 3 P = 4
32	4	2	D = 3 P = 4
1 > N > 32	1	1	D = 0 P = 1

C. Camera probing using Ping

To use server processes more efficiently we added a PING function for the Brickcom, Basler, and Vivotek 7000, and 8000 models.

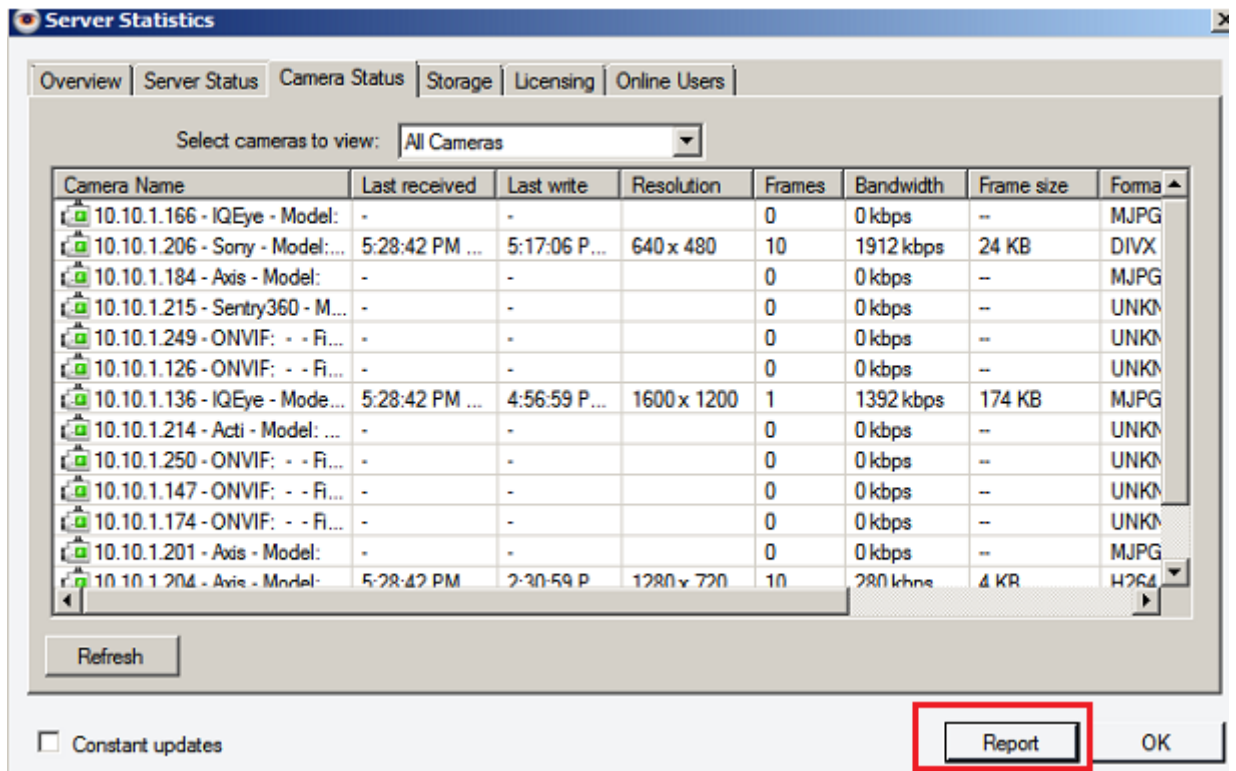
Previously, the server would wait for the camera to respond with the type of codec that is being used; that process was lengthy and sometime would just hang due to no response since that ip address no longer exists (camera may have been retired or removed from the server temporarily.)

The camera classes have been updated to first PING the cameras, before probing them. If the ping fails, then the default codec is selected and the server process now completes faster and more efficiently.

D. Ability to Export Camera List

In server status we added the ability to export all camera details for all managed servers or for a specific server. To use this feature:

1. Navigate to Setup and Configuration>Server Statistics
2. Select the Camera Status tab
3. From the “Select cameras to view:” dropdown select the server of your choice or simply leave the default:”All Cameras”

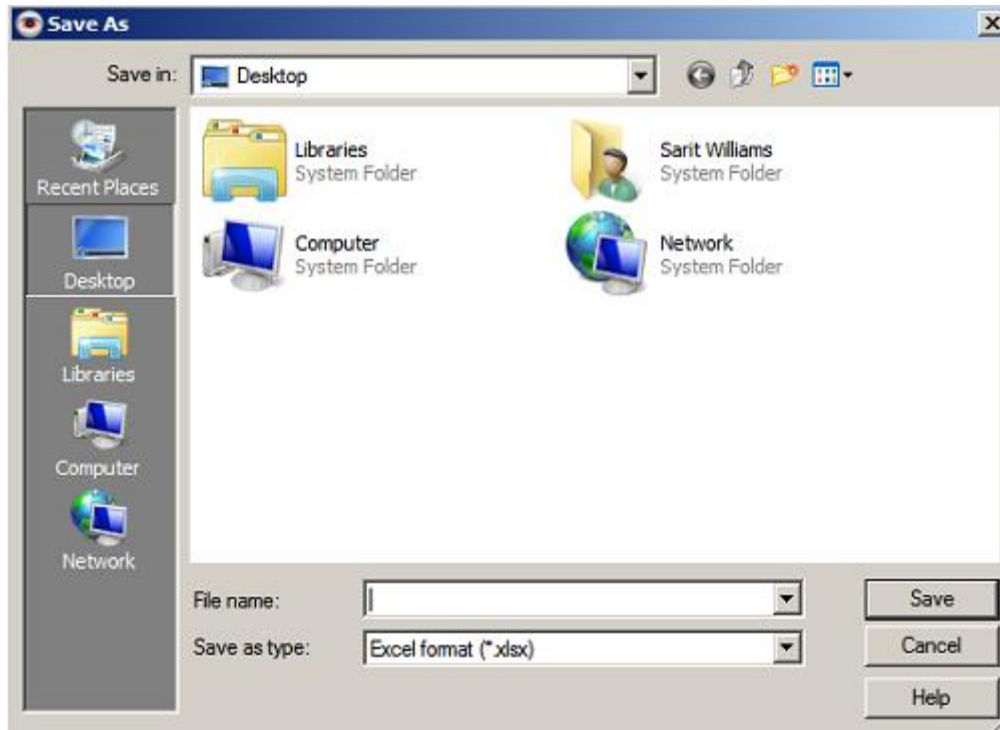


The screenshot shows the 'Server Statistics' window with the 'Camera Status' tab selected. A dropdown menu is set to 'All Cameras'. Below is a table of camera details:

Camera Name	Last received	Last write	Resolution	Frames	Bandwidth	Frame size	Format
10.10.1.166 - IQEye - Model:	-	-		0	0 kbps	--	MJPG
10.10.1.206 - Sony - Model:...	5:28:42 PM ...	5:17:06 P...	640 x 480	10	1912 kbps	24 KB	DIVX
10.10.1.184 - Axis - Model:	-	-		0	0 kbps	--	MJPG
10.10.1.215 - Sentry360 - M...	-	-		0	0 kbps	--	UNKN
10.10.1.249 - ONVIF: - - Fi...	-	-		0	0 kbps	--	UNKN
10.10.1.126 - ONVIF: - - Fi...	-	-		0	0 kbps	--	UNKN
10.10.1.136 - IQEye - Mode...	5:28:42 PM ...	4:56:59 P...	1600 x 1200	1	1392 kbps	174 KB	MJPG
10.10.1.214 - Acti - Model: ...	-	-		0	0 kbps	--	UNKN
10.10.1.250 - ONVIF: - - Fi...	-	-		0	0 kbps	--	UNKN
10.10.1.147 - ONVIF: - - Fi...	-	-		0	0 kbps	--	UNKN
10.10.1.174 - ONVIF: - - Fi...	-	-		0	0 kbps	--	UNKN
10.10.1.201 - Axis - Model:	-	-		0	0 kbps	--	MJPG
10.10.1.204 - Axis - Model:	5:28:42 PM	2:30:59 P	1280 x 720	10	280 kbps	4 KB	H264

At the bottom of the window, there is a 'Refresh' button, a checkbox for 'Constant updates', and a 'Report' button (highlighted with a red box) and an 'OK' button.

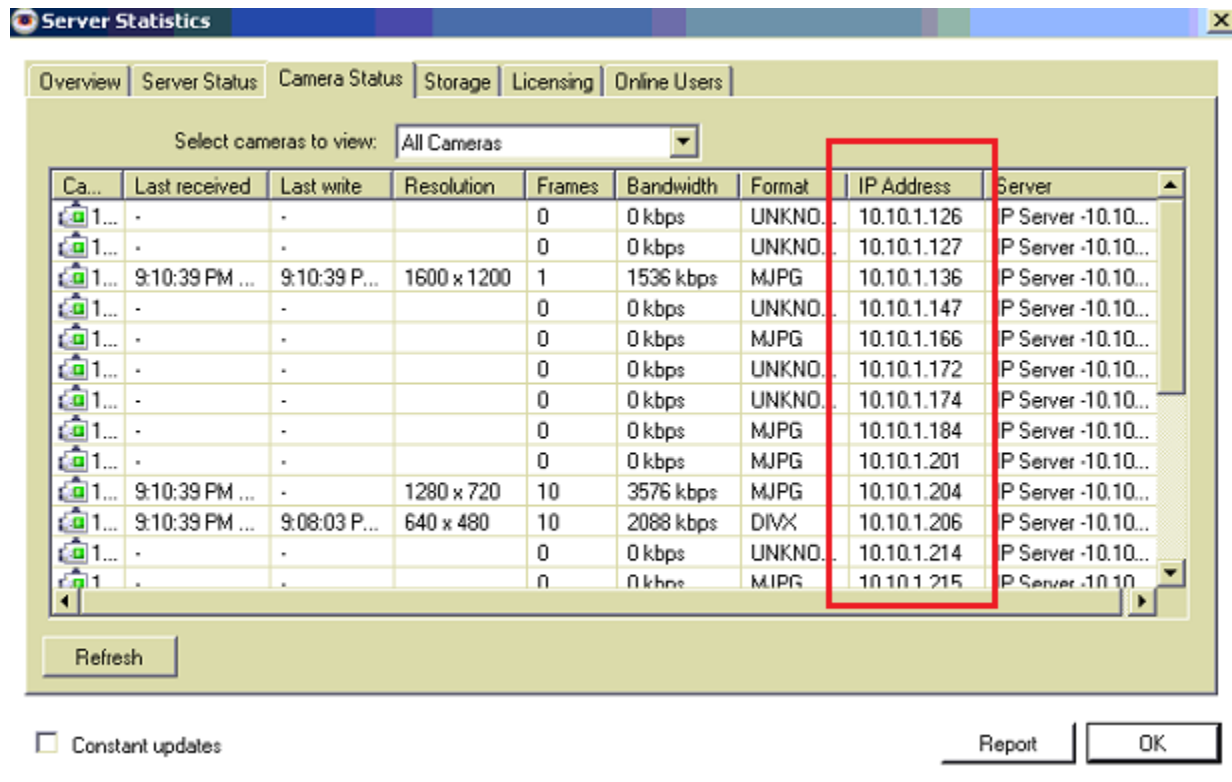
4. Click the new *Report* button



5. Enter a name for the file
6. Select the location to save the file to
7. Click Save

E. Server Statistics: New Camera IP Address field

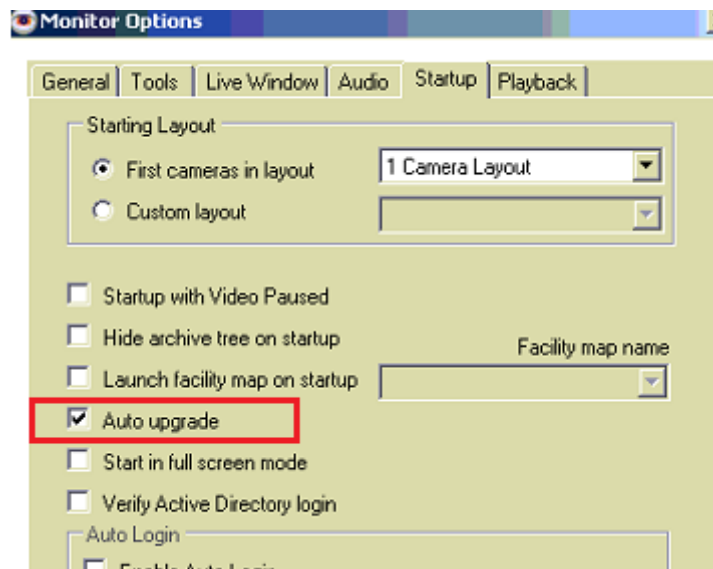
A new column named “IP Address” has been added to the Camera Status tab in Server Statistics as shown on the next page.



F. Auto Upgrade Will Now Default to Checked

Once build 5.0.0.18 is applied to both Servers and Monitor Stations the Auto Upgrade checkbox will immediately be updated to a True, or checked, status as shown below. Auto upgrade will automatically push the new version to all clients connected to the recently updated server.

This option is available in Tools>Options>Startup tab



G. Added a Tooltip to the Synchronized Player's Clip Option

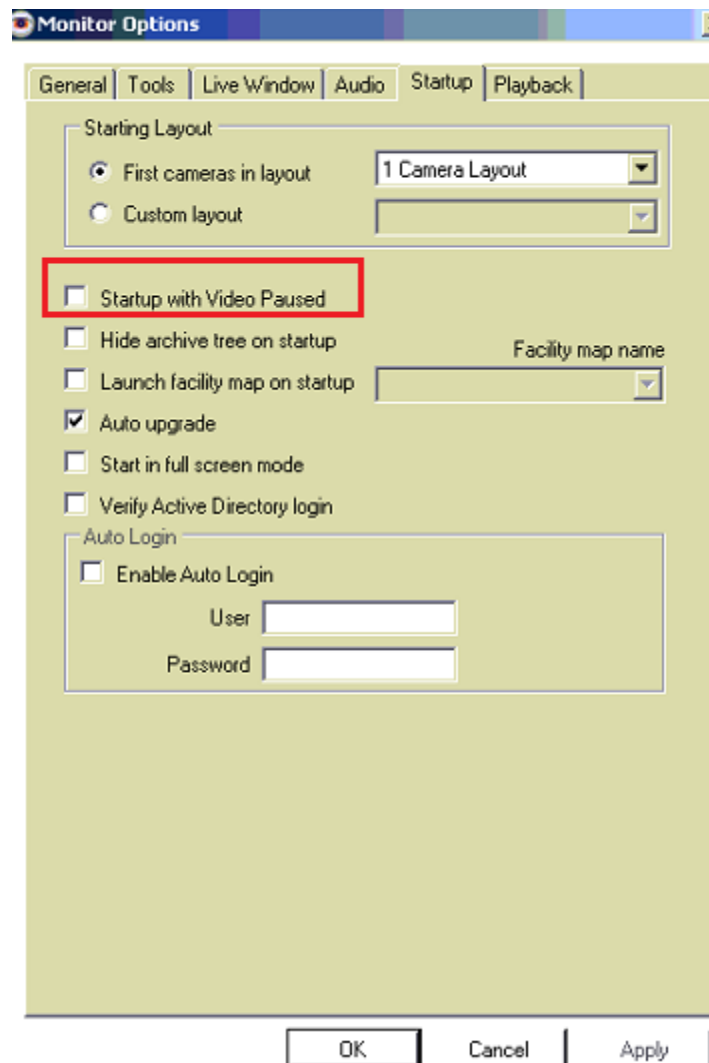
A new tooltip has been added to the Clip icon, when hovering over the icon it will show: "Export a Synchronized Video Clip" if clipping options are not available to a non-admin user the icon will not appear.

H. Importing Cameras from IP Version 3.x Option Has Been Removed

Previously users of IP version 3.x were able to import cameras from the legacy software to the latest 4.x or 5.x versions. Starting with this build any imports of 3.x into version 5.0.0.18 or higher will require Tech Support assistance if needed.

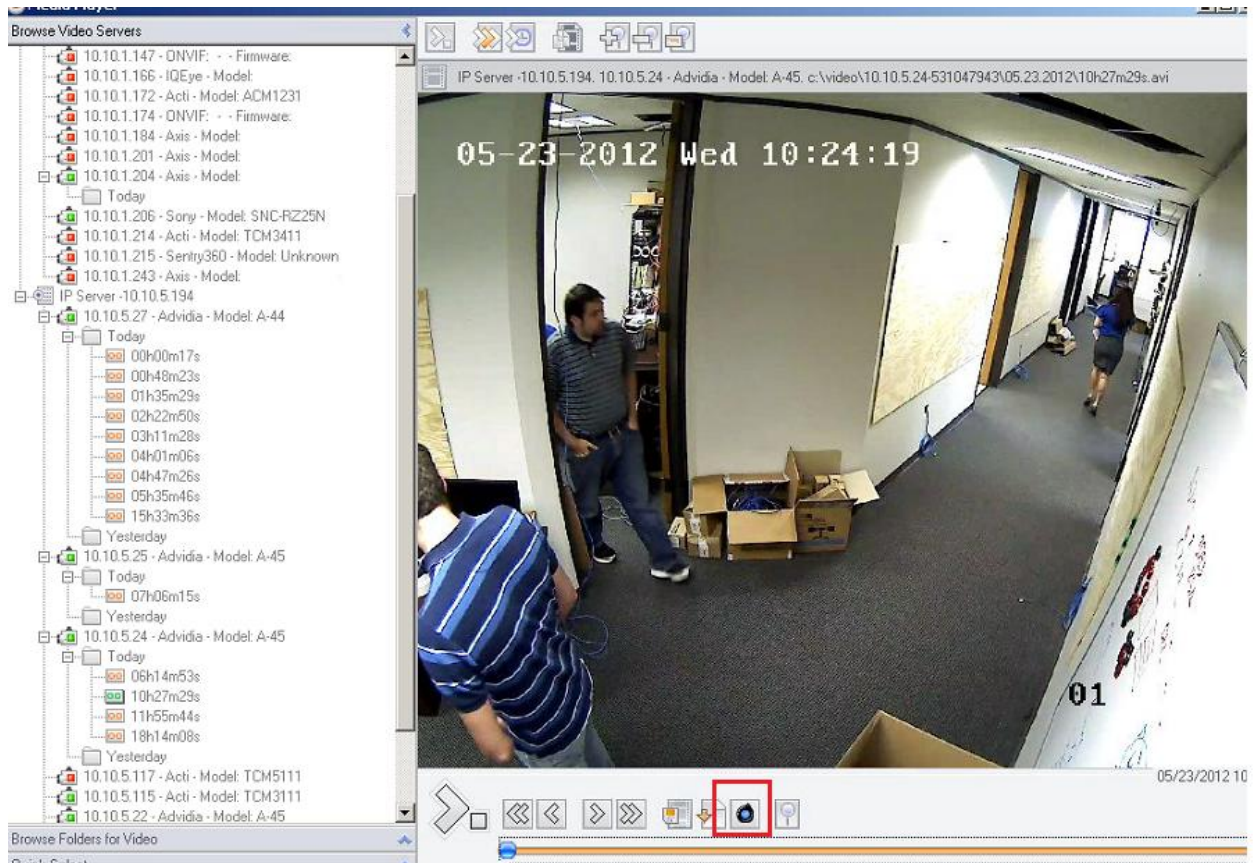
I. Option to Start Monitor Station with Paused Video

A new option has been added to Tools>Options>Startup tab. When checked Monitor Station will launch with paused video to expedite the startup process and reduce server processing when needed.



J. Snapshot Feature Added to Recorded Video

An icon was added to both Media Player and the embedded player available from the main Monitor Station playback view. In the event a snapshot image is needed of a particular frame from a recorded video to email or print, use the icon shown in red below.



Once clicked the following pop-up will appear:

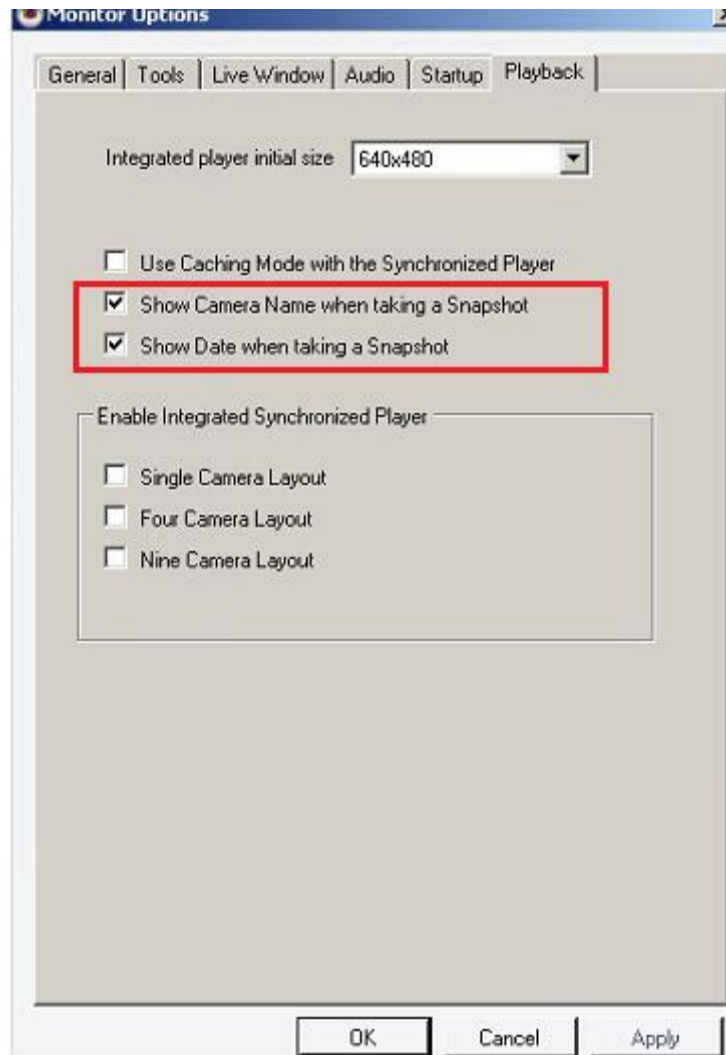


The image can be printed or saved to a location for later retrieval. Please note that regardless of the image size when manipulated (using zoom in/out buttons above) the camera resolution size will be used when printing the selected image.

K. Label Options Added to Snapshot Feature

In addition to the newly placed Snapshot icon, users now have the ability to add a couple of labels to that JPEG image. These options are checked by default.

1. Navigate to Tools>Options>Playback tab



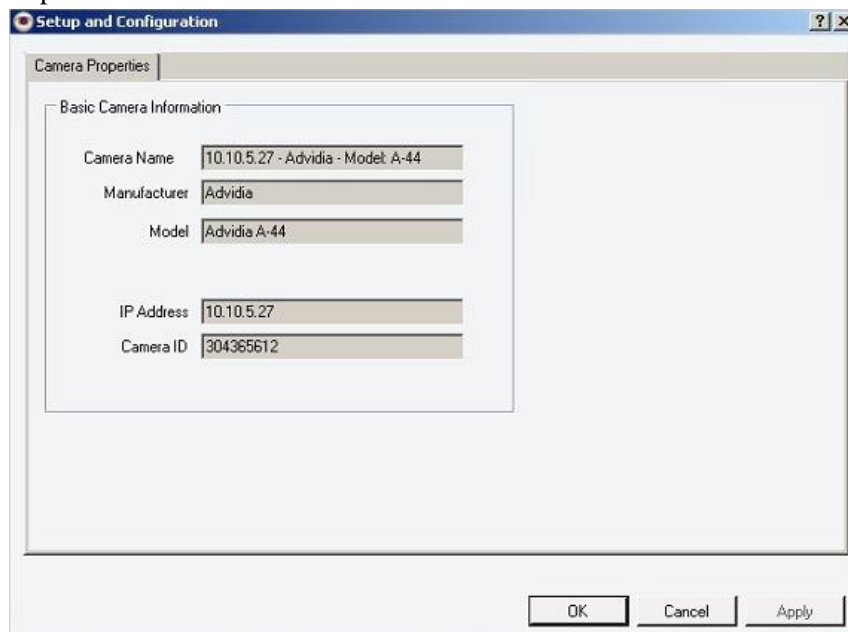
A sample is shown on the next page:



L. Non-Admin Users May View Limited Camera Properties

Previously only Administrator were able to view specific camera details when security was enabled., going forward non-admin users can now view limited camera properties.

1. Login as a non-admin user with access to view the particular camera
2. Right click the camera in the left node
3. Choose Properties

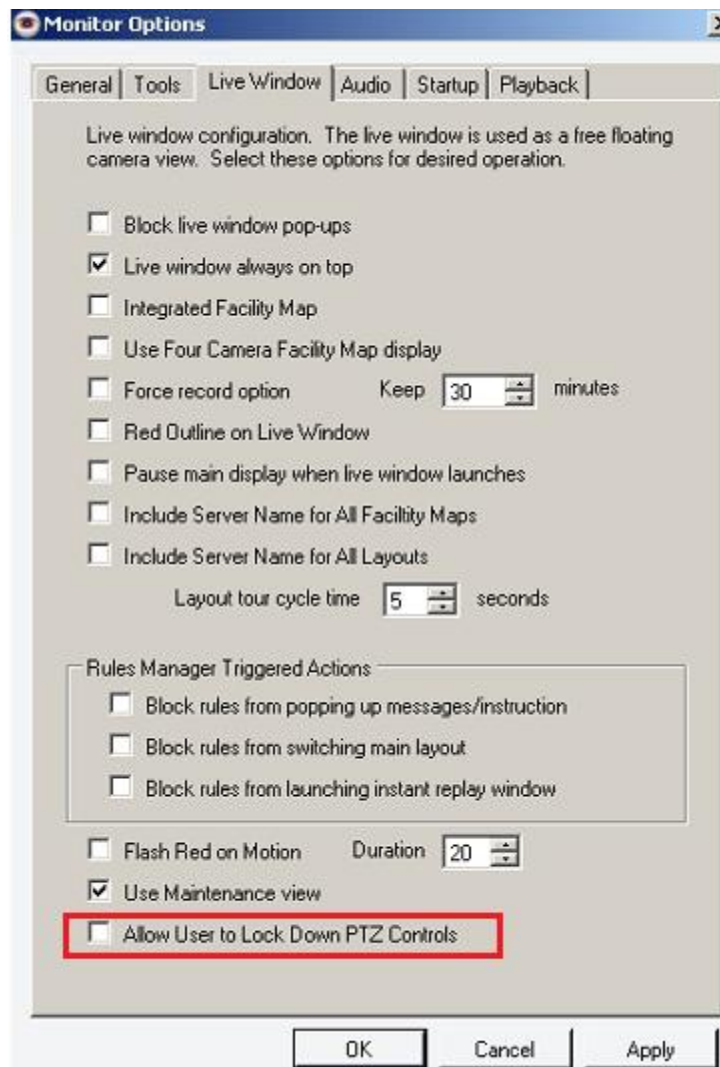


M. Non-Admin Users to Lock Down PTZ Controls

A new option has been added to the Options menu to allow non-admin users to disable PTZ on a camera. This option is especially useful when a security officer is viewing an event at a predefined preset or camera view; locking the camera temporarily will prevent other users from moving the camera and interfering with that investigation of the location.

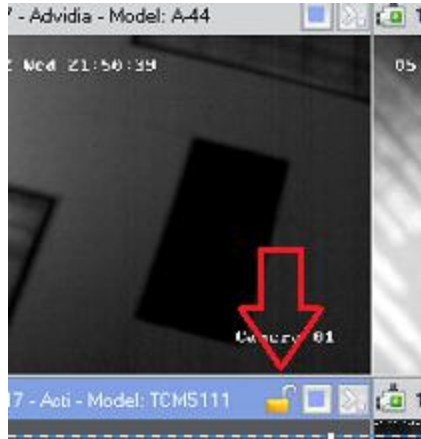
To enable it:

1. Navigate to Tools>Options>Live Window tab



2. Check the “Allow User to Lock Down PTZ Controls” checkbox (default is unchecked)
3. Click Apply
4. Click OK to close pop-up
5. Restart Monitor Station by clicking the Lock icon on the top left

- From Monitor Station's main view locate the PTZ camera to lock down, notice the unlocked icon in the Camera Toolbar:



- Move the camera to the desired preset or location
- Click the unlocked lock icon as depicted above



- Select Yes to Continue or No to Cancel
- The lock will now appear locked and the PTZ arrow cursor will no longer appear until the lock is removed by any user simply by clicking the lock again.



N. SDK Input Rule

There was a limitation in prior builds restricting the use of a specific SDK port to one Event and Action combination even if the desire was to use the same SDK port for multiple different actions.

One example of this use would be to use an SDK Input Event using Port #1 to send an email to groupA@company.com distribution list during normal business hours of 8-5 (by adding a schedule constraint to this rule.) The second action would be to create a second schedule with same Event but that sends an email to an AFTER hours group using the same exact SDK Port #1.

O. Two Way Audio Feature

The two way audio feature has been implemented for all Axis cameras that support this feature.

Prerequisites:

A microphone will need to be plugged in and enabled using Windows' "Volume Control Options" application.

Activate the two way audio feature from the camera's Web Interface.

Once activated follow these steps:

1. Navigate to Monitor Station
2. Select the applicable camera from the live view
3. Refer to the left navigation tree
4. Expand the Audio Controls and click the Microphone button there

Please note: if there isn't a microphone button in the Audio controls it is possible a prerequisite is missing or configured improperly.

Audio should now be perceptible from the speakers attached/built in to the PC running the Monitor Station and the camera itself.

Is there a feature you'd like to see implemented? Email us here:

<http://www.questionpro.com/akira/TakeSurvey?id=1028953>

Recommend an area or a feature for the Did You Know? Section to be covered in an upcoming issue:

swilliams@video-insight.com