

IP Enterprise version 5.0.34.3 Release Notes

Table of Contents

A.	New Camera Integrations and Updates.....	2
B.	Access Control New Rules Event	4
C.	Blackboard Access Control New Facility Map Feature.....	5
D.	Record 1 FPS Checkbox added logic.....	6
E.	Demo licensing is now 60 days.....	6
F.	Advanced Tab User Interface change	7
G.	Server Names	7
H.	Direct 3D Support	8

IP Enterprise version 5.0.34.3 Release Notes

Continuing with Video Insight's commitment to iterative development and continuous product improvements version 5.0.34.3 is ready for use.

A. New Camera Integrations and Updates

Camera Mfg.	Models	Supported Features	Notes
Basler	All models	Updated support for Webclient JPEG	When streaming JPEG video for the server or the webclient, our software will now only use the first available JPEG stream. If more than one JPEG stream is configured on a Basler Camera, the second, third, or fourth JPEG streams will not be accessible.
Mobotix	All models	Updated support: Added Audio support for MxPEG stream. Added improved Camera Side Motion Detection (CSMD) when streaming MxPEG	
JVC	VN-V685 VN-V686	MPEG4 and JPEG video Capture Motion Detectin Set Resolution Set Compression Set FPS 2x DI Capture 2x DO Trigger Pan/Tilt/Zoom Preset Set/Recall/Delete WebClient JPEG	
TGCC	TGCC ENC-100	H264 Video Capture AAC Audio Capture	All changes on device require an IP Service restart for our software to display latest configuration.
Canon	VB-M40 VB-M700 VB-M600 VN-H41 VB-H610 VB-H710	Updated H.264 support to use less CPU and memory.	

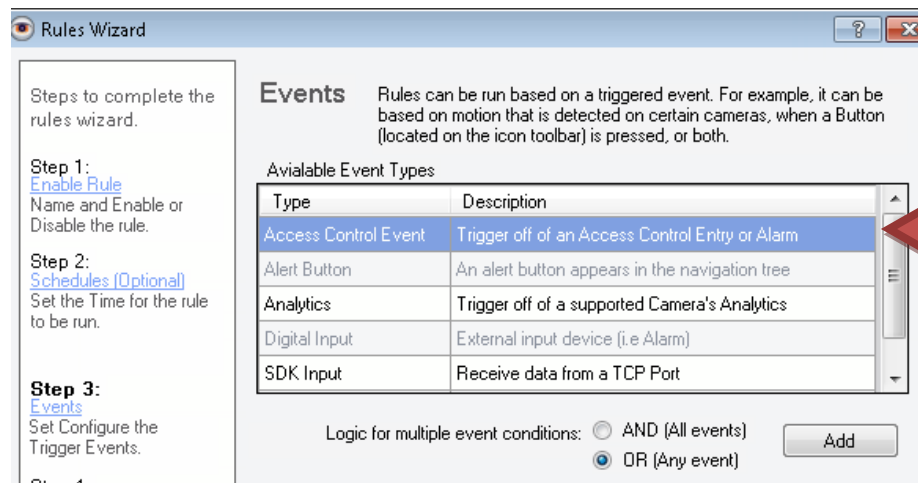
Infinova	H-Series		H264, MPEG4, JPEG Video Capture	
Bosch	Updated the following two camera names: NBN-489 -> NBN-498 NDN-489 -> NDN-498			
Interlogix	TVC-M1220-1 TVD-M2210V-2 TVC-M2220-1 TVD-M2225V-2 TVC-M3220-1 TVD-M3210V-2 TVC-M5220-1 TVD-M3225V-2 TVC-N220-1 TVD-M5225V-4 TVC-N240-1 TVD-N210W-4 TVD-M1210V-2 TVD-N210V-2 TVD-M1225V-2 TVD-N225E-2M TVD-M1245E-2M TVD-N245V-2		H264 Video capture Audio Capture Motion Detection 1x DI Capture 1x DO Trigger WebClientJPEG	
Axis	M3004 P1204 M3005 P1214 M3006 P3384 M300 Q7411		H264 and JPEG Video Capture Audio Capture (only P3384, Q7411) Motion Detection Set Resolution Set Compression Set FPS ShowClock 1x DI Capture 1x DO Trigger (only P1204, P1214, P3384, Q7411) Pan/Tilt/Zoom/Focus/Iris/Preset (only Q7411) Webclient JPEG Auto-Discovery	
IV&C	VS2101		MJPEG Video Capture Motion Detection Set Resolution Set Compression Set FPS 1x DI Capture Pan/Tilt/Zoom/Focus Preset Set/Recall/Delete WebClient JPEG	
Brickcom	CB-302 MD-500 CB-502 OB-302 MD-300 VD-300		H264, MPEG4, and JPEG Video Capture Audio Capture Motion Detection Show Clock Set Resolution Set Compression Set Codec Set FPS Flip	

		1x DI Capture 1x DO Trigger WebClient JPEG Auto-Discovery	
Toshiba	IK-WP41A	H264 and JPEG Video Capture Motion Detection Set Resolution Set Compression 6x DI Capture Pan/Tilt/Zoom/Focus/Iris Preset Set/Recall Webclient JPEG	
UDP	NVC/ NVCL	Updated support: the device will restarts if no video has been received for 10 minutes.	
Messoa	All models	Audio support has been restored.	

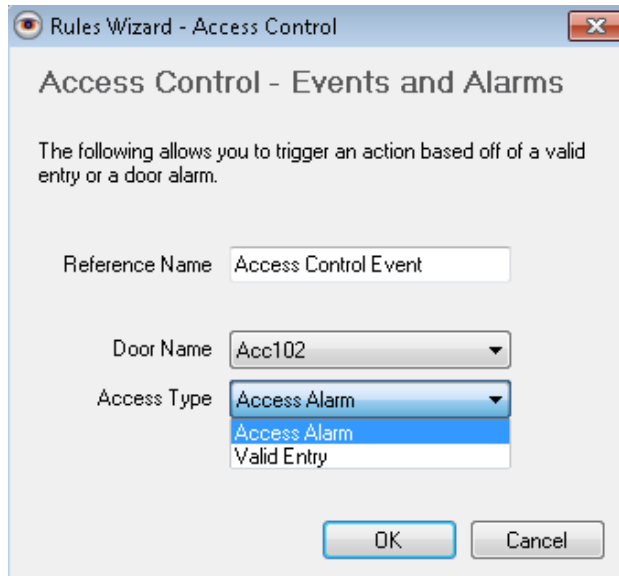
B. Access Control New Rules Event

A new Event was added to the Rules Manager that can be used to trigger a myriad of Actions based on a Access Control card swipe.

1. Navigate to Rules Manager in Setup and Configuration
2. Choose Server from Server dropdown
3. Name the rule
4. Enter a schedule, if desired
5. Click Next



6. Double Click the "Access Control Event" event.



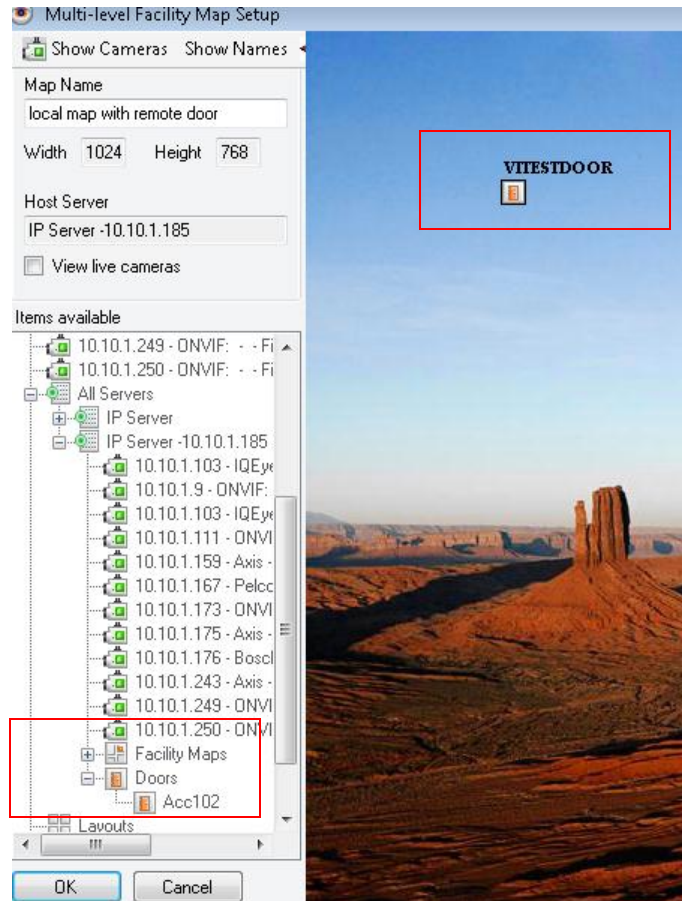
7. Enter a Reference Name
8. Select Access Type of “Valid Entry”
9. Click OK
10. Click Next to enter your desired Actions.

C. Blackboard Access Control New Facility Map Feature

A new feature has been added that allows the user to add access doors from several different servers that are added to the client, regardless if it is a shared database environment or not.

In order for the feature to appear all servers with the applicable doors should be added to the same Monitor Station(s) client and the assumption is made that the doors are configured with cameras.

1. Create a new Facility map (choose any one of the servers)
2. In the Create Facility Map view expand the Servers node



Notice the *Doors* node above, it is displaying ALL doors from the second server. In addition, the map on the right is showing the local server's door.

Also, if an access alarm is triggered by a card swipe the Access View will show ALL doors on the map in the dropdown for easier navigation.

D. Record 1 FPS Checkbox added logic

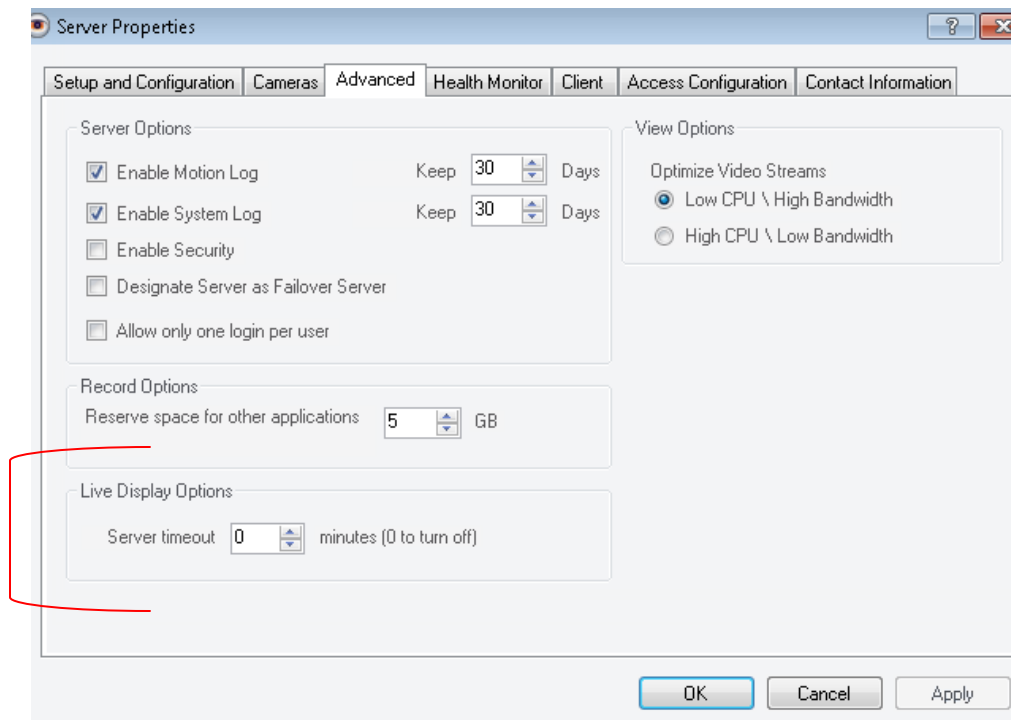
This checkbox, available in each camera's *Record* tab, will now appear disabled whenever a camera's Recording Type is anything other than Motion Only. This check box was initially intended as a way to capture all events (recording 1 frame per second only) when the camera is set to Motion Only to ensure no motion events are missed.

E. Demo licensing is now 60 days

Going forward all DEMO type of activations will be 60 days in length. For those customers who have activated the 180 days demos in the past: if demo days greater than 60 remain your number of available days will *not* decrease unless Update Activation in Server manger is clicked. On the other hand, if you have 23 days remain and Update Activation is clicked, your trial may or may not increase depending on the Demo Start date.

F. Advanced Tab User Interface change

The Advanced tab in Server Properties was modified as follows:



The Server timeout option was moved from Server Options to its own section named: Live Display Options.

G. Server Names

Going forward adding server names with the following characters: <, > will be prevented.

H. Direct 3D Support

A new sharper, cleaner image will appear when using Direct 3D on the client to view the footage.

