

5.5.12 Release Notes

Table of Contents

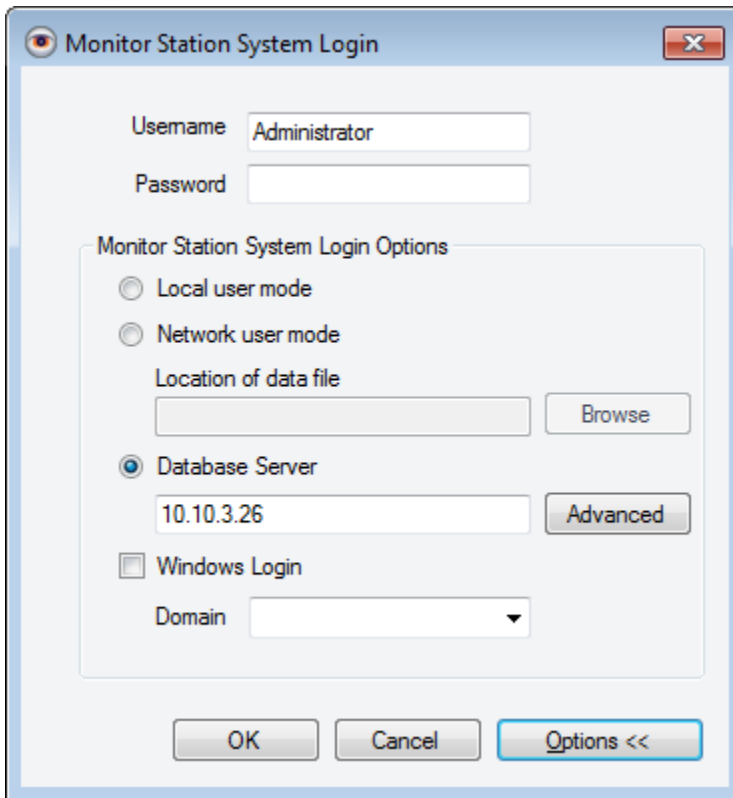
Overview	1
New Features	2
New Login Option	2
New Search Feature.....	3
Allow Users to setup all camera settings when adding the camera	4
Server Statistics Changes	7
New Cameras	8
Advidia A-14/A-15.....	8
Advidia B-33	9
DLink	9
GE GEC-IPDRH-DW-POE	10
ISD JBF-AF-1080P/JBF-CS-1080P	10
LiveU Integration.....	11
Sentry360 IS-DM240	11
Sentry360 FullSight IP 4180	11
Sentry360 FullSight IP 8180	12
Siqua Cameras	12
Panasonic Cameras	13
Speco OnSIP Cameras	13

Overview

5.5.12 contains bug fixes from 5.5.10.6 including web client, streaming methods, camera side motion detection changes. It has also been given quite a few features and all of the cameras that were also added to 5.0.40.

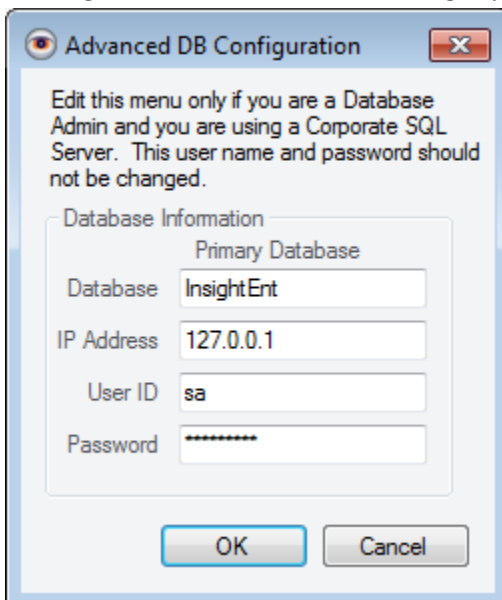
New Features

New Login Option



This will connect to the database server, gather all server information and put them all in the list of servers.

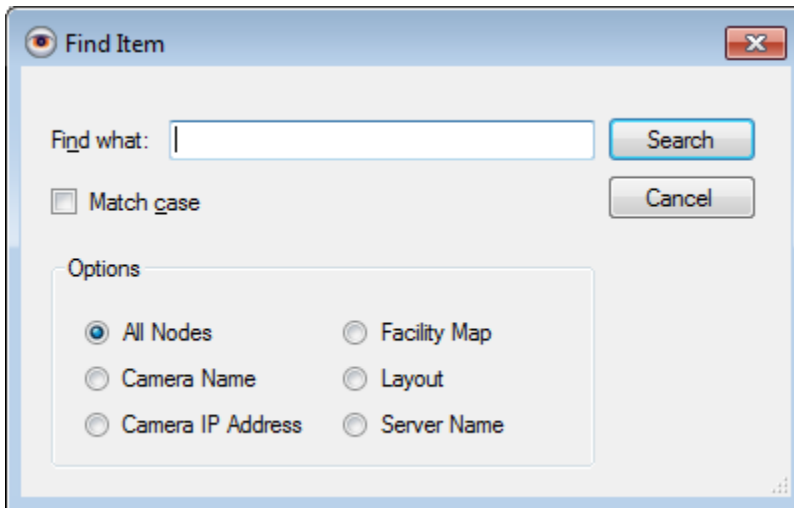
Clicking on the advanced button brings up this:



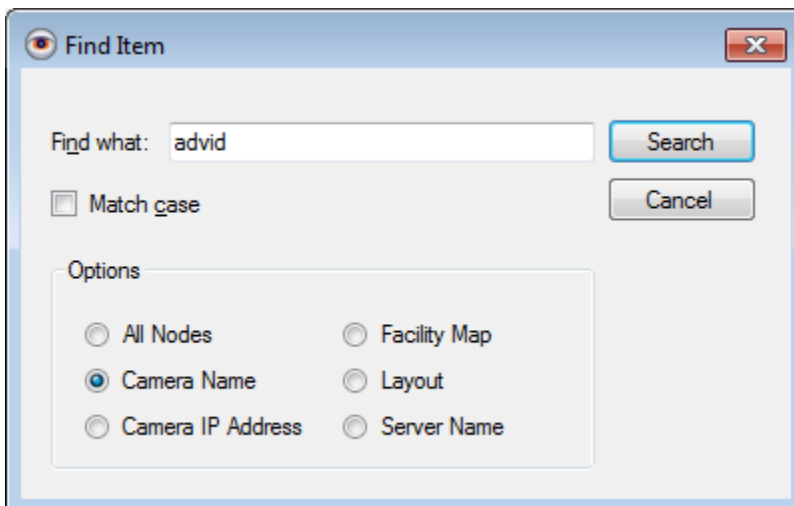
This will allow you to change the credentials for SQL.
All of this information is stored in the Registry and is encrypted.

New Search Feature

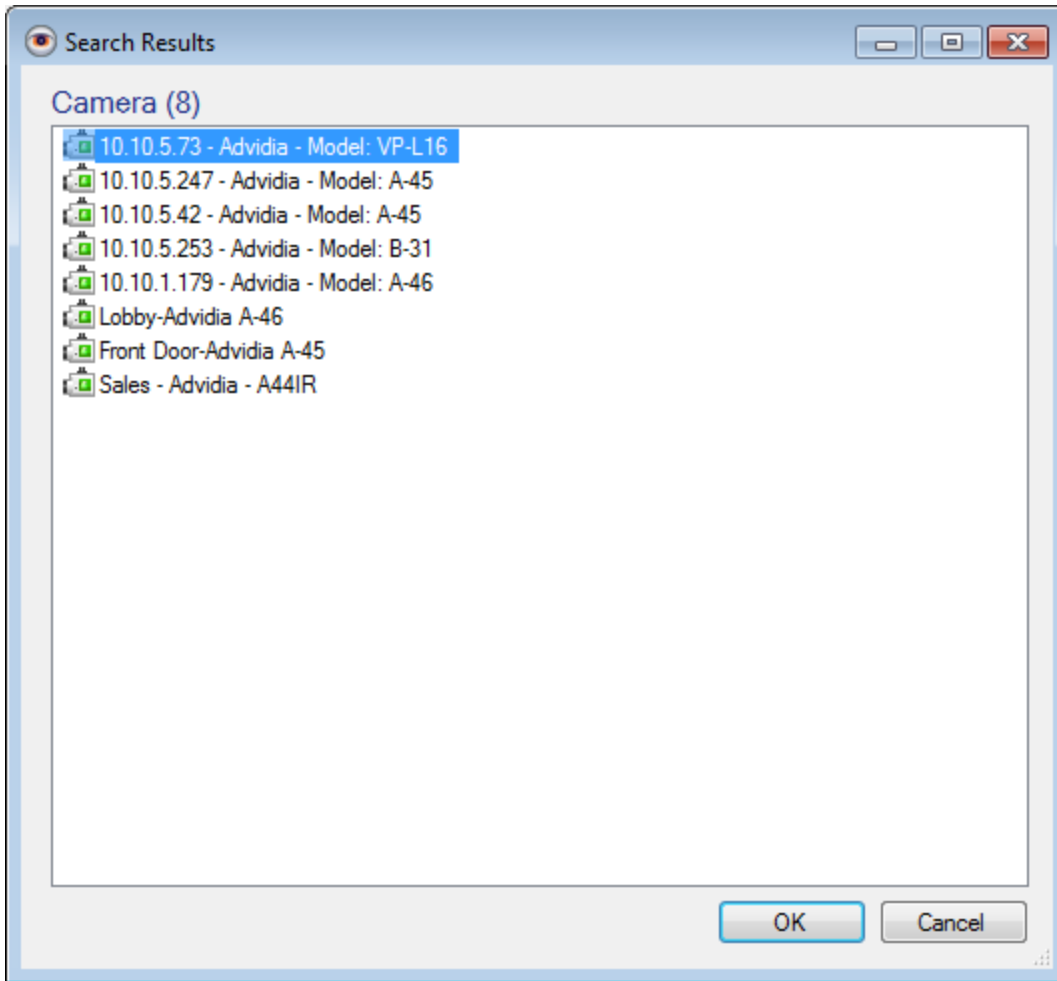
From the Monitor Station, hit <Ctrl> - F (which is a Microsoft standard) and it will pop-up this dialog. You can also get to it by going to Tools->Search.



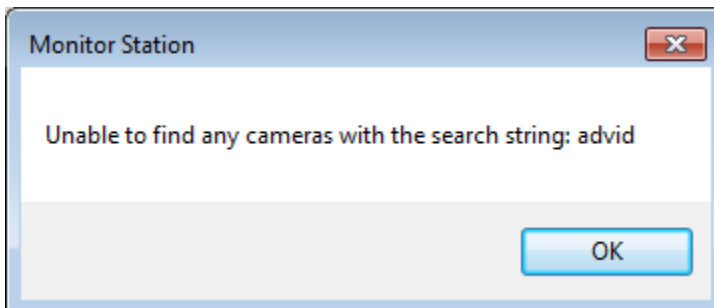
You can then enter the text of a node in the left navigation tree to search for.



And get this result.



With the Match case option checked you get this result:



If there is only one option to find, the Search box will close and that option will be highlighted in the Left Tree.

Allow Users to setup all camera settings when adding the camera

When doing a manual add of a camera we have added a Details button

New Camera

General

Camera Name:

Camera Information

Manufacturer:

Model:

IP Address:

User Name:

Password:

Shared IP Address
Camera Number:

Alternate Ports

HTTP: FTP:

RTSP:

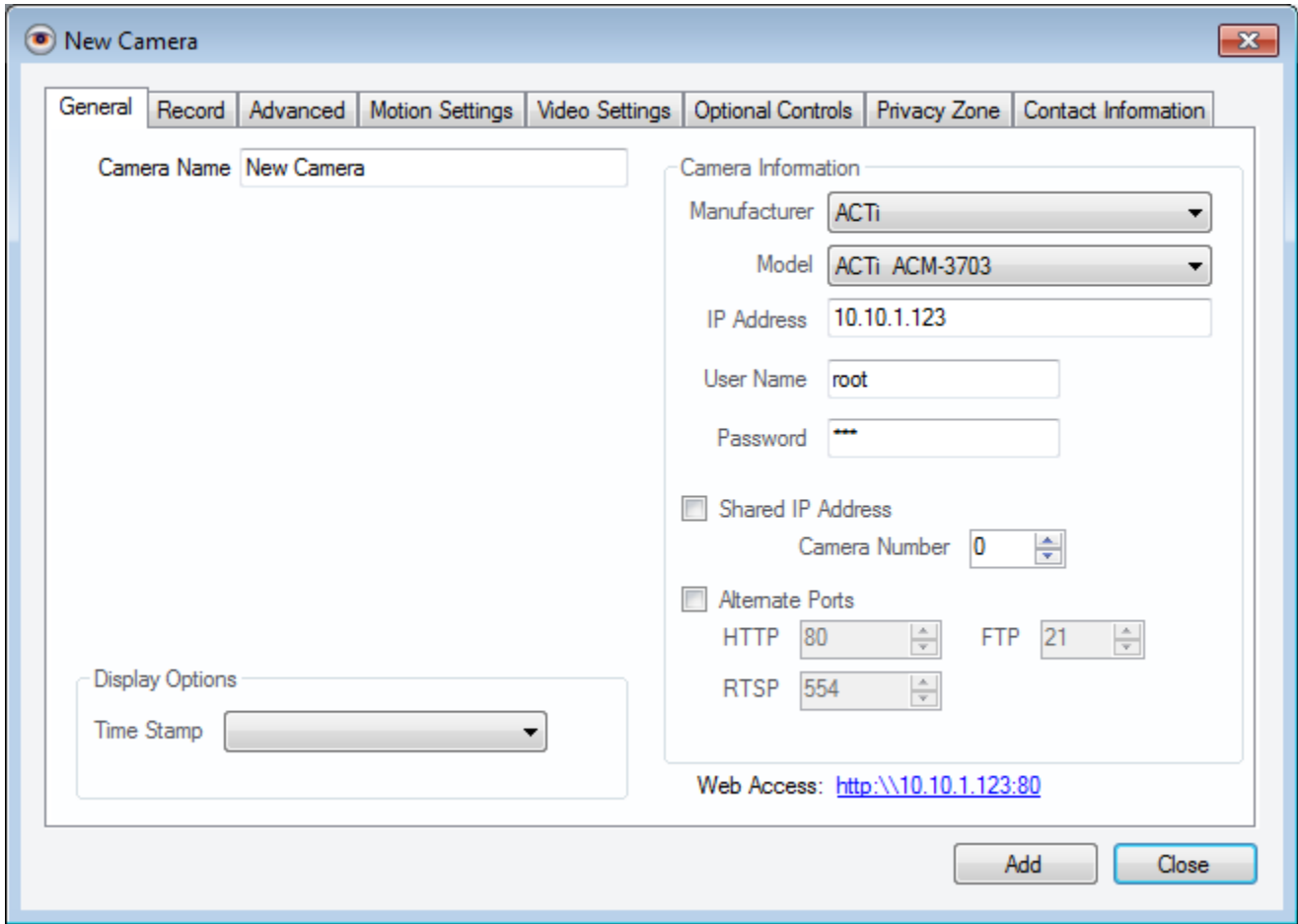
Display Options

Time Stamp:

Web Access: <http://10.10.4.79:80>

Details **Add** **Close**

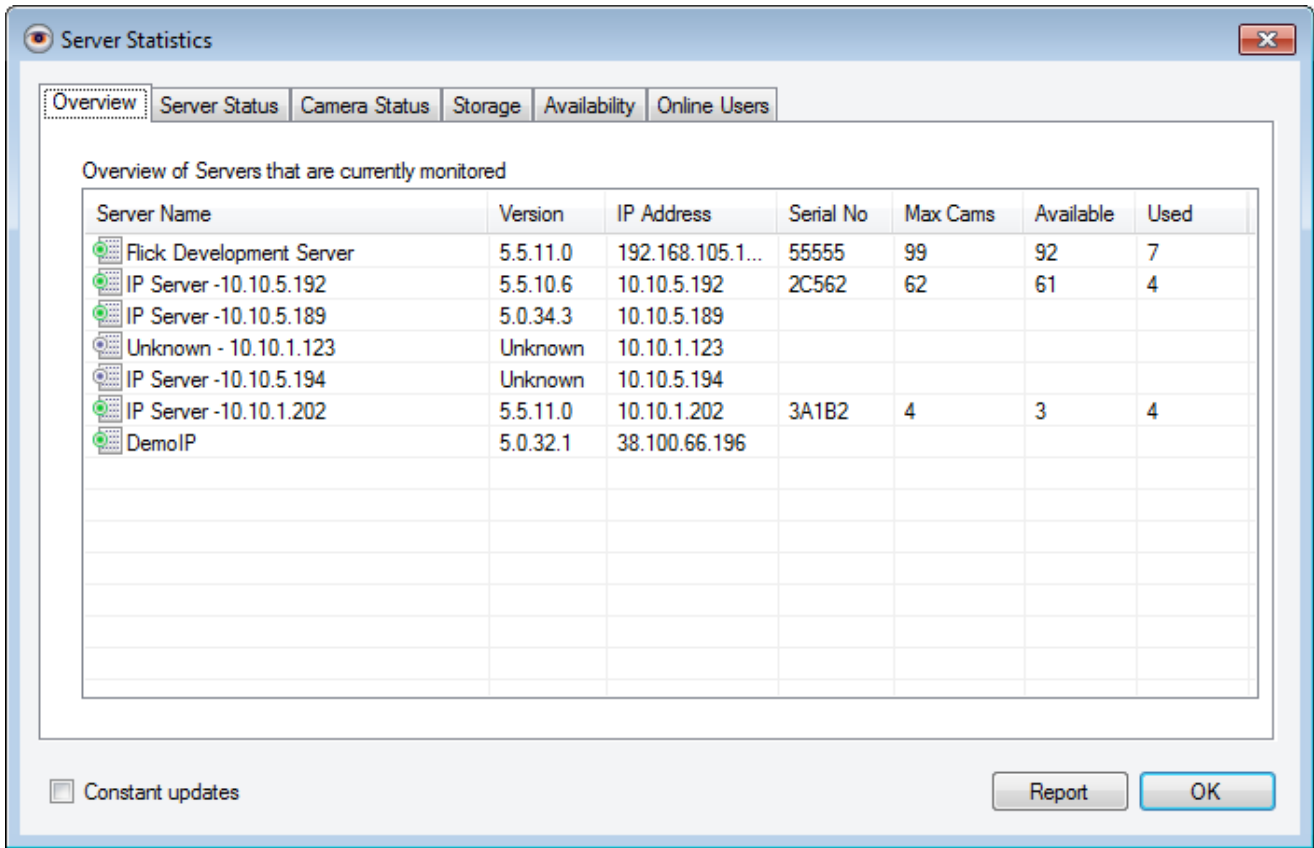
Clicking that details button gives you this:



You can now go through and set your Record Parameters and other configuration options.

Server Statistics Changes

Some of the information that was on the License Tab was moved over to the Overview Tab. I also removed the Port, which didn't really fit.



The Availability Tab is a new tab that queries each server for information in the System Log. This information is based on Initialization and Board Close messages. If additional information is

Advidia B-33

This camera supports the following features:

- H264, MPEG4, and JPEG Video Capture
- Audio Capture
- Motion Detection
- Show Clock
- Set Codec
- Set Resolution
- Set Compression
- Set FPS
- Flip
- 2x DI Capture
- 2x DO Trigger
- Zoom
- Magic Focus
- Webclient JPEG
- Auto-Discovery
- Zero-License

DLink

- DCS-2132
- DCS-6010
- DCS-6210
- DCS-6915
- DCS-7010
- DCS-7413
- DCS-7513

These cameras support the following features:

- H264, MPEG4, and JPEG Video Capture
- Audio Capture
- Motion Detection
- Show Clock
- Set Resolution
- Set Compression
- Set Codec
- Set FPS
- Flip
- 1xDI Capture
- 1xDO Trigger
- Pan/Tilt/Zoom

Magic Focus
Preset Add/Delete/Recall
Webclient JPEG

Note:

The DCS-6010 is a Fisheye camera that supports camera side dewarping.
Only the DCS-6915 supports PTZ.
Only the DCS-7513 supports magic-focus.

GE GEC-IPDRH-DW-POE

This is an OEM of the ACTi ACM-7511.

This camera supports the following features:

MPEG4 and JPEG Video Support
Audio Support
Motion Detection
Show Clock
Set Resolution
Set Compression
Set Codec
Set FPS
Flip
1x DI Capture
1x DO Trigger

ISD JBF-AF-1080P/JBF-CS-1080P

These cameras support the following features:

H264 and JPEG Video Capture
Motion Detection
Set Resolution (H264 Only)
Set Compression (H264 Only)
Set FPS (H264 Only)
Auto-Discovery
WebClient JPEG

Note: The camera manufacturer has promised to update the camera and API to support some of the following features, sometime in the future:

Audio Capture

- Codec Configuration
- Magic Focus
- MJPEG Resolution/Compression/FPS
- DI/DO

LiveU Integration

This integration supports the following features:

- H264 Video Capture
- Audio Capture (AAC)

Notes:

- Users should configure the LiveU so that it has a small GOP.
- Only RTSP/RTP-over-UDP is supported.

Sentry360 IS-DM240

This camera supports the following features:

- H264 and MJPEG Video Capture
- Audio Capture
- Motion Detection
- ShowClock
- Set compression
- Set FPS
- Flip
- 1x DI Capture
- 1x DO Trigger
- Pan/Tilt/Zoom/Focus/Iris
- Preset Set/Add/Delete
- WebClient JPEG

Sentry360 FullSight IP 4180

This camera supports the following features:

- H264, MPEG4, and MJPEG video capture.
- Audio Capture
- Motion Detection
- Show Clock
- Set Compression

- Set FPS
- Flip
- 1x DI Capture
- 1x DO Trigger

Notes:

This camera is a 180° camera that is not dewarped inside Video Insight. The image is a predefined crop sent from the camera.

Sentry360 FullSight IP 8180

This camera supports the following features:

- H264 and MJPEG Video Capture
- Motion Detection
- Set Resolution
- Set Compression

Notes:

This camera is a 180° camera that is not dewarped inside Video Insight. The image is a predefined crop sent from the camera.

Siqura Cameras

- BC62
- BC820
- BC820H1
- BL820M1IR
- CD820F1
- CD820F2
- FD62
- FD64
- FD820
- HSD820H1
- IFD820VIR

These cameras support the following features

- H264 and JPEG Video Capture
- Audio Capture
- Motion Detection

- Show Clock
- Set Compression
- Set FPS
- Flip
- 1x DI Capture
- 1x DO Trigger
- Pan/Tilt/Zoom/Focus/Iris
- Preset Add, Recall, Delete

Panasonic Cameras

WV-SF438

WV-SF458

These cameras support the following features:

- H264 and JPEG Video Support
- Audio Support
- Motion Detection Support
- Show Clock
- Set compression
- Set FPS
- 3x DI Capture
- 1x DO Trigger
- Pan/Tilt/Zoom
- Preset Set/Add/Delete
- Auto-Discovery
- Web Client JPEG

Note:

These are 360 Degree cameras,
I recommend that they be operated in Single Channel PTZ mode (dewarped)
rather than fisheye mode.

Speco OnSIP Cameras

OB1
OD8
OIPC21T7
OIPC22T7
OIPC72B7
OINT03D1
OINT56B1
OPTZ36XI
OPTZ36XO

These cameras support the following features:

H264 and JPEG Video Capture
Audio Capture
Motion Detection
Show Clock
Set Codec
Set Resolution
Set Compression
Set FPS
Flip
1x DI Capture
1x DO Trigger
Pan/Tilt/Zoom/Focus/Iris
Preset Set/Recall/Delete
WebClient JPEG