

5.5.14 Release Notes

Contents

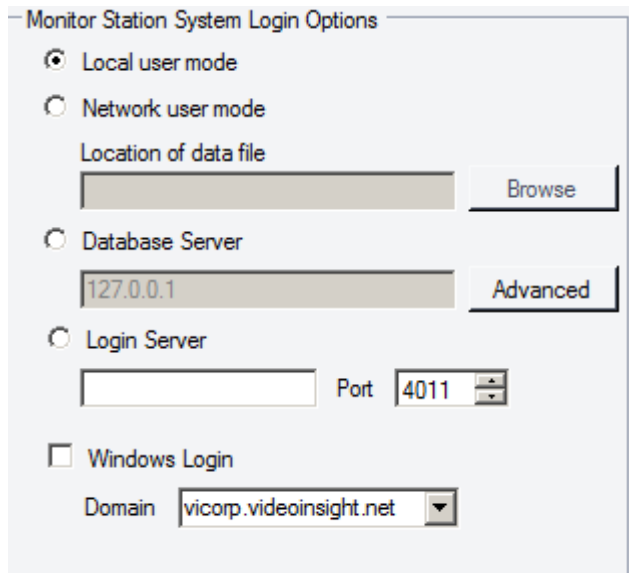
Overview	1
New Features:	2
New Monitor Station Login Option.....	2
Direct X Support Updates	3
Connection Profiles.....	4
HTTP Command Rules Action	7
HTTP Listener	7
Camera Integration.....	8
New Cameras	8
Axis P33 Cameras	8
Cisco IPC 2600 Camera Series	9
Dahua PTZ Support	9
GKB Generic RTSP Camera	10
OnCam Evolution Series.....	11
New Camera Features.....	12
Axis Magic Focus	12
Mobotix Digital Input Support	12
Panasonic Motion Zone Support	13
SightLogix VCA Support.....	13

Overview

5.5.14 allows customers to create their Connection Profiles inside the Monitor Station, use a Login Server to access multiple Servers, send HTTP commands to software and hardware. We have also added additional cameras and features to existing manufacturers.

New Features:

New Monitor Station Login Option

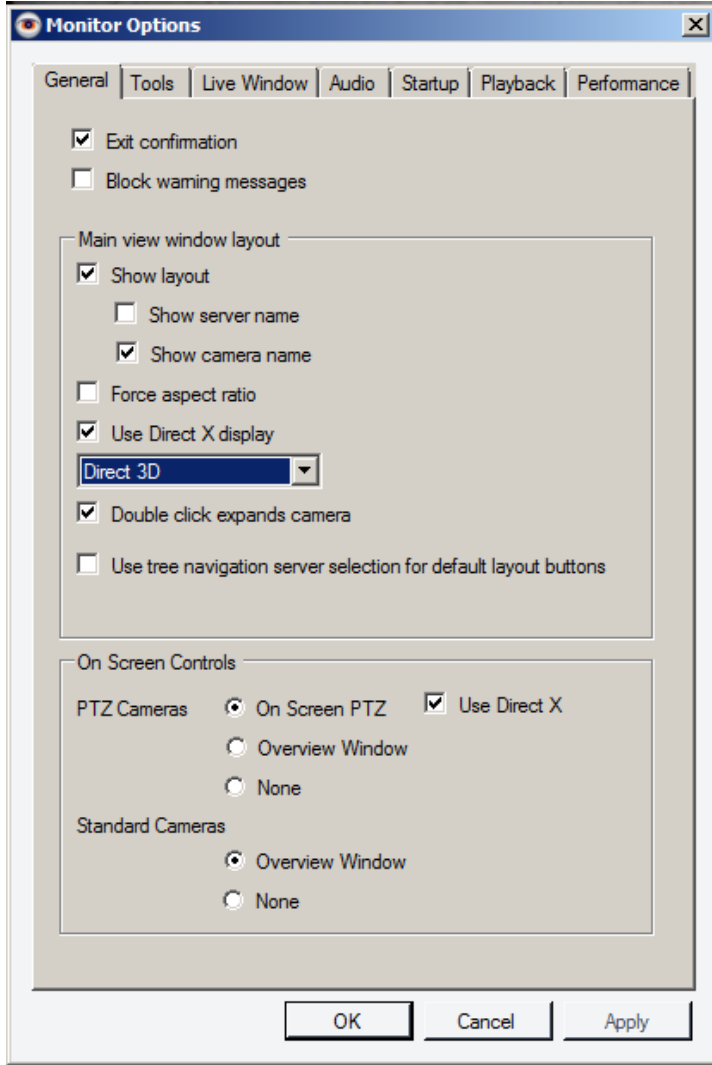


The screenshot shows a dialog box titled "Monitor Station System Login Options". It contains several configuration options:

- Local user mode
- Network user mode
 - Location of data file: [Text Box] [Browse]
 - Database Server
 - [Text Box: 127.0.0.1] [Advanced]
 - Login Server
 - [Text Box] Port [4011]
 - Windows Login
 - Domain [vicorp.videoin sight.net]

We have now added the ability to have a Login Server to access multiple Servers hosted on a single Database. Using the Login Server method allows you to put in the IP address of the first Server added the shared database and connects to all of the Servers on that database. The difference between a Login Server and a Database Server is that the Database Server option is connecting directly to SQL and requires port 1433 to be open. Login Server connects to a specific IP Server and pulls the Server list through port 4011 (or the configured Command Port) instead. This option will give end users another option for managing the server list of the Monitor Station.

Direct X Support Updates



When Using Direct 3D as your Direct X option (under Tools\Options) you will now get the Area of Interest Overlay. We will also automatically detect which DirectX option is the most efficient when Use Direct X is enabled.



Connection Profiles

Connection Profiles

Host Server and Known Connection Profiles

TK Server
Test Server
Public

Add Profile
Remove
Rename

Note: The Host Server updates its Database. One Host Server will update the whole system in a shared DB configuration.

Profile Details

Server Name	IP Address	Command Port	Data Port
	10.10.4.26	4011	4010
Test Server	192.168.2.253	4011	4010
	10.10.5.250	4011	4010
	10.10.5.65	4011	4010

Add Server
Remove
Properties

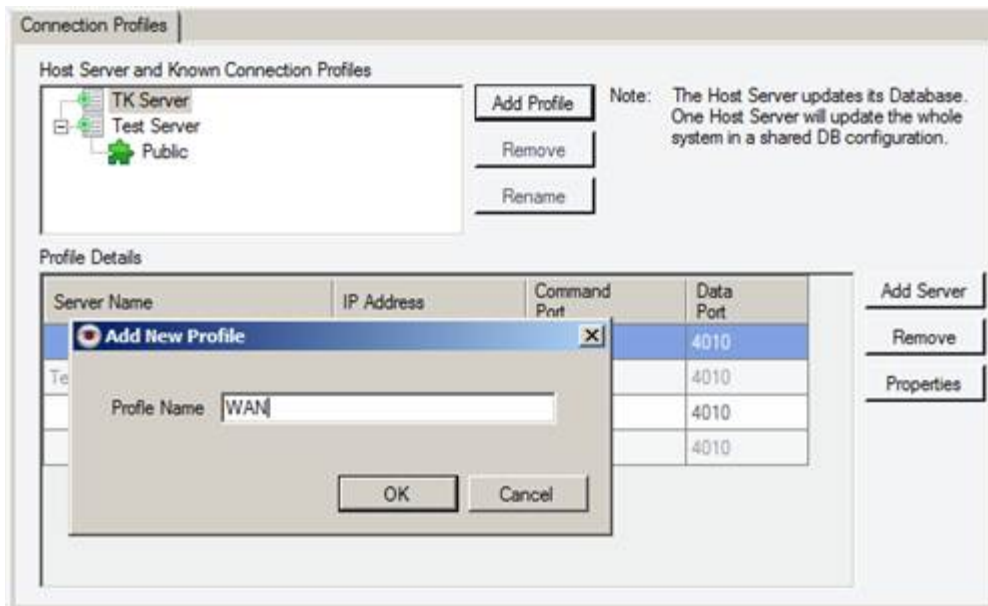
Connection Profiles allows a Video Insight user to configure their system to handle Public IP Addresses. When an IP Address is routed externally the user on the other side of the router uses a different IP address than the internal server. A connection profile can be created to allow the network administrator to enter in the Public IP Address and Port of the internal Video Insight server.

Video Insight Development Team

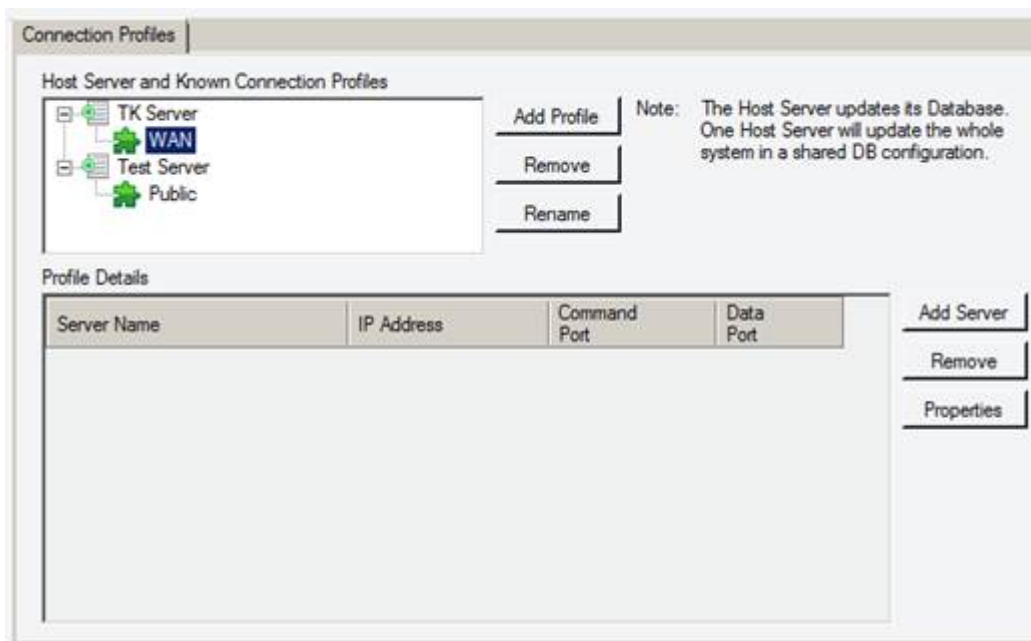
The Connection Profile is used by the Web Client and both iOS and Android version of VI Mobile. The Setup and Configuration was previously done in only in the Web Client, but with the latest version of Video Insight can now be accomplished in the Monitor Station.

The Connection Profiles used by Web Client and iOS VI Mobile has been added to Setup and Configuration in Monitor Station. Host Servers must be running 5.5.12 or better.

To create a new Profile, click Add Profile

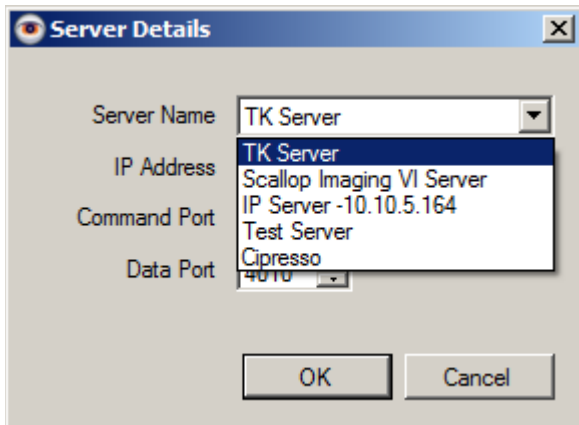


Name the Profile and click OK

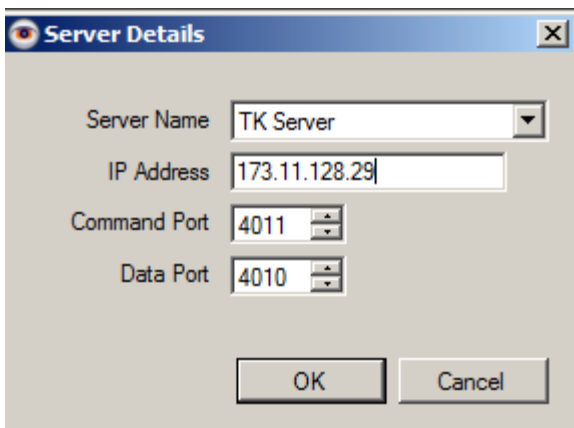


Video Insight Development Team

Once the Profile has been created, select the Profile and then Choose Add Server



Select the Server you want to create the Profile for

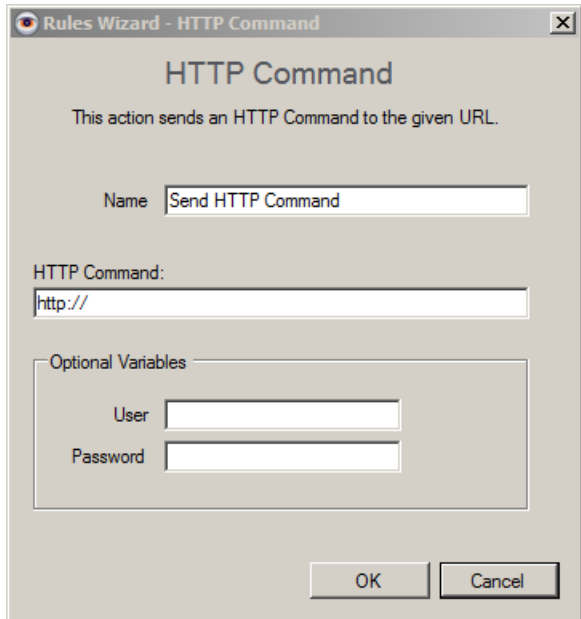


Put in your IP Address and change your Command and Data ports if necessary.



Once finished, the Profile will show up in the Web Client and can be used so that both VI Mobile and the Web Client can have access to live and recorded video externally. The profiles can still be managed through the Web Client; this option allows you to configure multiple locations and databases through one interface instead of logging into each Web Client one at a time.

HTTP Command Rules Action



Using the Rules Manager we can now send HTTP commands to devices or software that accepts HTTP commands. This action can be used to change camera settings, request data dumps, or manipulate software/hardware in miscellaneous ways.

HTTP Listener

The HTTP Listener is currently being utilized by Audio Enhancement and Safe Systems. With the HTTP Listener they are able to send alerts and status updates to Alarms added to the Facility Map.

Camera Integration

New Cameras

Axis P33 Cameras

We have added support for the current generation of P33 dome cameras:

P3353
P3354
P3363
P3363v
P3363ve
P3364
P3364v
P3364ve
P3364lv
P3364lve

These cameras support the following features:

H264, MJPEG Video Capture
Audio Capture (not P335x)
Motion Detection
Show Clock
Set Resolution
Set Compression
Set FPS
Flip
1x DI Capture (not P335x)
1x DO Trigger (not P335x)
Auto-Discovery
WebClient JPEG
Magic Focus

Cisco IPC 2600 Camera Series

We have added support for the following Cisco Cameras:

IPC 2600
IPC 2611
IPC 2621
IPC 2630

These cameras support the following features:

H264, MPEG4 and JPEG Video Capture
Audio Capture
Motion Detection
Show Clock
Set Resolution
Set Compression
Set FPS
Flip
2x DI Capture
2x DO Trigger
WebClient JPEG
Magic Focus

Dahua PTZ Support

We have added support for the following Dahua PTZ Cameras:

SD3282
SD6323
SD6330
SD6336
SD6363
SD6365
SD6366
DS6370
SD6423
SD6430
SD6436
SD6463
SD6465
SD6466
SD6470
SD6580

SD6581
SD6582
SD6583
SD6980
SD6981
SD6982
SD6983

These cameras support the following features:

- H264 and MJPEG Video Capture
- Audio Capture
- Motion Detection
- Set Codec
- Set Compression
- Set FPS
- 1x DI Capture
- Pan/Tilt/Zoom/Focus/Iris
- Preset Set, Recall, Delete
- Auto-Discovery

NOTE:

No WebClient JPEG Support

GKB Generic RTSP Camera

We have added a class that can support GKB cameras under some circumstances.

This class is called "GKB RTSP IP Camera".

This class supports the following features:

- H264, MPEG4, and JPEG Video Capture
- Audio Capture
- Set Resolution
- Set Compression
- Set FPS

This class is missing the following features:

- Authentication
- Motion Detection
- DI Capture
- DO Trigger
- PTZ
- WebClient JPEG
- Auto-Discovery

NOTE:

The camera must have a specific firmware version.
The RTSP and HTTP ports in our software must be configured properly.
See the document [GKB_ToGetVideo.pdf](#)

OnCam Evolution Series

We have added support for the OnCam Evolution series of 360D cameras.

- OnCam Evolution Concealed
- OnCam Evolution ExD
- OnCam Evolution Indoor
- OnCam Evolution Outdoor

These cameras support the following features:

- H264 and MJPEG video capture
- Motion Detection
- Set Codec (requires server restart)
- Set Resolution
- Set Compression
- Set FPS
- 1x DI Capture
- Auto-Discovery

NOTE:

Unlike OnCam's previous series (Halocam), the Evolution Series does not support camera side dewarp. We are working on adding client side dewarp to the Monitor Station for both Halocam and Evolution series cameras and it will be included in a future release.

New Camera Features

Axis Magic Focus

We have added remote focus support to the following Axis cameras:

P1346
P1346e
P1347
P1347e
P3346
P3346v
P3346ve
P3353
P3353
P3363
P3363v
P3363ve
P3364
P3364v
P3364ve
P3364lv
P3364lve
P3367v
P3367ve
P3384
Q1602
Q1602e
Q1604
Q1604e

Mobotix Digital Input Support

We have added support for 1 channel of Digital Input for all Mobotix cameras. For Digital Input to work the camera must have a MX-ExtIO attached to the MxBus port on the camera. We are currently working with Mobotix to add Digital Output in a future release.

Panasonic Motion Zone Support

We added Motion Window support to the following Panasonic Cameras:

WV-SF132
WV-SF135
WV-SP102
WV-SP105
WV-SP508
WV-SP509
WV-SW152
WV-SW155
WV-SW314
WV-SW316
WV-SW558
WV-SW559
WV-SC384
WV-SC386
WV-ST162
WV-ST165
WV-SW172
WV-SW175
WV-SW395
WV-SW396

These cameras support 4 motion windows. Other Panasonics may also support motion windows, if you have a Panasonic that is not on this list and would like Motion Window support for it, let Camera Integrations know and we will add it.

SightLogix VCA Support

We have added complete VCA support for the SightLogix Camera line. All VCA configuration must be done through the SightLogix Sight Monitor software.

