

5.5.18 Release Notes

Overview

5.5.18 is now available for release. In this build we have new additions to the Advidia line, Hi Resolution Association has been made visible, updated the icons for our product, improved the functionality of the Motion Settings Tab, gave all camera manufacturers the ability to support Cameo, added the ability to send custom layouts to Users logged into Monitor Station and made some general bug fixes.

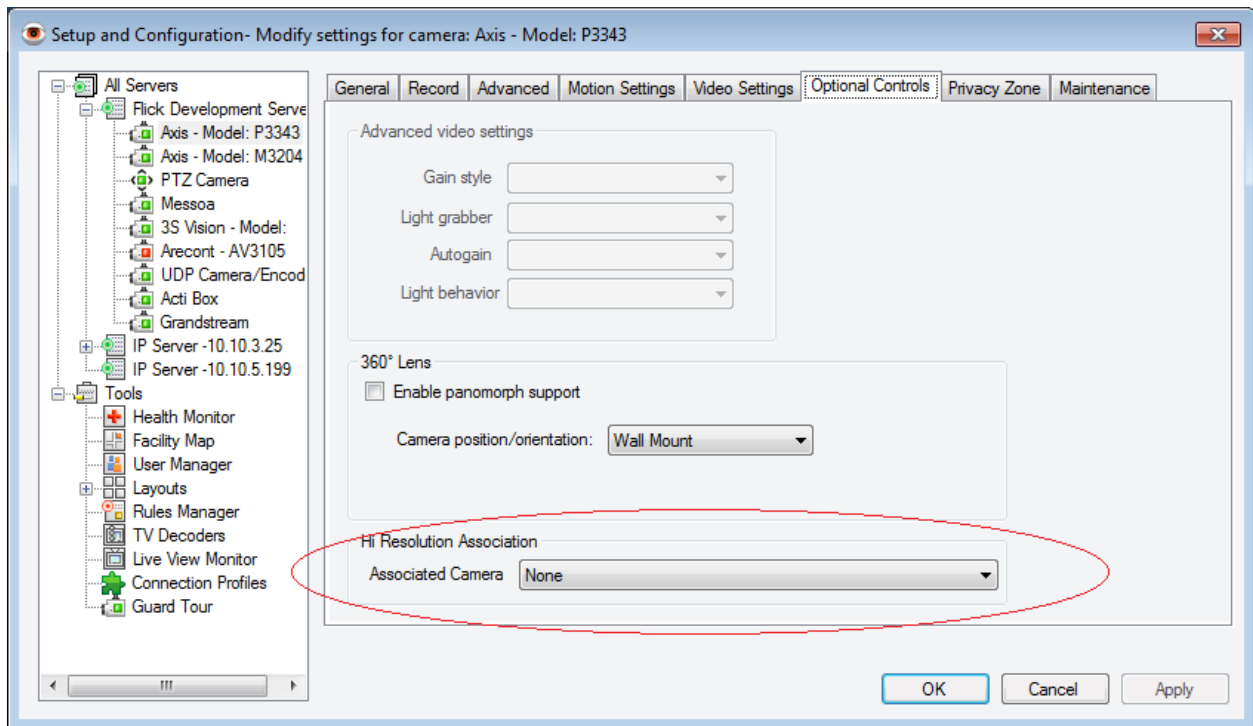
New Features

Cameo Support added for all Manufacturers

Video Insight now has the ability to add multiple streams from the same IP address and not charge an additional license. This feature will allow the End User to add secondary streams in different resolutions, frame rates or compressions as long as the camera supports multiple simultaneous streams. Each manufacturer supports this differently. In most cases you will use the Shared IP Address Camera Number to utilize this feature

Hi Resolution Association

High Resolution Association is now visible without having a Registry Key added to the Monitor Station Registry Folder. This feature will allow End Users to add cameras that support multiple streams to add a low resolution stream for each camera on their Server and then create a layout with those cameras.




When the End User accesses their Server with VI Mobile, Web Client, or Monitor Station from a low bandwidth connection they can pull up the low resolution layout to view all of their cameras. Using High Resolution Association will allow them to select a single camera from that layout and see the higher resolution image.

Motion Settings Tab changes

We have updated the Motion Settings Tab to work better with cameras using Camera Side Motion Detection that have had their zones created prior to Video Insight making a connection to the camera.

General | Record | Advanced | **Motion Settings** | Video Settings | Optional Controls | Privacy Zone | Maintenance



Pause Received Image

Use the camera motion detection whenever possible to reduce the processor load on the server processor.

Server Side Motion Detection

Server Motion Settings

Motion Detection for Entire Image

Event Trigger 5


Sensitivity 85

For Granularity, Motion can be detected by only checking specific zones.

Camera Side Motion Detection

Server Side Motion Detection and Camera Side Motion Detection have been given their own sections.

General | Record | Advanced | **Motion Settings** | Video Settings | Optional Controls | Privacy Zone | Maintenance



Pause Received Image

Use the camera motion detection whenever possible to reduce the processor load on the server processor.

Server Side Motion Detection

Camera Side Motion Detection

Camera Motion Settings

Use Camera Settings

Motion Detection for Entire Image

Event Trigger 5

Sensitivity 85

Min Max

Motion Detection for Specific Zones

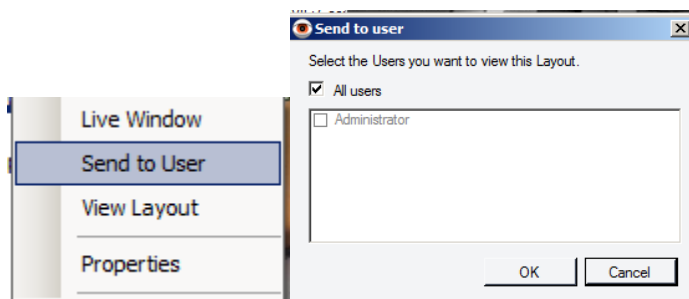
Use Camera Settings will pull the data down from the camera and not change any zones that have been previously made. With Use camera Settings selected you must log into the camera to make any changes to the motion settings of that camera.

Motion Detection for Entire Image will draw one zone over the Entire Image and set the Event Trigger and Sensitivity as long as the camera supports Video Insight writing zones and changes to camera. When the camera does not support this feature, the Event Trigger and Sensitivity will be greyed out.

Motion Detection for Specific Zones will let you draw new zones in the camera through Monitor Station. This feature is camera specific and will be greyed out if the camera does not support zones or have the ability to allow Video Insight to write zones to the camera.

Send Layouts to Users

Right Clicking on a custom layout will now allow you to send that layout to all Users or specific Users logged into Monitor Station. This feature works similarly to the Send camera feature.



Clicking Ok will change the layout view of any user selected to the layout you selected.

Force Users to log back into Monitor Station

When Security is enabled on a Server, Administrators can now open Server Statistics and under the Online Users tab choose Reboot User. This will force the Monitor Station for that user to close and reopen, requiring the User to log back in.

The screenshot displays a web-based configuration interface for a server. At the top, there is a navigation bar with tabs: Server Configuration, Cameras, Advanced, Health Monitor, Client, Access Configuration, and Contact Information. The main content area is divided into several sections:

- Server Identification:** Contains three text input fields: "Server Name" with the value "TK Server", "IP Address" with the value "10.10.4.250", and "Version" with the value "5.5.18.3".
- Database Information:** Contains one text input field: "Sql Server Location" with the value "localhost". Below this field is a button labeled "Advanced".
- Video Storage:** Contains one text input field: "Video data storage path *" with the value "c:\video". Below the field is a note: "* Note: If using a Network Drive, use the UNC path (i.e. \\v4\share\video)".
- Redundant Recordings:** Contains a checked checkbox labeled "Enable Redundant Recordings" and one text input field: "Redundant Path" with the value "C:\Redundant".

Changing the Redundant Path will update the write location, but changing the FPS must be done in the Registry.

New Cameras

Advidia Cameras

A-34

A-35

A-54

These cameras support the following features:

- H264 Video Capture
- Audio Capture
- Motion Detection
- Show Clock
- Set Resolution
- Set Compression
- Set FPS
- 1x DI Capture
- 1x DO Trigger
- Auto-Discovery
- WebClient JPEG

ACTi KCM Cameras

KCM-5511

KCM-5611

KCM-8111

KCM-8211

These cameras support the following features:

- H264, MPEG4, and MJPEG video capture

- Audio Capture

- Motion Detection

- Motion Window

- Set Resolution

- Set Compression

- Set Codec

- Set FPS

- Flip

- 2x DI Capture

- 2x DO Trigger

- Pan/Tilt *8111, 8211 only

- Zoom/Focus

- Magic Focus

- Preset Set/Recall/Delete

- Auto-Discovery

- WebClient JPEG

D-Link Cameras

DCS-931L

DCS-932L

DCS-933L

These cameras support the following features:

- H264 and JPEG Video Capture

- Audio Capture

- Motion Detection

- Set Resolution

- Set Compression

- Set FPS

- Flip

- WebClient JPEG

GeoVision Cameras

GV-SD010

GV-SD200

These cameras support the following features:

- H264, MPEG4, and JPEG Video Capture

- Audio Capture
- Motion Detection
- Show Clock
- Set Compression
- Set FPS
- Flip
- 1x DI Capture
- 1x DO Trigger
- Pan/Tilt/Zoom/Focus/Iris
- Preset Set/Add/Delete
- WebClient JPEG

V-AIR Encoder

This encoder supports the following features:

- H264 Video Capture
- AAC Audio Capture

Panasonic Cameras

- WV-SC588
- WV-SW598
- WV-SF448
- WV-SW158
- WV-SF138

These cameras support the following features:

- H264 and JPEG Video Capture
- Audio Capture
- Motion Detection
- Motion Window Configuration
- Set Resolution
- Set Compression
- Set FPS
- Flip
- ShowClock
- 3x DI Capture
- 1x DO Trigger
- Pan/Tilt/Zoom/Focus/Iris
- Preset Set, Add, Delete
- Auto-Discovery
- WebClient JPEG

Sony E Series Cameras

- SNC-EB600
- SNC-EB630
- SNC-EM600
- SNC-EM601
- SNC-EM602

SNC-EM630

SNC-EM631

SNC-EM632

These cameras support the following features:

- H264, JPEG Video Capture

- Audio Capture

- Motion Detection

- Set Codec

- Set Resolution

- Set Compression

- Set FPS

- Flip

- WebClient JPEG

- Auto-Discovery

- Magic Focus

Sony V Series Cameras

SNC-VB600

SNC-VB630

SNC-VM600,

SNC-VM601,

SNC-VM602

SNC-VM630,

SNC-VM631,

SNC-VM632

These cameras support the following features:

- H264, JPEG Video Capture

- Audio Capture

- Motion Detection

- Set Codec

- Set Resolution

- Set Compression

- Set FPS

- Flip

- 2xDI Capture

- 2xDO Trigger

- WebClient JPEG

- Auto-Discovery

- Magic Focus

Other Camera Changes

Dahua Channel Increase

We now support 64 channels for Dahua, up from the original 4. Channels 1-32 will select the primary stream for channel. Channels 33-64 will select the secondary stream for each channel. This was done so that we can get the RTSP stream from Dahua Encoders over 4 channels and capture live streams from Dahua NVR's

Audio Support for Messoa NIC-900

The Messoa NIC-900 was added in previous revisions of the software. We have updated this support to include live and recorded audio, which was not an available feature at the time of the original integration.

Audio Support for Toshiba IKW-P41A

The Toshiba IKW-P41A was added in previous revisions of the software. We have updated this support to include live and recorded audio, which was not an available feature at the time of the original integration.

Dlink to D-Link

At the request of D-Link we have changed all visible references to D-Link to from D-Link. This will not cause any backwards compatibility issues.